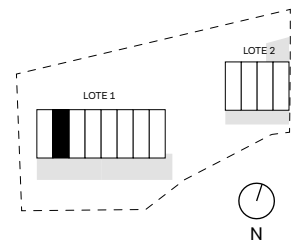


# Casas de Sal

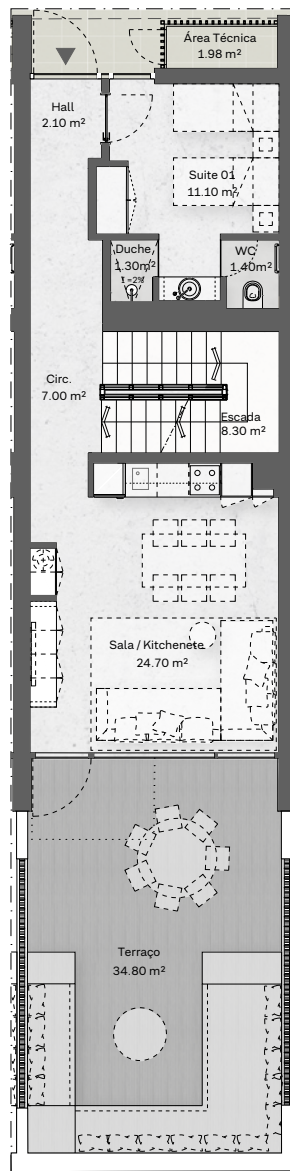
FUSETA PORTUGAL



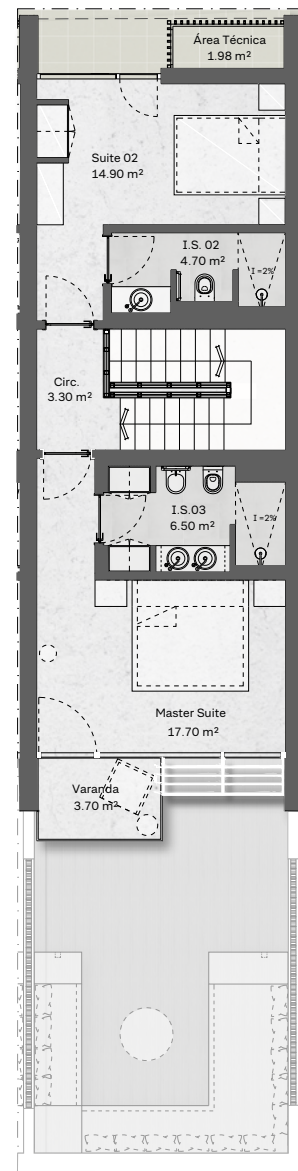
<p>Lote 1 <b>CASA B</b></p>	<p>Lote 1: fracções B, C, D, E, F, G, H</p>	<p>Área Bruta Privativa: 175,11 m<sup>2</sup> (Piso -1 = 43,11 m<sup>2</sup>   Piso 0 = 66 m<sup>2</sup>   Piso 1 = 66 m<sup>2</sup>)                  Área Bruta Dependente: 28,53 m<sup>2</sup>                  Áreas Exteriores Privativas: 57,50 m<sup>2</sup></p>
---------------------------------	---	---



PISO -1



PISO 0



PISO 1