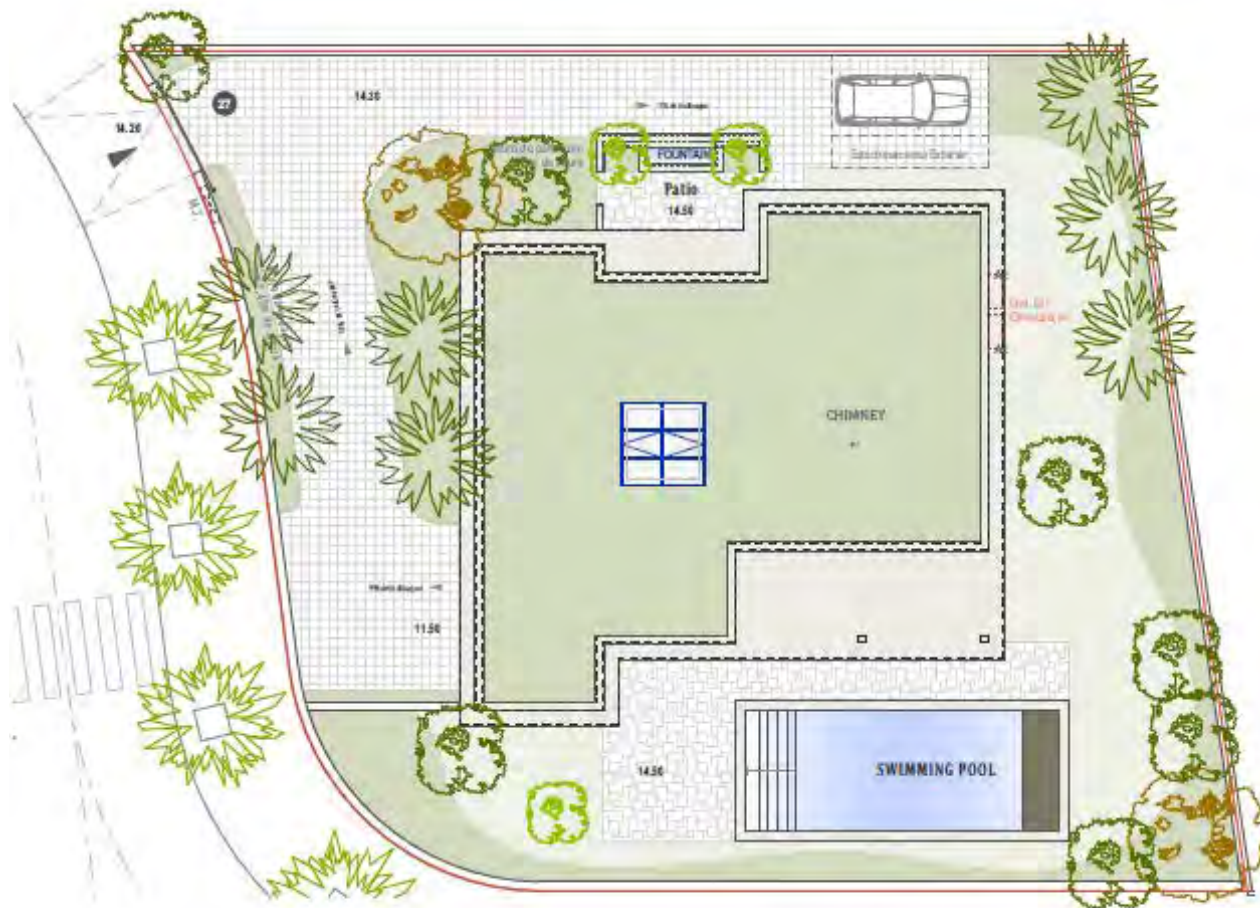




QUINTA DE FARO
PRIVATE LUXURY VILLAS
ALGARVE



Kitchen equipment is not contractual. Their position is indicative. Dimensions and areas are given subject to technical construction and execution requirements. The fallout from false ceilings, soffits and pipes are not systematically shown. The thickness of the insulation will be determined by the technical execution study and therefore the data in this plan are only indicative.

Co-Developer :

MJ Développement
55 Avenue d'Espagne
64600 ANGLET - FRANCE
Tel: +33 5 59 03 13 00

MJ DÉVELOPPEMENT
PROMOTEUR CONSTRUCTEUR

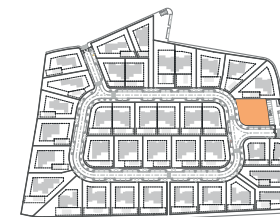
Serip Groupe
2, avenue de la Liberté
83120 Sainte-Maxime - FRANCE


SERIP GROUPE

SALES PLAN

VILLA N°18 DOUBLE STOREY

SITE PLAN



TOTAL INTERIOR LIVING AREA 325.9 m²

GROUND FLOOR 159.9 m²

Living	39.7 m ²
Dining room	16.6 m ²
Kitchen	13.7 m ²
Office	5.9 m ²
Storeroom	4.8 m ²
Ensuite Bedroom 1	21 m ²
Ensuite Bedroom 2	20 m ²
Dressing Ensuite Bedroom 2	3 m ²
Ensuite Bedroom 3	24.7 m ²
Dressing Ensuite Bedroom 3	3.4 m ²
Guest toilet	1.9 m ²
Lobby, Hallway	5.2 m ²

BASEMENT 166 m²

Hallway	16.6 m ²
Ensuite Bedroom 4	19.4 m ²
Laundry	8.8 m ²
Gym, Hammam	37 m ²
Wine Cellar	12.9 m ²
Garage	71.3 m ²
Technical room swim Pool	8.8 m ²

TOTAL EXTERIOR AREA 85.9 m²

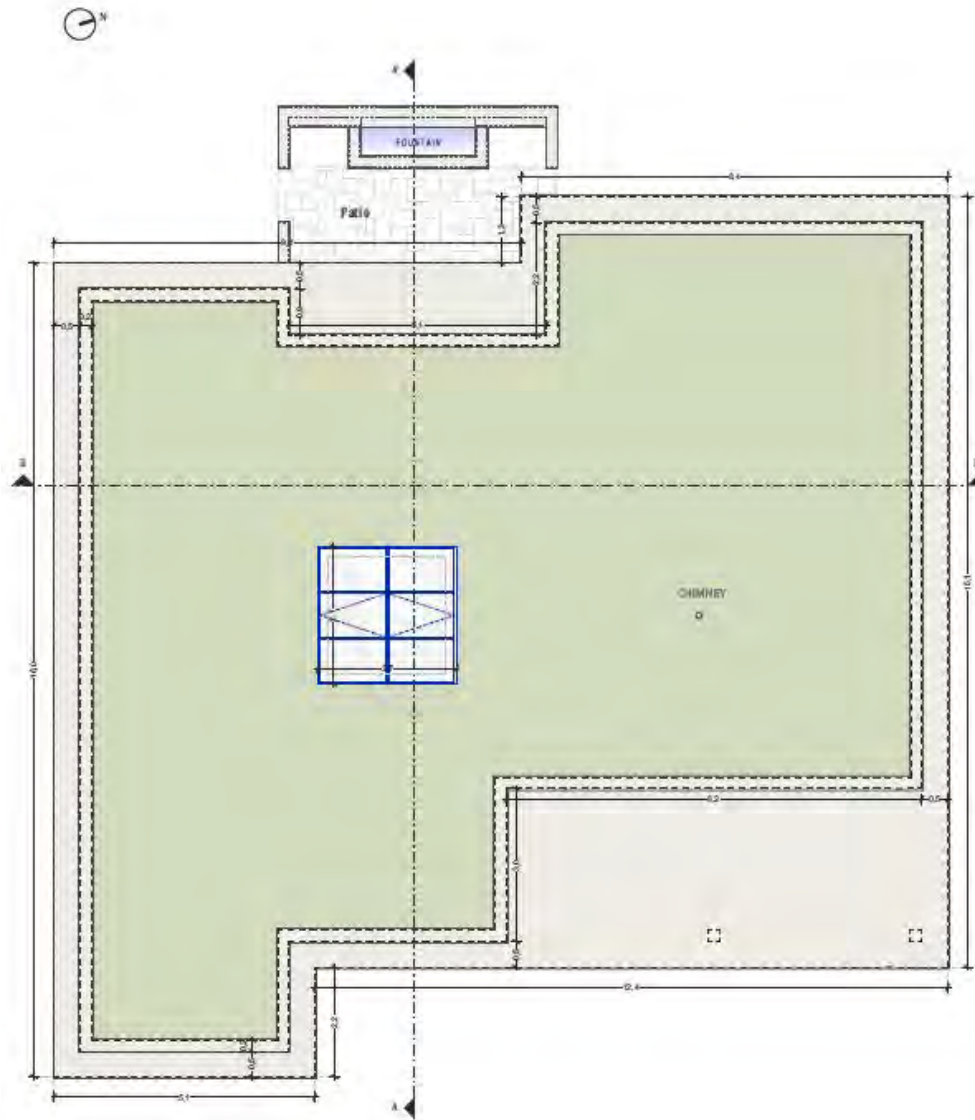
Patio/Fountain	20.8 m ²
Covered terrace	24.3 m ²
Pool Deck	4.8 m ²
Swimming pool	36 m ²

TOTAL AREA 411.8 m²

Plot of Land	803.5 m ²
Altimetry	14.5



QUINTA DE FARO
PRIVATE LUXURY VILLAS
ALGARVE



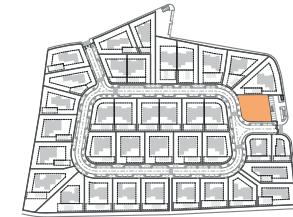
Roof Plan

Kitchen equipment is not contractual. Their position is indicative. Dimensions and areas are given subject to technical construction and execution requirements. The fallout from false ceilings, soffits and pipes are not systematically shown. The thickness of the insulation will be determined by the technical execution study and therefore the data in this plan are only indicative.

SALES PLAN

VILLA N°18 DOUBLE STOREY

FLOOR COVERING PLAN



TOTAL INTERIOR LIVING AREA 325.9 m²

GROUND FLOOR 159.9 m²

Living	39.7 m ²
Dining room	16.6 m ²
Kitchen	13.7 m ²
Office	5.9 m ²
Storeroom	4.8 m ²
Ensuite Bedroom 1	21 m ²
Ensuite Bedroom 2	20 m ²
Dressing Ensuite Bedroom 2	3 m ²
Ensuite Bedroom 3	24.7 m ²
Dressing Ensuite Bedroom 3	3.4 m ²
Guest toilet	1.9 m ²
Lobby, Hallway	5.2 m ²

BASEMENT 166 m²

Hallway	16.6 m ²
Ensuite Bedroom 4	19.4 m ²
Laundry	8.8 m ²
Gym, Hammam	37 m ²
Wine Cellar	12.9 m ²
Garage	71.3 m ²
Technical room swim Pool	8.8 m ²

TOTAL EXTERIOR AREA 85.9 m²

Patio/Fountain	20.8 m ²
Covered terrace	24.3 m ²
Pool Deck	4.8 m ²
Swimming pool	36 m ²

TOTAL AREA 411.8 m²

Plot of Land	803.5 m ²
Altimetry	14.5

MJ Développement
55 Avenue d'Espagne
64600 ANGLÈT - FRANCE
Tel: +33 5 59 03 13 00

MJ DÉVELOPPEMENT
PROMOTEUR CONSTRUCTEUR

Serip Groupe
2, avenue de la Liberté
83120 Sainte-Maxime - FRANCE


SERIP GROUPE



QUINTA DE FARO
PRIVATE LUXURY VILLAS
ALGARVE



Ground floor plan

Kitchen equipment is not contractual. Their position is indicative. Dimensions and areas are given subject to technical construction and execution requirements. The fallout from false ceilings, soffits and pipes are not systematically shown. The thickness of the insulation will be determined by the technical execution study and therefore the data in this plan are only indicative.

MJ Développement
55 Avenue d'Espagne
64600 ANGLÈT - FRANCE
Tel: +33 5 59 03 13 00

MJ DÉVELOPPEMENT
PROMOTEUR CONSTRUCTEUR

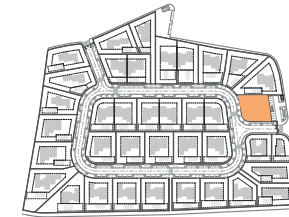
Serip Groupe
2, avenue de la Liberté
83120 Sainte-Maxime - FRANCE


SERIP GROUPE

SALES PLAN

VILLA N°18 DOUBLE STOREY

GROUND FLOOR



TOTAL INTERIOR LIVING AREA 325.9 m²

GROUND FLOOR 159.9 m²

Living	39.7 m ²
Dining room	16.6 m ²
Kitchen	13.7 m ²
Office	5.9 m ²
Storer room	4.8 m ²
Ensuite Bedroom 1	21 m ²
Ensuite Bedroom 2	20 m ²
Dressing Ensuite Bedroom 2	3 m ²
Ensuite Bedroom 3	24.7 m ²
Dressing Ensuite Bedroom 3	3.4 m ²
Guest toilet	1.9 m ²
Lobby, Hallway	5.2 m ²

BASEMENT 166 m²

Hallway	16.6 m ²
Ensuite Bedroom 4	19.4 m ²
Laundry	8.8 m ²
Gym, Hammam	37 m ²
Wine Cellar	12.9 m ²
Garage	71.3 m ²
Technical room swim Pool	8.8 m ²

TOTAL EXTERIOR AREA 85.9 m²

Patio/Fountain	20.8 m ²
Covered terrace	24.3 m ²
Pool Deck	4.8 m ²
Swimming pool	36 m ²

TOTAL AREA 411.8 m²

Plot of Land	803.5 m ²
Altimetry	14.5



QUINTA DE FARO
PRIVATE LUXURY VILLAS
ALGARVE



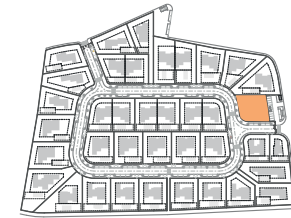
Basement plan

Kitchen equipment is not contractual. Their position is indicative. Dimensions and areas are given subject to technical construction and execution requirements. The fallout from false ceilings, soffits and pipes are not systematically shown. The thickness of the insulation will be determined by the technical execution study and therefore the data in this plan are only indicative.

SALES PLAN

VILLA N°18 DOUBLE STOREY

BASEMENT



TOTAL INTERIOR LIVING AREA 325.9 m²

GROUND FLOOR 159.9 m²

Living	39.7 m ²
Dining room	16.6 m ²
Kitchen	13.7 m ²
Office	5.9 m ²
Storeroom	4.8 m ²
Ensuite Bedroom 1	21 m ²
Ensuite Bedroom 2	20 m ²
Dressing Ensuite Bedroom 2	3 m ²
Ensuite Bedroom 3	24.7 m ²
Dressing Ensuite Bedroom 3	3.4 m ²
Guest toilet	1.9 m ²
Lobby, Hallway	5.2 m ²

BASEMENT 166 m²

Hallway	16.6 m ²
Ensuite Bedroom 4	19.4 m ²
Laundry	8.8 m ²
Gym, Hammam	37 m ²
Wine Cellar	12.9 m ²
Garage	71.3 m ²
Technical room swim Pool	8.8 m ²

TOTAL EXTERIOR AREA 85.9 m²

Patio/Fountain	20.8 m ²
Covered terrace	24.3 m ²
Pool Deck	4.8 m ²
Swimming pool	36 m ²

TOTAL AREA 411.8 m²

Plot of Land	803.5 m ²
Altimetry	14.5

MJ Développement
55 Avenue d'Espagne
64600 ANGLÈT - FRANCE
Tel: +33 5 59 03 13 00

MJ DÉVELOPPEMENT
PROMOTEUR CONSTRUCTEUR

Serip Groupe
2, avenue de la Liberté
83120 Sainte-Maxime - FRANCE


SERIP GROUPE



QUINTA DE FARO
PRIVATE LUXURY VILLAS
ALGARVE



Cut AA'



Cut BB'



Cut Patio

Kitchen equipment is not contractual. Their position is indicative. Dimensions and areas are given subject to technical construction and execution requirements. The fallout from false ceilings, soffits and pipes are not systematically shown. The thickness of the insulation will be determined by the technical execution study and therefore the data in this plan are only indicative.

MJ Développement
55 Avenue d'Espagne
64600 ANGLÈT - FRANCE
Tel: +33 5 59 03 13 00

MJ DÉVELOPPEMENT
PROMOTEUR CONSTRUCTEUR

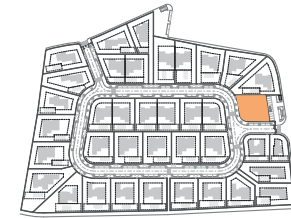
Serip Groupe
2, avenue de la Liberté
83120 Sainte-Maxime - FRANCE


SERIP GROUPE

SALES PLAN

VILLA N°18 DOUBLE STOREY

SECTIONAL PLAN



TOTAL INTERIOR LIVING AREA 325.9 m²

GROUND FLOOR 159.9 m²

Living	39.7 m ²
Dining room	16.6 m ²
Kitchen	13.7 m ²
Office	5.9 m ²
Storeroom	4.8 m ²
Ensuite Bedroom 1	21 m ²
Ensuite Bedroom 2	20 m ²
Dressing Ensuite Bedroom 2	3 m ²
Ensuite Bedroom 3	24.7 m ²
Dressing Ensuite Bedroom 3	3.4 m ²
Guest toilet	1.9 m ²
Lobby, Hallway	5.2 m ²

BASEMENT 166 m²

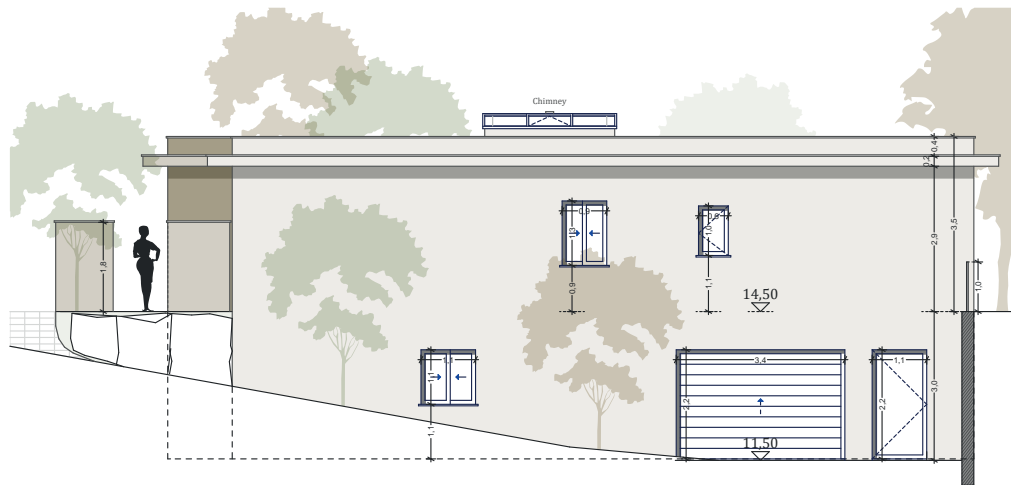
Hallway	16.6 m ²
Ensuite Bedroom 4	19.4 m ²
Laundry	8.8 m ²
Gym, Hammam	37 m ²
Wine Cellar	12.9 m ²
Garage	71.3 m ²
Technical room swim Pool	8.8 m ²

TOTAL EXTERIOR AREA 85.9 m²

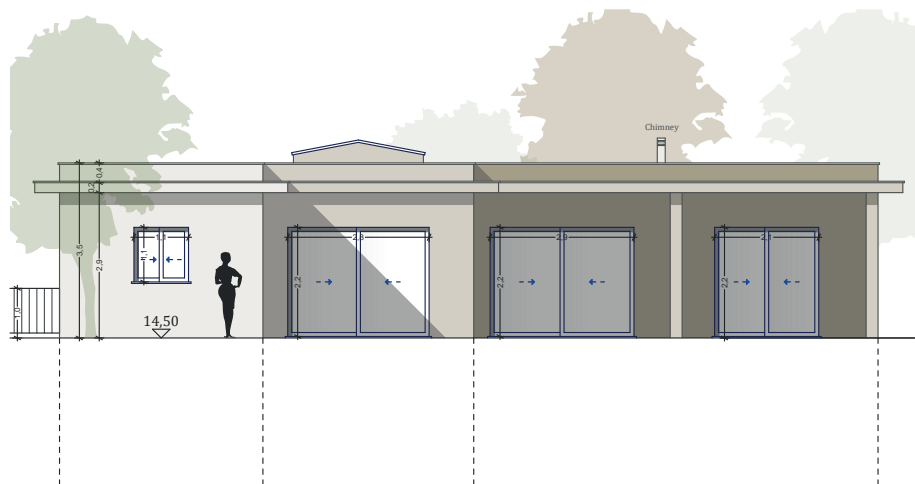
Patio/Fountain	20.8 m ²
Covered terrace	24.3 m ²
Pool Deck	4.8 m ²
Swimming pool	36 m ²

TOTAL AREA 411.8 m²

Plot of Land	803.5 m ²
Altimetry	14.5



South elevation



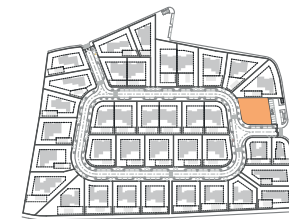
East elevation

Kitchen equipment is not contractual. Their position is indicative. Dimensions and areas are given subject to technical construction and execution requirements. The fallout from false ceilings, soffits and pipes are not systematically shown. The thickness of the insulation will be determined by the technical execution study and therefore the data in this plan are only indicative.

SALES PLAN

VILLA N°18 DOUBLE STOREY

ELEVATIONS



TOTAL INTERIOR LIVING AREA 325.9 m²

GROUND FLOOR 159.9 m²

Living	39.7 m ²
Dining room	16.6 m ²
Kitchen	13.7 m ²
Office	5.9 m ²
Storeroom	4.8 m ²
Ensuite Bedroom 1	21 m ²
Ensuite Bedroom 2	20 m ²
Dressing Ensuite Bedroom 2	3 m ²
Ensuite Bedroom 3	24.7 m ²
Dressing Ensuite Bedroom 3	3.4 m ²
Guest toilet	1.9 m ²
Lobby, Hallway	5.2 m ²

BASEMENT 166 m²

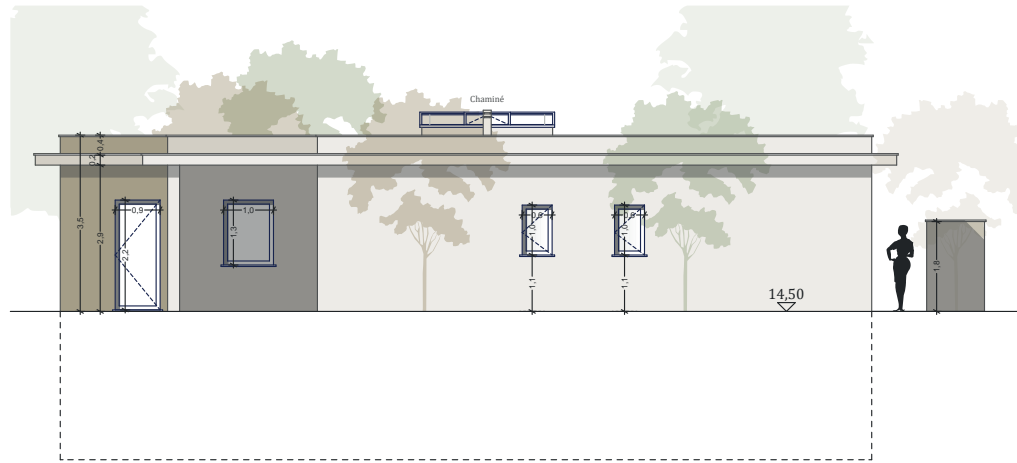
Hallway	16.6 m ²
Ensuite Bedroom 4	19.4 m ²
Laundry	8.8 m ²
Gym, Hammam	37 m ²
Wine Cellar	12.9 m ²
Garage	71.3 m ²
Technical room swim Pool	8.8 m ²

TOTAL EXTERIOR AREA 85.9 m²

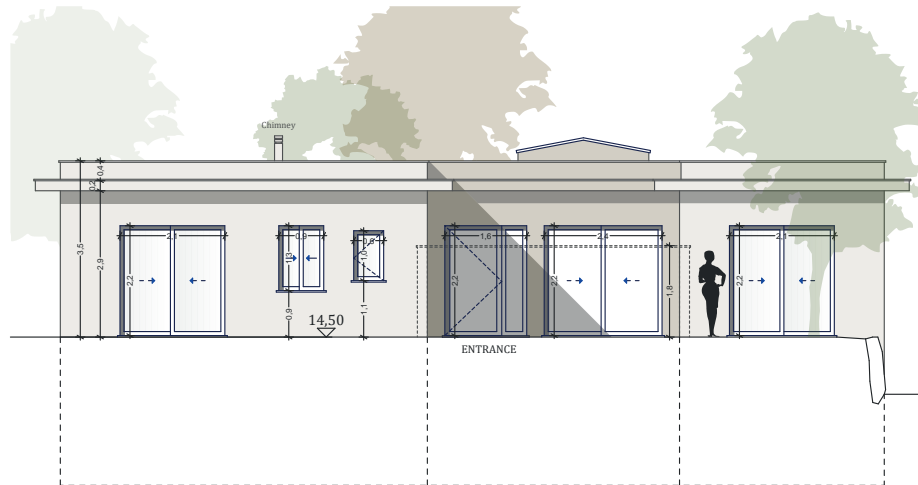
Patio/Fountain	20.8 m ²
Covered terrace	24.3 m ²
Pool Deck	4.8 m ²
Swimming pool	36 m ²

TOTAL AREA 411.8 m²

Plot of Land	803.5 m ²
Altimetry	14.5



North elevation



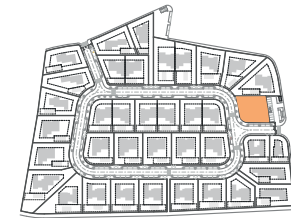
West elevation

Kitchen equipment is not contractual. Their position is indicative. Dimensions and areas are given subject to technical construction and execution requirements. The fallout from false ceilings, soffits and pipes are not systematically shown. The thickness of the insulation will be determined by the technical execution study and therefore the data in this plan are only indicative.

SALES PLAN

VILLA N°18 DOUBLE STOREY

ELEVATIONS



TOTAL INTERIOR LIVING AREA 325.9 m²

GROUND FLOOR 159.9 m²

Living	39.7 m ²
Dining room	16.6 m ²
Kitchen	13.7 m ²
Office	5.9 m ²
Storeroom	4.8 m ²
Ensuite Bedroom 1	21 m ²
Ensuite Bedroom 2	20 m ²
Dressing Ensuite Bedroom 2	3 m ²
Ensuite Bedroom 3	24.7 m ²
Dressing Ensuite Bedroom 3	3.4 m ²
Guest toilet	1.9 m ²
Lobby, Hallway	5.2 m ²

BASEMENT 166 m²

Hallway	16.6 m ²
Ensuite Bedroom 4	19.4 m ²
Laundry	8.8 m ²
Gym, Hammam	37 m ²
Wine Cellar	12.9 m ²
Garage	71.3 m ²
Technical room swim Pool	8.8 m ²

TOTAL EXTERIOR AREA 85.9 m²

Patio/Fountain	20.8 m ²
Covered terrace	24.3 m ²
Pool Deck	4.8 m ²
Swimming pool	36 m ²

TOTAL AREA 411.8 m²

Plot of Land	803.5 m ²
Altimetry	14.5