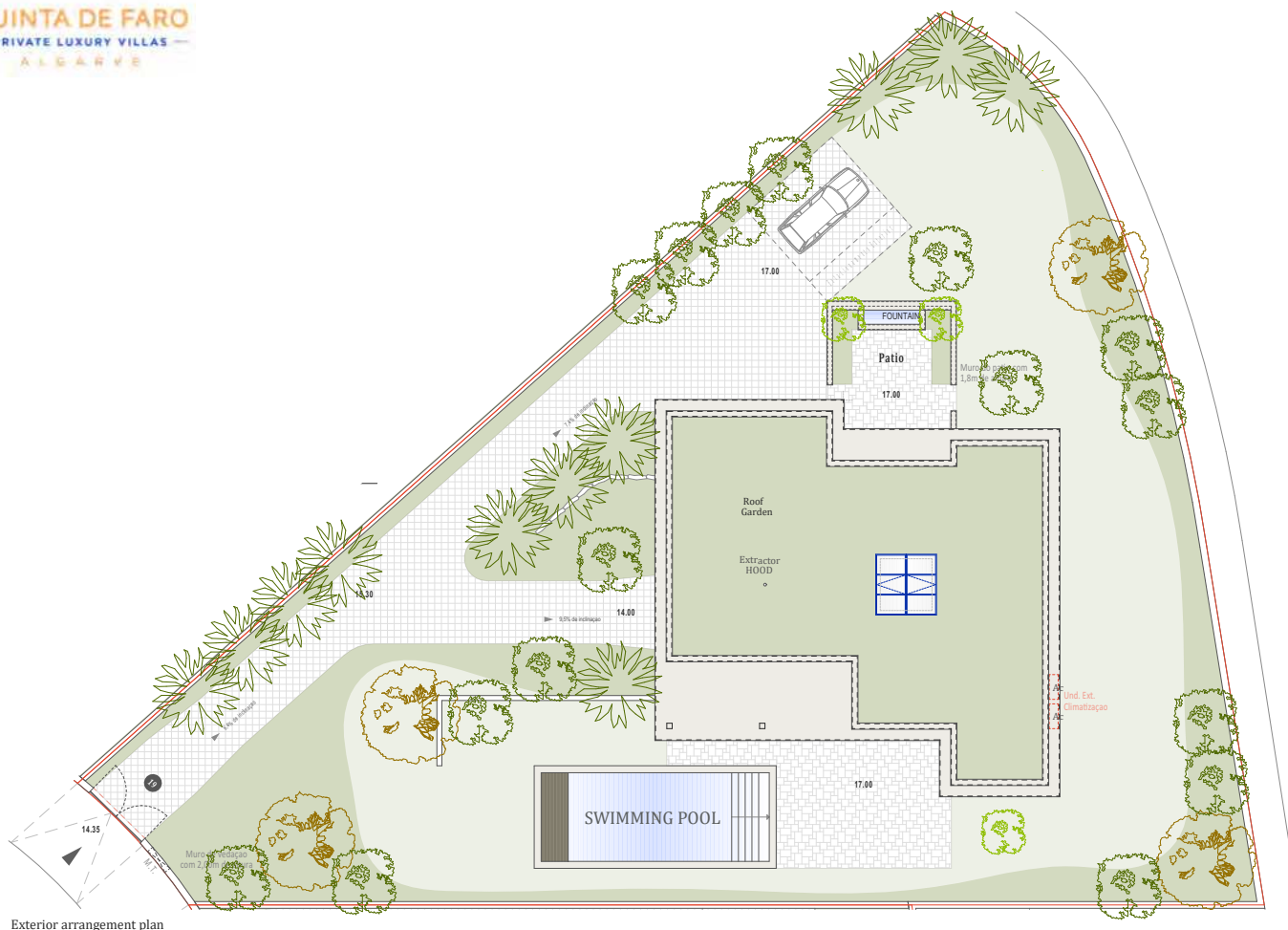




QUINTA DE FARO
PRIVATE LUXURY VILLAS
ALGARVE



Kitchen equipment is not contractual. Their position is indicative. Dimensions and areas are given subject to technical construction and execution requirements. The fallout from false ceilings, soffits and pipes are not systematically shown. The thickness of the insulation will be determined by the technical execution study and therefore the data in this plan are only indicative.

Co-Developer :

MJ Développement
55 Avenue d'Espagne
64600 ANGLÈT - FRANCE
Tel: +33 5 59 03 13 00

MJ DÉVELOPPEMENT
PROMOTEUR CONSTRUCTEUR

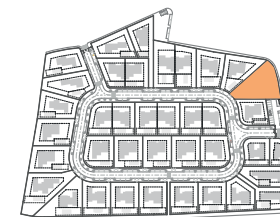
Serip Groupe
2, avenue de la Liberté
83120 Sainte-Maxime - FRANCE


SERIP GROUPE

SALES PLAN

VILLA N°19 DOUBLE STOREY

SITE PLAN



TOTAL INTERIOR LIVING AREA 328.8 m²

GROUND FLOOR 167 m²

Living	40.9 m ²
Dining room	17.7 m ²
Kitchen	14.4 m ²
Office	6.2 m ²
Storeroom	5.1 m ²
Ensuite Bedroom 1	21.2 m ²
Ensuite Bedroom 2	20 m ²
Dressing Ensuite Bedroom 2	3 m ²
Ensuite Bedroom 3	26.7 m ²
Dressing Ensuite Bedroom 3	4.4 m ²
Guest toilet	1.9 m ²
Lobby, Hallway	5.5 m ²

BASEMENT 161.8 m²

Hallway	17.2 m ²
Ensuite Bedroom 4	17.7 m ²
Laundry	6.9 m ²
Gym, Hammam	21.6 m ²
Wine Cellar	10.2 m ²
Garage	88.2 m ²
Technical room swim Pool	20.9 m ²

TOTAL EXTERIOR AREA 101.1 m²

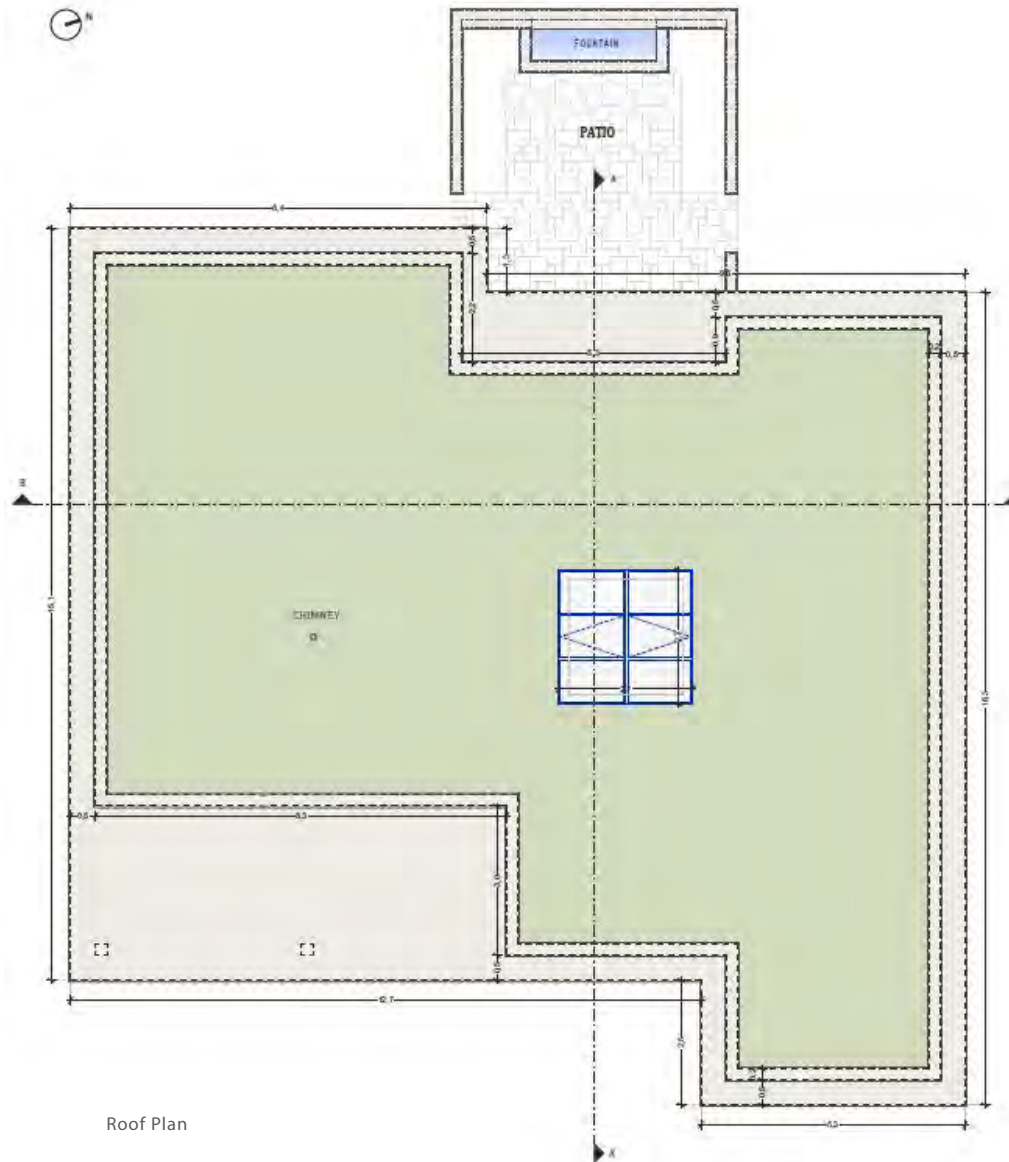
Patio/Fountain	35.7 m ²
Covered terrace	24.6 m ²
Pool Deck	4.8 m ²
Swimming pool	36 m ²

TOTAL AREA 429.9 m²

Plot of Land	1250.8 m ²
Altimetry	17



QUINTA DE FARO
PRIVATE LUXURY VILLAS
ALGARVE



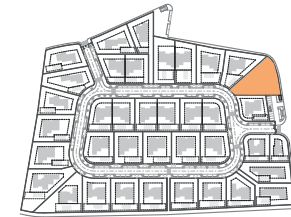
Roof Plan

Kitchen equipment is not contractual. Their position is indicative. Dimensions and areas are given subject to technical construction and execution requirements. The fallout from false ceilings, soffits and pipes are not systematically shown. The thickness of the insulation will be determined by the technical execution study and therefore the data in this plan are only indicative.

SALES PLAN

VILLA N°19 DOUBLE STOREY

FLOOR COVERING PLAN



TOTAL INTERIOR LIVING AREA 328.8 m²

GROUND FLOOR 167 m²

Living	40.9 m ²
Dining room	17.7 m ²
Kitchen	14.4 m ²
Office	6.2 m ²
Storeroom	5.1 m ²
Ensuite Bedroom 1	21.2 m ²
Ensuite Bedroom 2	20 m ²
Dressing Ensuite Bedroom 2	3 m ²
Ensuite Bedroom 3	26.7 m ²
Dressing Ensuite Bedroom 3	4.4 m ²
Guest toilet	1.9 m ²
Lobby, Hallway	5.5 m ²

BASEMENT 161.8 m²

Hallway	17.2 m ²
Ensuite Bedroom 4	17.7 m ²
Laundry	6.9 m ²
Gym, Hammam	21.6 m ²
Wine Cellar	10.2 m ²
Garage	88.2 m ²
Technical room swim Pool	20.9 m ²

TOTAL EXTERIOR AREA 101.1 m²

Patio/Fountain	35.7 m ²
Covered terrace	24.6 m ²
Pool Deck	4.8 m ²
Swimming pool	36 m ²

TOTAL AREA 429.9 m²

Plot of Land	1250.8 m ²
Altimetry	17

MJ Développement
55 Avenue d'Espagne
64600 ANGLET - FRANCE
Tel: +33 5 59 03 13 00

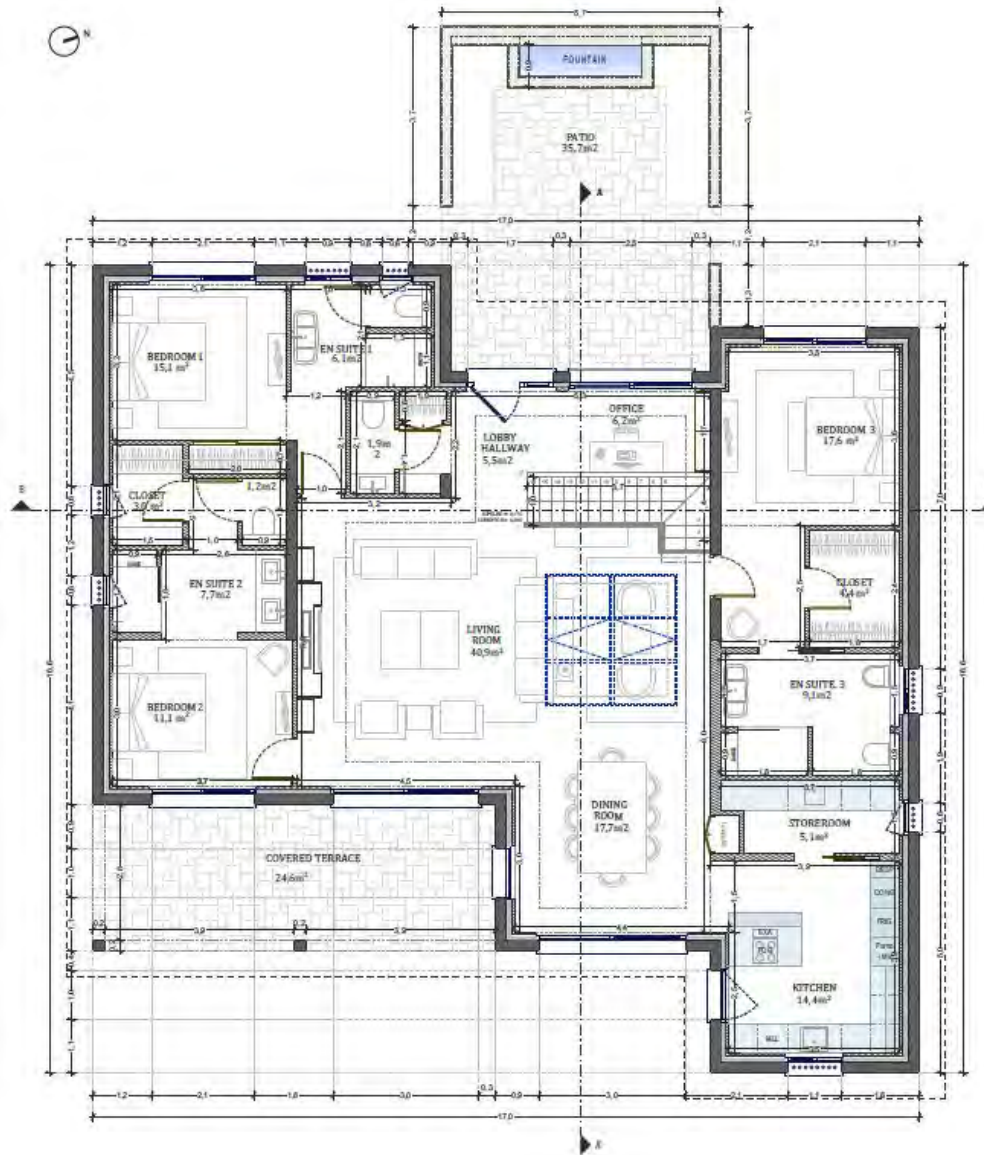
MJ DÉVELOPPEMENT
PROMOTEUR CONSTRUCTEUR

Serip Groupe
2, avenue de la Liberté
83120 Sainte-Maxime - FRANCE


SERIP GROUPE



QUINTA DE FARO
PRIVATE LUXURY VILLAS
ALGARVE



Ground floor plan

Kitchen equipment is not contractual. Their position is indicative. Dimensions and areas are given subject to technical construction and execution requirements. The fallout from false ceilings, soffits and pipes are not systematically shown. The thickness of the insulation will be determined by the technical execution study and therefore the data in this plan are only indicative.

MJ Développement
55 Avenue d'Espagne
64600 ANGLÈT - FRANCE
Tel: +33 5 59 03 13 00

MJ DÉVELOPPEMENT
PROMOTEUR CONSTRUCTEUR

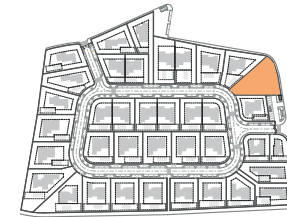
Serip Groupe
2, avenue de la Liberté
83120 Sainte-Maxime - FRANCE


SERIP GROUPE

SALES PLAN

VILLA N°19 DOUBLE STOREY

GROUND FLOOR



TOTAL INTERIOR LIVING AREA 328.8 m²

GROUND FLOOR 167 m²

Living	40.9 m ²
Dining room	17.7 m ²
Kitchen	14.4 m ²
Office	6.2 m ²
Storer room	5.1 m ²
Ensuite Bedroom 1	21.2 m ²
Ensuite Bedroom 2	20 m ²
Dressing Ensuite Bedroom 2	3 m ²
Ensuite Bedroom 3	26.7 m ²
Dressing Ensuite Bedroom 3	4.4 m ²
Guest toilet	1.9 m ²
Lobby, Hallway	5.5 m ²

BASEMENT 161.8 m²

Hallway	17.2 m ²
Ensuite Bedroom 4	17.7 m ²
Laundry	6.9 m ²
Gym, Hammam	21.6 m ²
Wine Cellar	10.2 m ²
Garage	88.2 m ²
Technical room swim Pool	20.9 m ²

TOTAL EXTERIOR AREA 101.1 m²

Patio/Fountain	35.7 m ²
Covered terrace	24.6 m ²
Pool Deck	4.8 m ²
Swimming pool	36 m ²

TOTAL AREA 429.9 m²

Plot of Land	1250.8 m ²
Altimetry	17



QUINTA DE FARO
PRIVATE LUXURY VILLAS
ALGARVE



Basement Plan

Kitchen equipment is not contractual. Their position is indicative. Dimensions and areas are given subject to technical construction and execution requirements. The fallout from false ceilings, soffits and pipes are not systematically shown. The thickness of the insulation will be determined by the technical execution study and therefore the data in this plan are only indicative.

MJ Développement
55 Avenue d'Espagne
64600 ANGLÈT - FRANCE
Tel: +33 5 59 03 13 00

MJ DÉVELOPPEMENT
PROMOTEUR CONSTRUCTEUR

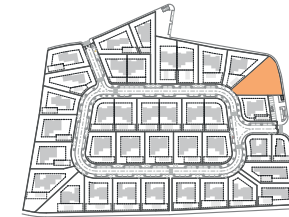
Serip Groupe
2, avenue de la Liberté
83120 Sainte-Maxime - FRANCE


SERIP GROUPE

SALES PLAN

VILLA N°19 DOUBLE STOREY

BASEMENT



TOTAL INTERIOR LIVING AREA 328.8 m²

GROUND FLOOR 167 m²

Living	40.9 m ²
Dining room	17.7 m ²
Kitchen	14.4 m ²
Office	6.2 m ²
Storeroom	5.1 m ²
Ensuite Bedroom 1	21.2 m ²
Ensuite Bedroom 2	20 m ²
Dressing Ensuite Bedroom 2	3 m ²
Ensuite Bedroom 3	26.7 m ²
Dressing Ensuite Bedroom 3	4.4 m ²
Guest toilet	1.9 m ²
Lobby, Hallway	5.5 m ²

BASEMENT 161.8 m²

Hallway	17.2 m ²
Ensuite Bedroom 4	17.7 m ²
Laundry	6.9 m ²
Gym, Hammam	21.6 m ²
Wine Cellar	10.2 m ²
Garage	88.2 m ²
Technical room swim Pool	20.9 m ²

TOTAL EXTERIOR AREA 101.1 m²

Patio/Fountain	35.7 m ²
Covered terrace	24.6 m ²
Pool Deck	4.8 m ²
Swimming pool	36 m ²

TOTAL AREA 429.9 m²

Plot of Land	1250.8 m ²
Altimetry	17



QUINTA DE FARO
PRIVATE LUXURY VILLAS
ALGARVE



Cut AA'



Cut BB'

Kitchen equipment is not contractual. Their position is indicative. Dimensions and areas are given subject to technical construction and execution requirements. The fallout from false ceilings, soffits and pipes are not systematically shown. The thickness of the insulation will be determined by the technical execution study and therefore the data in this plan are only indicative.

MJ Développement
55 Avenue d'Espagne
64600 ANGLÈT - FRANCE
Tel: +33 5 59 03 13 00

MJ DÉVELOPPEMENT
PROMOTEUR CONSTRUCTEUR

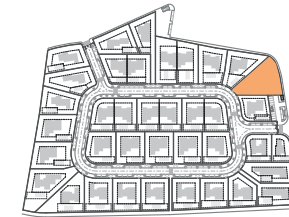
Serip Groupe
2, avenue de la Liberté
83120 Sainte-Maxime - FRANCE


SERIP GROUPE

SALES PLAN

VILLA N°19 DOUBLE STOREY

SECTIONAL PLAN



TOTAL INTERIOR LIVING AREA 328.8 m²

GROUND FLOOR 167 m²

Living	40.9 m ²
Dining room	17.7 m ²
Kitchen	14.4 m ²
Office	6.2 m ²
Storeroom	5.1 m ²
Ensuite Bedroom 1	21.2 m ²
Ensuite Bedroom 2	20 m ²
Dressing Ensuite Bedroom 2	3 m ²
Ensuite Bedroom 3	26.7 m ²
Dressing Ensuite Bedroom 3	4.4 m ²
Guest toilet	1.9 m ²
Lobby, Hallway	5.5 m ²

BASEMENT 161.8 m²

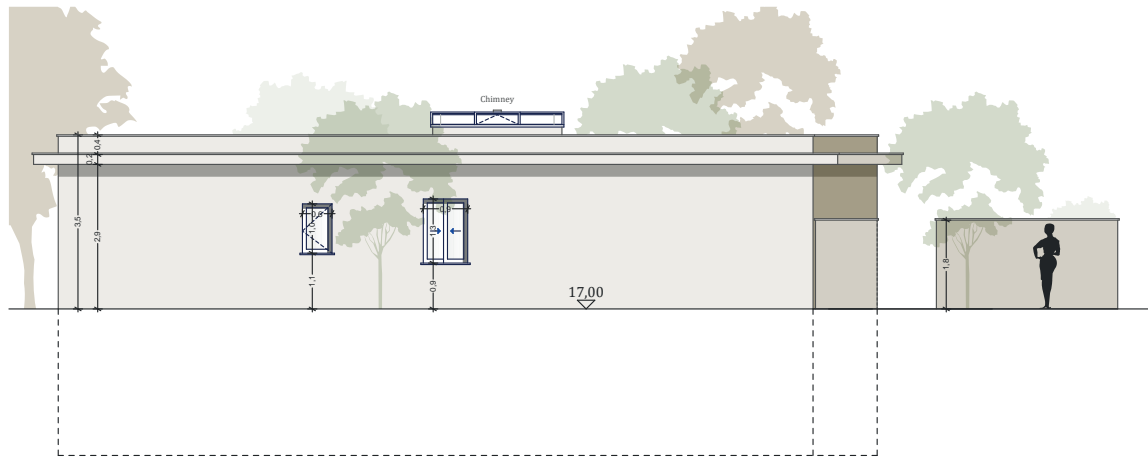
Hallway	17.2 m ²
Ensuite Bedroom 4	17.7 m ²
Laundry	6.9 m ²
Gym, Hammam	21.6 m ²
Wine Cellar	10.2 m ²
Garage	88.2 m ²
Technical room swim Pool	20.9 m ²

TOTAL EXTERIOR AREA 101.1 m²

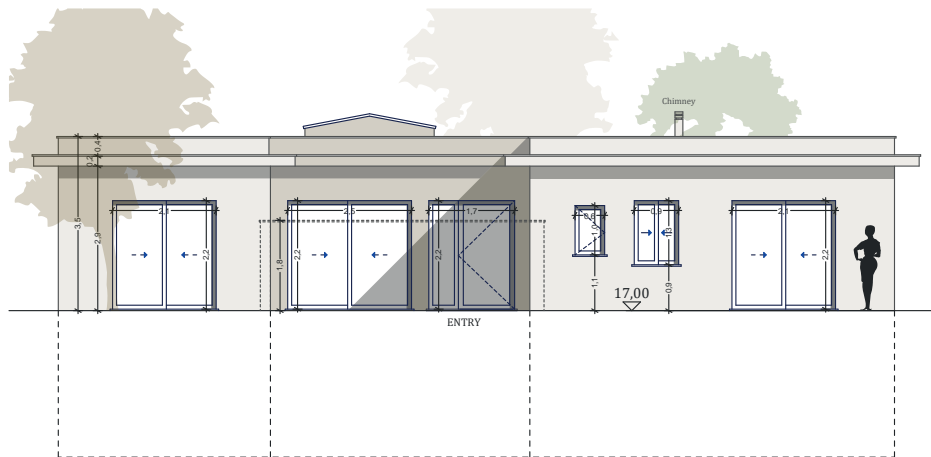
Patio/Fountain	35.7 m ²
Covered terrace	24.6 m ²
Pool Deck	4.8 m ²
Swimming pool	36 m ²

TOTAL AREA 429.9 m²

Plot of Land	1250.8 m ²
Altimetry	17



North elevation



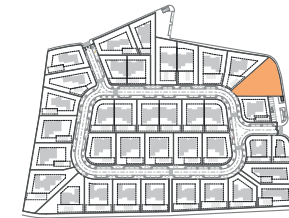
West elevation

Kitchen equipment is not contractual. Their position is indicative. Dimensions and areas are given subject to technical construction and execution requirements. The fallout from false ceilings, soffits and pipes are not systematically shown. The thickness of the insulation will be determined by the technical execution study and therefore the data in this plan are only indicative.

SALES PLAN

VILLA N°19 DOUBLE STOREY

ELEVATIONS



TOTAL INTERIOR LIVING AREA 328.8 m²

GROUND FLOOR 167 m²

Living	40.9 m ²
Dining room	17.7 m ²
Kitchen	14.4 m ²
Office	6.2 m ²
Storeroom	5.1 m ²
Ensuite Bedroom 1	21.2 m ²
Ensuite Bedroom 2	20 m ²
Dressing Ensuite Bedroom 2	3 m ²
Ensuite Bedroom 3	26.7 m ²
Dressing Ensuite Bedroom 3	4.4 m ²
Guest toilet	1.9 m ²
Lobby, Hallway	5.5 m ²

BASEMENT 161.8 m²

Hallway	17.2 m ²
Ensuite Bedroom 4	17.7 m ²
Laundry	6.9 m ²
Gym, Hammam	21.6 m ²
Wine Cellar	10.2 m ²
Garage	88.2 m ²
Technical room swim Pool	20.9 m ²

TOTAL EXTERIOR AREA 101.1 m²

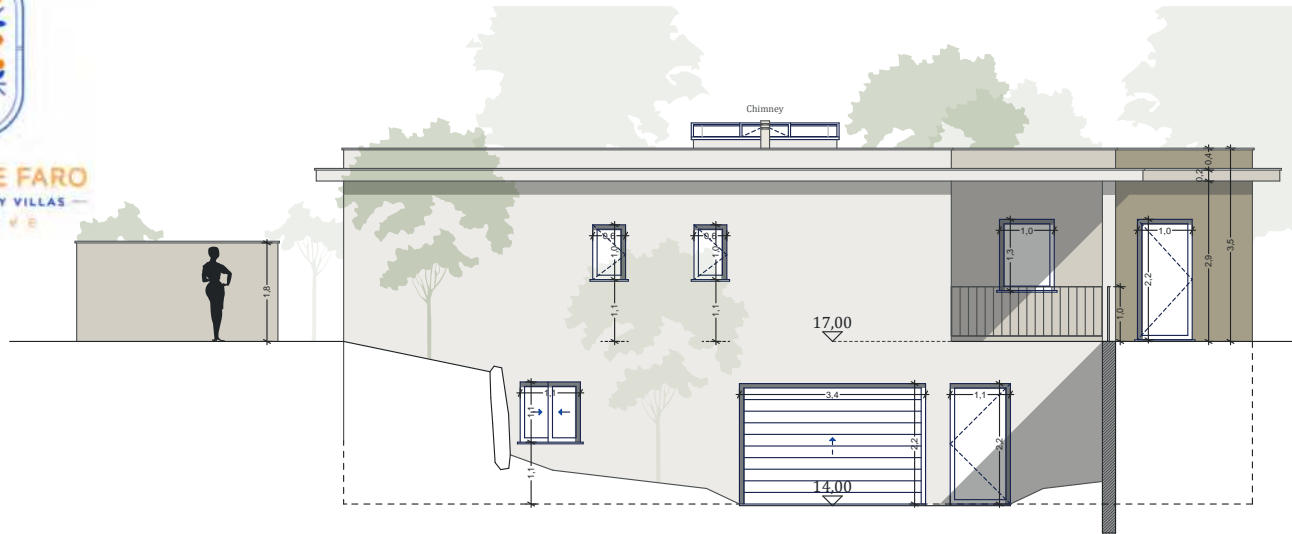
Patio/Fountain	35.7 m ²
Covered terrace	24.6 m ²
Pool Deck	4.8 m ²
Swimming pool	36 m ²

TOTAL AREA 429.9 m²

Plot of Land	1250.8 m ²
Altimetry	17



QUINTA DE FARO
PRIVATE LUXURY VILLAS
ALGARVE



South elevation



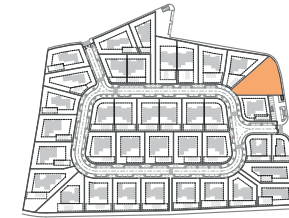
East elevation

Kitchen equipment is not contractual. Their position is indicative. Dimensions and areas are given subject to technical construction and execution requirements. The fallout from false ceilings, soffits and pipes are not systematically shown. The thickness of the insulation will be determined by the technical execution study and therefore the data in this plan are only indicative.

SALES PLAN

VILLA N°19 DOUBLE STOREY

ELEVATIONS



TOTAL INTERIOR LIVING AREA 328.8 m²

GROUND FLOOR 167 m²

Living	40.9 m ²
Dining room	17.7 m ²
Kitchen	14.4 m ²
Office	6.2 m ²
Storeroom	5.1 m ²
Ensuite Bedroom 1	21.2 m ²
Ensuite Bedroom 2	20 m ²
Dressing Ensuite Bedroom 2	3 m ²
Ensuite Bedroom 3	26.7 m ²
Dressing Ensuite Bedroom 3	4.4 m ²
Guest toilet	1.9 m ²
Lobby, Hallway	5.5 m ²

BASEMENT 161.8 m²

Hallway	17.2 m ²
Ensuite Bedroom 4	17.7 m ²
Laundry	6.9 m ²
Gym, Hammam	21.6 m ²
Wine Cellar	10.2 m ²
Garage	88.2 m ²
Technical room swim Pool	20.9 m ²

TOTAL EXTERIOR AREA 101.1 m²

Patio/Fountain	35.7 m ²
Covered terrace	24.6 m ²
Pool Deck	4.8 m ²
Swimming pool	36 m ²

TOTAL AREA 429.9 m²

Plot of Land	1250.8 m ²
Altimetry	17

MJ Développement
55 Avenue d'Espagne
64600 ANGET - FRANCE
Tel: +33 5 59 03 13 00

MJ DÉVELOPPEMENT
PROMOTEUR CONSTRUCTEUR

Serip Groupe
2, avenue de la Liberté
83120 Sainte-Maxime - FRANCE


SERIP GROUPE