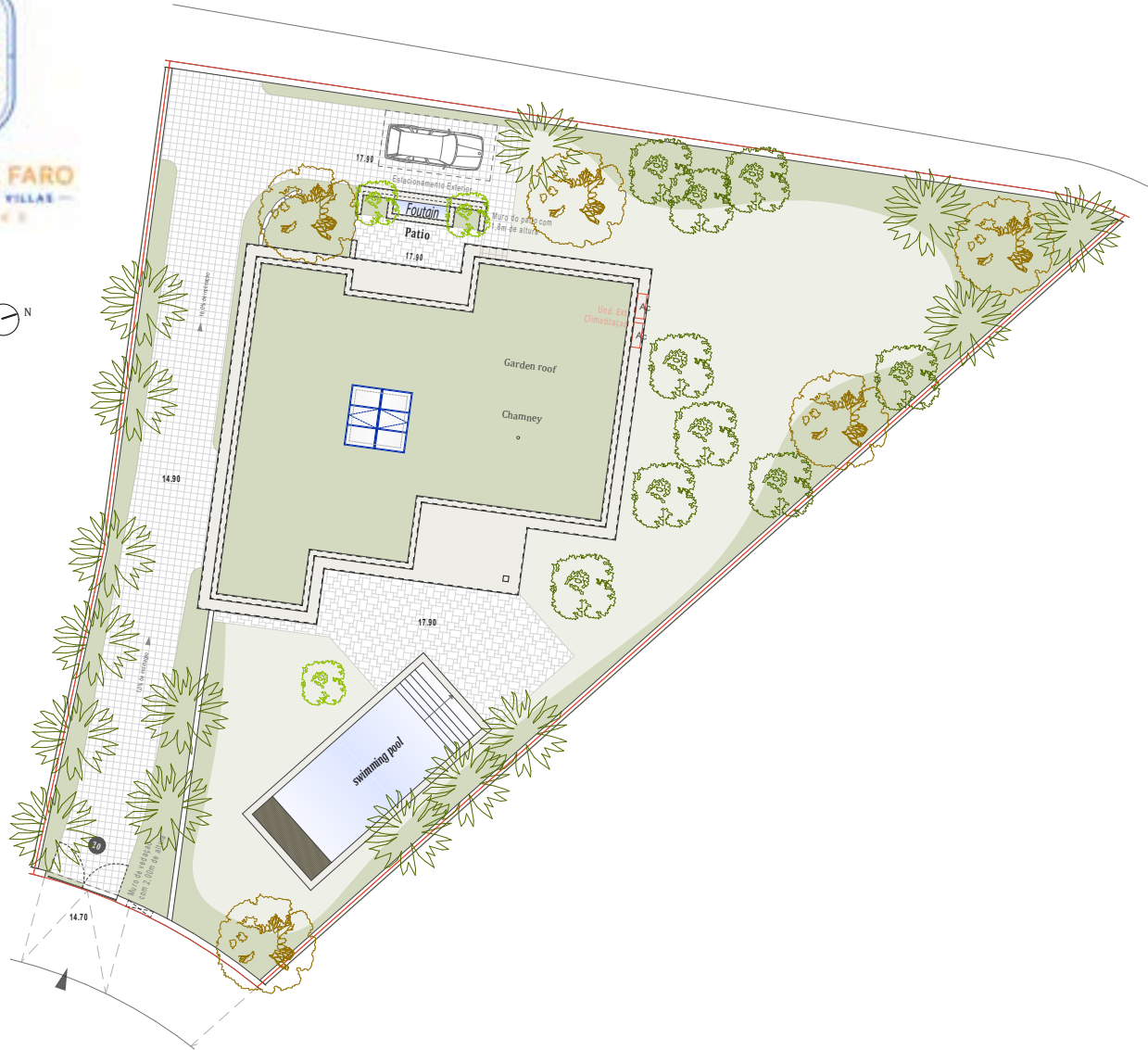




QUINTA DE FARO
PRIVATE LUXURY VILLAS
ALHAMBRA

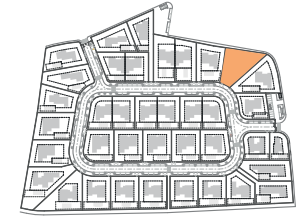


Kitchen equipment is not contractual. Their position is indicative. Dimensions and areas are given subject to technical construction and execution requirements. The fallout from false ceilings, soffits and pipes are not systematically shown. The thickness of the insulation will be determined by the technical execution study and therefore the data in this plan are only indicative.

SALES PLAN

VILLA N°20 DOUBLE STOREY

SITE PLAN



TOTAL INTERIOR LIVING AREA 338.2 m²

GROUND FLOOR 167 m²

Living	40.9 m ²
Dining room	17.7 m ²
Kitchen	14.4 m ²
Office	6.2 m ²
Storeroom	5.1 m ²
Ensuite Bedroom 1	21.2 m ²
Ensuite Bedroom 2	20 m ²
Dressing Ensuite Bedroom 2	3 m ²
Ensuite Bedroom 3	26.7 m ²
Dressing Ensuite Bedroom 3	4.4 m ²
Guest toilet	1.9 m ²
Lobby, Hallway	5.5 m ²

BASEMENT 171.2 m²

Hallway	17.1 m ²
Ensuite Bedroom 4	20.6 m ²
Laundry	9.5 m ²
Gym, Hammam	37 m ²
Wine Cellar	12.9 m ²
Garage	74.1 m ²
Technical room swim Pool	10.5 m ²

TOTAL EXTERIOR AREA 76.3 m²

Patio/Fountain	22.7 m ²
Covered terrace	12.8 m ²
Pool Deck	4.8 m ²
Swimming pool	36 m ²

TOTAL AREA 415.5 m²

Plot of Land	1047.8 m ²
Altimetry	17.9

Co-Developer :

MJ Développement
55 Avenue d'Espagne
64600 ANGLET - FRANCE
Tel: +33 5 59 03 13 00

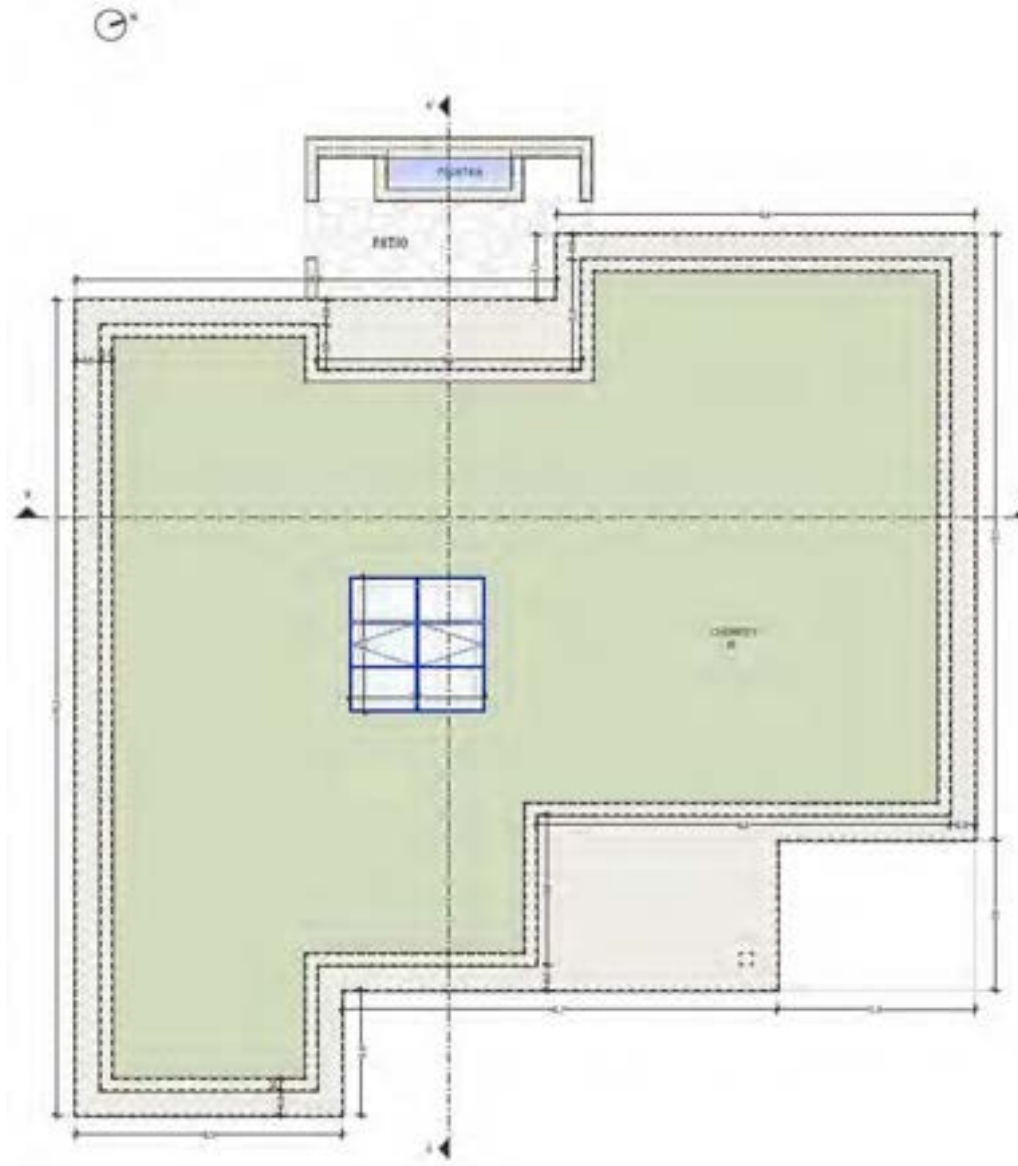
MJ DÉVELOPPEMENT
PROMOTEUR CONSTRUCTEUR

Serip Groupe
2, avenue de la Liberté
83120 Sainte-Maxime - FRANCE


SERIP GROUPE



QUINTA DE FARO
PRIVATE LUXURY VILLAS
ALGARVE



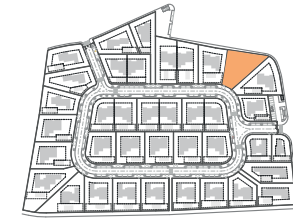
Roof plan

Kitchen equipment is not contractual. Their position is indicative. Dimensions and areas are given subject to technical construction and execution requirements. The fallout from false ceilings, soffits and pipes are not systematically shown. The thickness of the insulation will be determined by the technical execution study and therefore the data in this plan are only indicative.

SALES PLAN

VILLA N°20 DOUBLE STOREY

FLOOR COVERING PLAN



TOTAL INTERIOR LIVING AREA 338.2 m²

GROUND FLOOR 167 m²

Living	40.9 m ²
Dining room	17.7 m ²
Kitchen	14.4 m ²
Office	6.2 m ²
Storeroom	5.1 m ²
Ensuite Bedroom 1	21.2 m ²
Ensuite Bedroom 2	20 m ²
Dressing Ensuite Bedroom 2	3 m ²
Ensuite Bedroom 3	26.7 m ²
Dressing Ensuite Bedroom 3	4.4 m ²
Guest toilet	1.9 m ²
Lobby, Hallway	5.5 m ²

BASEMENT 171.2 m²

Hallway	17.1 m ²
Ensuite Bedroom 4	20.6 m ²
Laundry	9.5 m ²
Gym, Hammam	37 m ²
Wine Cellar	12.9 m ²
Garage	74.1 m ²
Technical room swim Pool	10.5 m ²

TOTAL EXTERIOR AREA 76.3 m²

Patio/Fountain	22.7 m ²
Covered terrace	12.8 m ²
Pool Deck	4.8 m ²
Swimming pool	36 m ²

TOTAL AREA 415.5 m²

Plot of Land	1047.8 m ²
Altimetry	17.9

MJ Développement
55 Avenue d'Espagne
64600 ANGLET - FRANCE
Tel: +33 5 59 03 13 00

MJ DÉVELOPPEMENT
PROMOTEUR CONSTRUCTEUR

Serip Groupe
2, avenue de la Liberté
83120 Sainte-Maxime - FRANCE


SERIP GROUPE



QUINTA DE FARO
PRIVATE LUXURY VILLAS
ALBUFERA



Groundfloor plan

Kitchen equipment is not contractual. Their position is indicative. Dimensions and areas are given subject to technical construction and execution requirements. The fallout from false ceilings, soffits and pipes are not systematically shown. The thickness of the insulation will be determined by the technical execution study and therefore the data in this plan are only indicative.

MJ Développement
55 Avenue d'Espagne
64600 ANGLÈT - FRANCE
Tel: +33 5 59 03 13 00

MJ DÉVELOPPEMENT
PROMOTEUR CONSTRUCTEUR

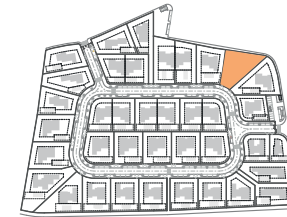
Serip Groupe
2, avenue de la Liberté
83120 Sainte-Maxime - FRANCE


SERIP GROUPE

SALES PLAN

VILLA N°20 DOUBLE STOREY

GROUND FLOOR



TOTAL INTERIOR LIVING AREA 338.2 m²

GROUND FLOOR 167 m²

Living	40.9 m ²
Dining room	17.7 m ²
Kitchen	14.4 m ²
Office	6.2 m ²
Storer room	5.1 m ²
Ensuite Bedroom 1	21.2 m ²
Ensuite Bedroom 2	20 m ²
Dressing Ensuite Bedroom 2	3 m ²
Ensuite Bedroom 3	26.7 m ²
Dressing Ensuite Bedroom 3	4.4 m ²
Guest toilet	1.9 m ²
Lobby, Hallway	5.5 m ²

BASEMENT 171.2 m²

Hallway	17.1 m ²
Ensuite Bedroom 4	20.6 m ²
Laundry	9.5 m ²
Gym, Hammam	37 m ²
Wine Cellar	12.9 m ²
Garage	74.1 m ²
Technical room swim Pool	10.5 m ²

TOTAL EXTERIOR AREA 76.3 m²

Patio/Fountain	22.7 m ²
Covered terrace	12.8 m ²
Pool Deck	4.8 m ²
Swimming pool	36 m ²

TOTAL AREA 415.5 m²

Plot of Land	1047.8 m ²
Altimetry	17.9



QUINTA DE FARO
PRIVATE LUXURY VILLAS
ALGARVE



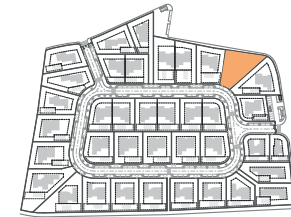
Basement plan

Kitchen equipment is not contractual. Their position is indicative. Dimensions and areas are given subject to technical construction and execution requirements. The fallout from false ceilings, soffits and pipes are not systematically shown. The thickness of the insulation will be determined by the technical execution study and therefore the data in this plan are only indicative.

SALES PLAN

VILLA N°20 DOUBLE STOREY

BASEMENT



TOTAL INTERIOR LIVING AREA 338.2 m²

GROUND FLOOR 167 m²

Living	40.9 m ²
Dining room	17.7 m ²
Kitchen	14.4 m ²
Office	6.2 m ²
Storeroom	5.1 m ²
Ensuite Bedroom 1	21.2 m ²
Ensuite Bedroom 2	20 m ²
Dressing Ensuite Bedroom 2	3 m ²
Ensuite Bedroom 3	26.7 m ²
Dressing Ensuite Bedroom 3	4.4 m ²
Guest toilet	1.9 m ²
Lobby, Hallway	5.5 m ²

BASEMENT 171.2 m²

Hallway	17.1 m ²
Ensuite Bedroom 4	20.6 m ²
Laundry	9.5 m ²
Gym, Hammam	37 m ²
Wine Cellar	12.9 m ²
Garage	74.1 m ²
Technical room swim Pool	10.5 m ²

TOTAL EXTERIOR AREA 76.3 m²

Patio/Fountain	22.7 m ²
Covered terrace	12.8 m ²
Pool Deck	4.8 m ²
Swimming pool	36 m ²

TOTAL AREA 415.5 m²

Plot of Land	1047.8 m ²
Altimetry	17.9

MJ Développement
55 Avenue d'Espagne
64600 ANGLÈT - FRANCE
Tel: +33 5 59 03 13 00

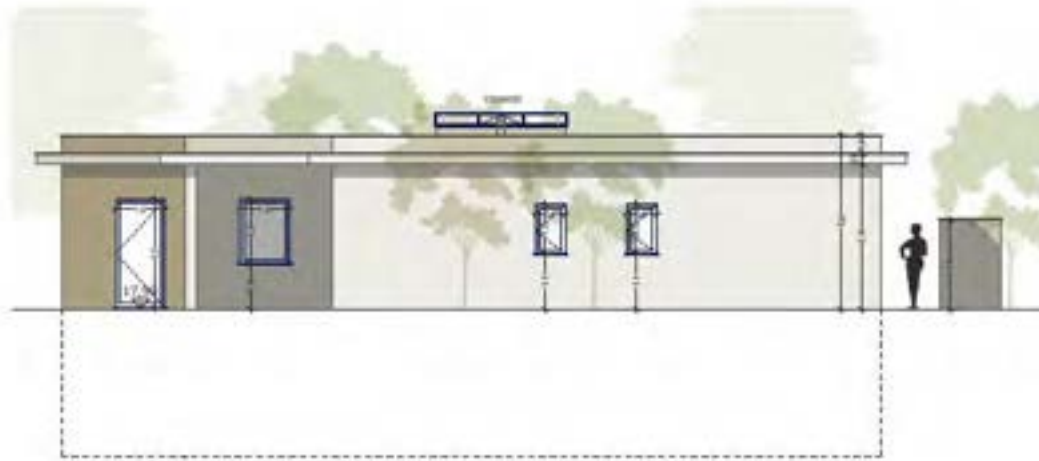
MJ DÉVELOPPEMENT
PROMOTEUR CONSTRUCTEUR

Serip Groupe
2, avenue de la Liberté
83120 Sainte-Maxime - FRANCE


SERIP GROUPE



QUINTA DE FARO
PRIVATE LUXURY VILLAS
ALGARVE



North elevation



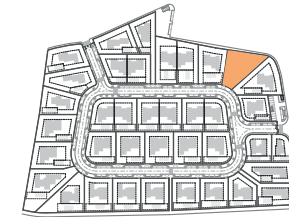
West elevation

Kitchen equipment is not contractual. Their position is indicative. Dimensions and areas are given subject to technical construction and execution requirements. The fallout from false ceilings, so'ts and pipes are not systematically shown. The thickness of the insulation will be determined by the technical execution study and therefore the data in this plan are only indicative.

SALES PLAN

VILLA N°20 DOUBLE STOREY

SECTIONAL PLAN



TOTAL INTERIOR LIVING AREA 338.2 m²

GROUND FLOOR 167 m²

Living	40.9 m ²
Dining room	17.7 m ²
Kitchen	14.4 m ²
Office	6.2 m ²
Storeroom	5.1 m ²
Ensuite Bedroom 1	21.2 m ²
Ensuite Bedroom 2	20 m ²
Dressing Ensuite Bedroom 2	3 m ²
Ensuite Bedroom 3	26.7 m ²
Dressing Ensuite Bedroom 3	4.4 m ²
Guest toilet	1.9 m ²
Lobby, Hallway	5.5 m ²

BASEMENT 171.2 m²

Hallway	17.1 m ²
Ensuite Bedroom 4	20.6 m ²
Laundry	9.5 m ²
Gym, Hammam	37 m ²
Wine Cellar	12.9 m ²
Garage	74.1 m ²
Technical room swim Pool	10.5 m ²

TOTAL EXTERIOR AREA 76.3 m²

Patio/Fountain	22.7 m ²
Covered terrace	12.8 m ²
Pool Deck	4.8 m ²
Swimming pool	36 m ²

TOTAL AREA 415.5 m²

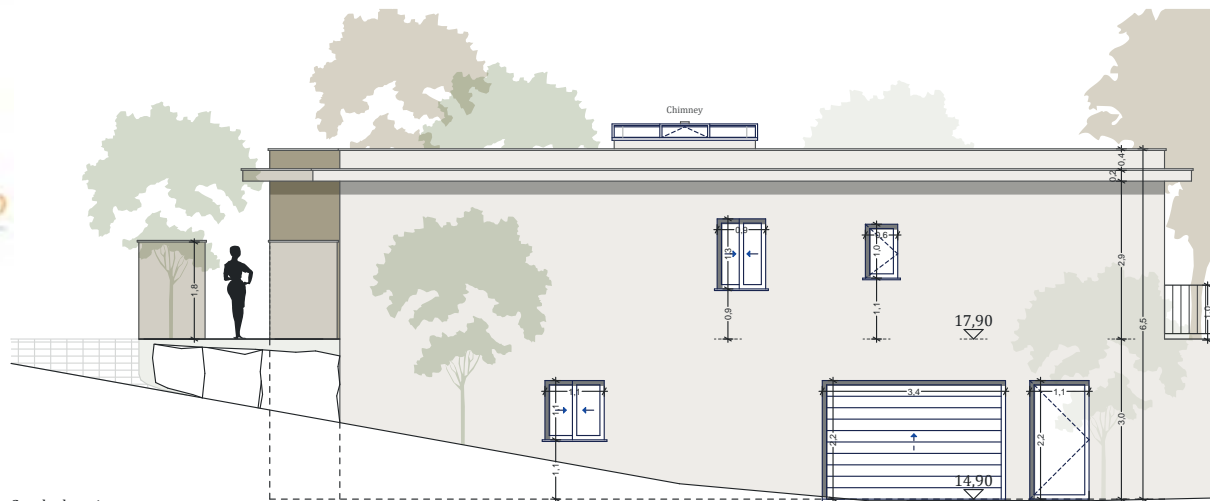
Plot of Land	1047.8 m ²
Altimetry	17.9

MJ Développement
55 Avenue d'Espagne
64600 ANGLET - FRANCE
Tel: +33 5 59 03 13 00

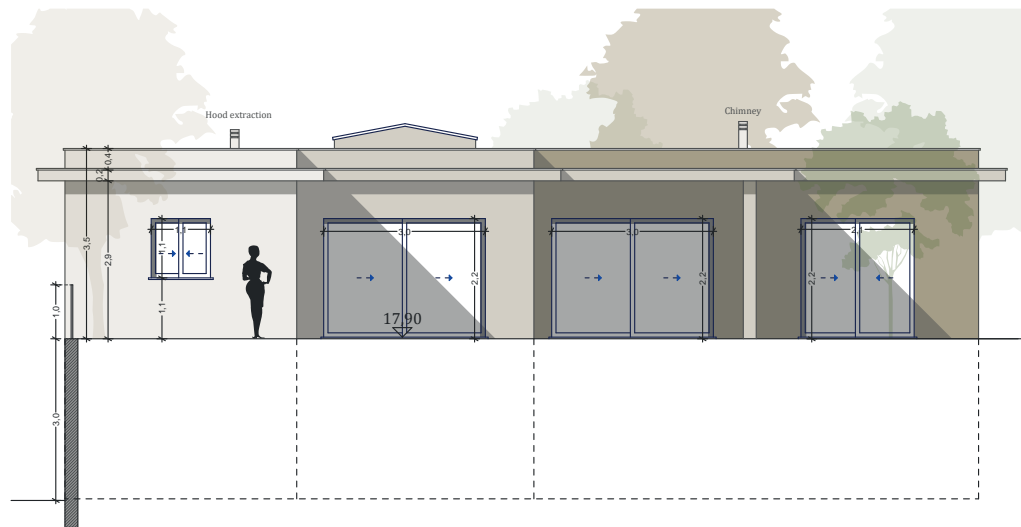
MJ DÉVELOPPEMENT
PROMOTEUR CONSTRUCTEUR

Serip Groupe
2, avenue de la Liberté
83120 Sainte-Maxime - FRANCE


SERIP GROUPE



South elevation



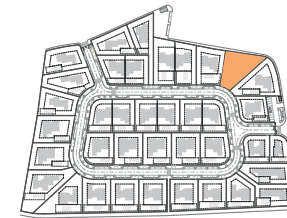
East elevation

Kitchen equipment is not contractual. Their position is indicative. Dimensions and areas are given subject to technical construction and execution requirements. The fallout from false ceilings, soffits and pipes are not systematically shown. The thickness of the insulation will be determined by the technical execution study and therefore the data in this plan are only indicative.

SALES PLAN

VILLA N°20 DOUBLE STOREY

ELEVATIONS



TOTAL INTERIOR LIVING AREA 338.2 m²

GROUND FLOOR 167 m²

Living	40.9 m ²
Dining room	17.7 m ²
Kitchen	14.4 m ²
Office	6.2 m ²
Storeroom	5.1 m ²
Ensuite Bedroom 1	21.2 m ²
Ensuite Bedroom 2	20 m ²
Dressing Ensuite Bedroom 2	3 m ²
Ensuite Bedroom 3	26.7 m ²
Dressing Ensuite Bedroom 3	4.4 m ²
Guest toilet	1.9 m ²
Lobby, Hallway	5.5 m ²

BASEMENT 171.2 m²

Hallway	17.1 m ²
Ensuite Bedroom 4	20.6 m ²
Laundry	9.5 m ²
Gym, Hammam	37 m ²
Wine Cellar	12.9 m ²
Garage	74.1 m ²
Technical room swim Pool	10.5 m ²

TOTAL EXTERIOR AREA 76.3 m²

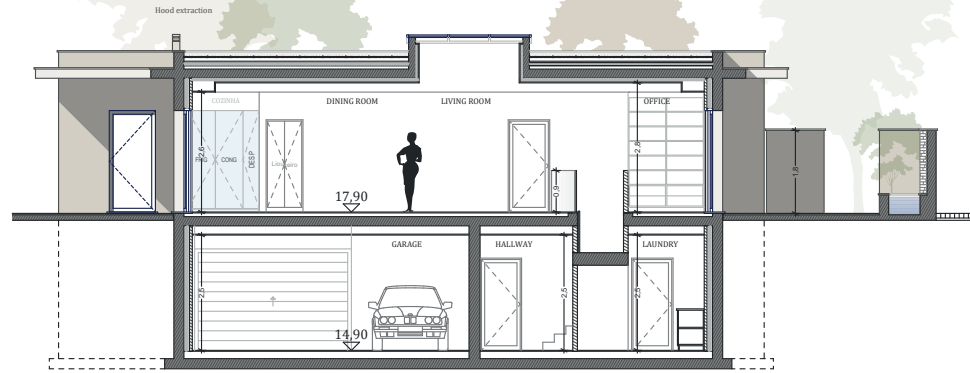
Patio/Fountain	22.7 m ²
Covered terrace	12.8 m ²
Pool Deck	4.8 m ²
Swimming pool	36 m ²

TOTAL AREA 415.5 m²

Plot of Land	1047.8 m ²
Altimetry	17.9



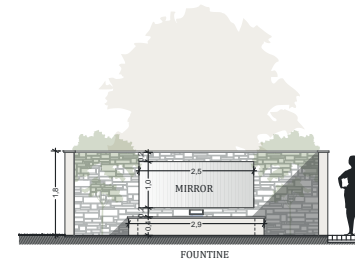
QUINTA DE FARO
PRIVATE LUXURY VILLAS
ALGERIA



Cut AA'



Cut BB'



FOUNTINE

Kitchen equipment is not contractual. Their position is indicative. Dimensions and areas are given subject to technical construction and execution requirements. The fallout from false ceilings, soffits and pipes are not systematically shown. The thickness of the insulation will be determined by the technical execution study and therefore the data in this plan are only indicative.

MJ Développement
55 Avenue d'Espagne
64600 ANGLÈT - FRANCE
Tel: +33 5 59 03 13 00

MJ DÉVELOPPEMENT
PROMOTEUR CONSTRUCTEUR

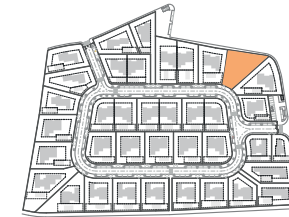
Serip Groupe
2, avenue de la Liberté
83120 Sainte-Maxime - FRANCE


SERIP GROUPE

SALES PLAN

VILLA N°20 DOUBLE STOREY

ELEVATIONS



TOTAL INTERIOR LIVING AREA 338.2 m²

GROUND FLOOR 167 m²

Living	40.9 m ²
Dining room	17.7 m ²
Kitchen	14.4 m ²
Office	6.2 m ²
Storeroom	5.1 m ²
Ensuite Bedroom 1	21.2 m ²
Ensuite Bedroom 2	20 m ²
Dressing Ensuite Bedroom 2	3 m ²
Ensuite Bedroom 3	26.7 m ²
Dressing Ensuite Bedroom 3	4.4 m ²
Guest toilet	1.9 m ²
Lobby, Hallway	5.5 m ²

BASEMENT 171.2 m²

Hallway	17.1 m ²
Ensuite Bedroom 4	20.6 m ²
Laundry	9.5 m ²
Gym, Hammam	37 m ²
Wine Cellar	12.9 m ²
Garage	74.1 m ²
Technical room swim Pool	10.5 m ²

TOTAL EXTERIOR AREA 76.3 m²

Patio/Fountain	22.7 m ²
Covered terrace	12.8 m ²
Pool Deck	4.8 m ²
Swimming pool	36 m ²

TOTAL AREA 415.5 m²

Plot of Land	1047.8 m ²
Altimetry	17.9