

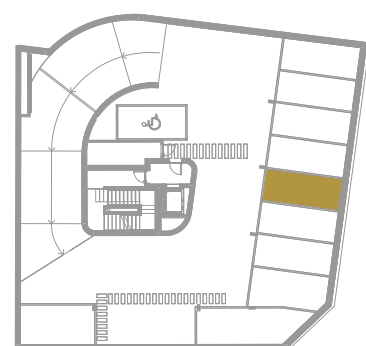
AJ-5.5

T1 / ONE BEDROOM FLAT

1 Parking Space

5.5.1	Hall	5.0 m ²
5.5.2	Living Room/Kitchen	22.0 m ²
5.5.3	Corridor	4.9 m ²
5.5.4	Bedroom	14.5 m ²
5.5.5	Bathroom	4.0 m ²
5.5.6	Balcony	4.2 m ²

Total Gross Area	64.0 m²
Flat	60.3 m ²
Balconies	3.7 m ²



-1 Basement



AJ-5.5

PT: Mobiliário não incluído no valor de venda
ENG: Furniture not included in the sale price

