

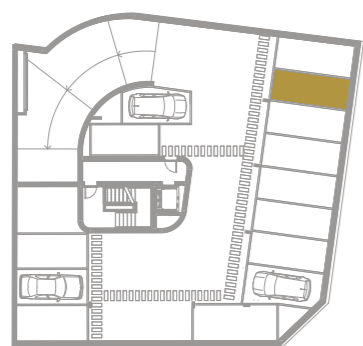
B-1.2

T2 / TWO BEDROOM FLAT

1 Parking Space

1.2.1	Hall	8.8 m ²
1.2.2	Living Room/Kitchen	20.2 m ²
1.2.3	Bathroom	4.5 m ²
1.2.4	Bedroom	10.9 m ²
1.2.5	Bedroom	11.9 m ²

Total Gross Area	69.4 m²
Flat	69.4 m ²
Terrace	N/A



-2 Basement

