

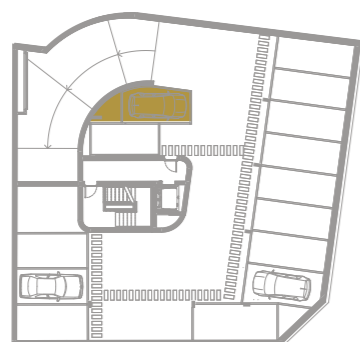
R-3.3

T2 / TWO BEDROOM FLAT

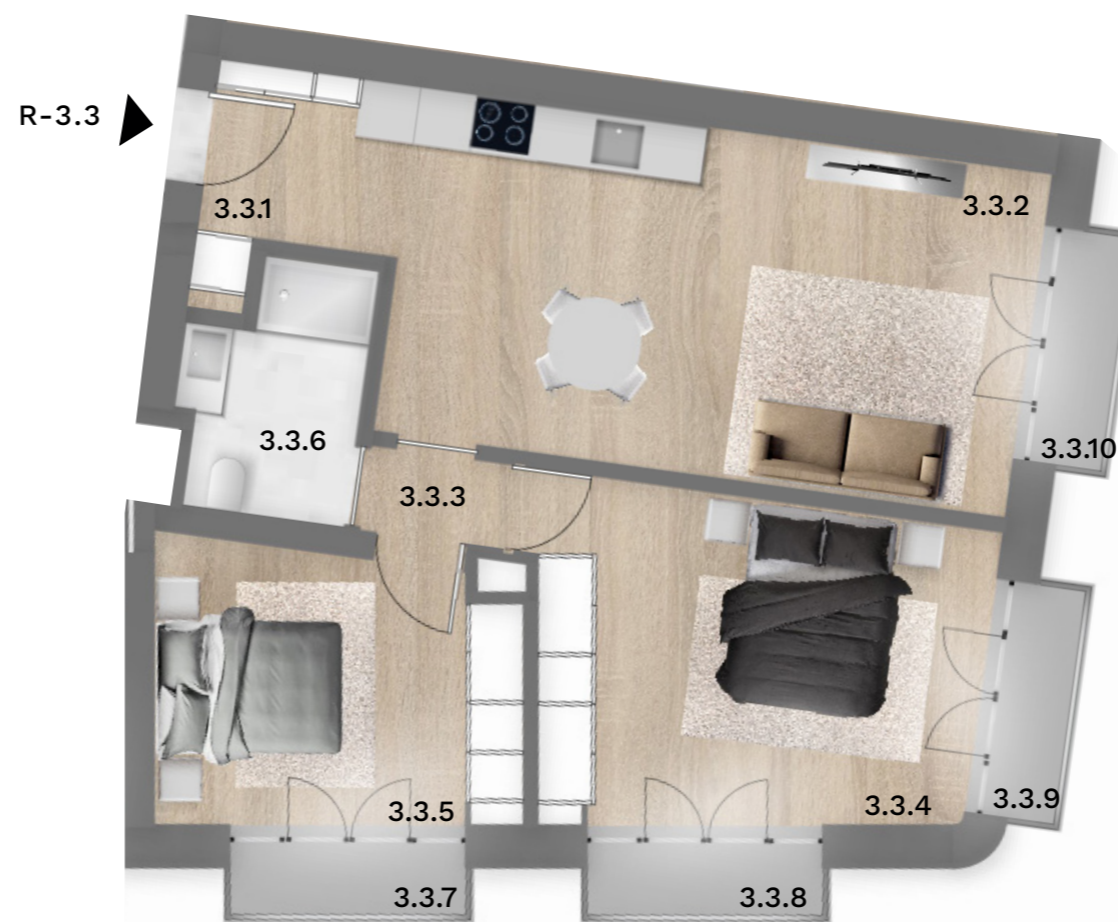
1 Parking Space

3.3.1	Hall	4.3 m ²
3.3.2	Living Room/Kitchen	23.7 m ²
3.3.3	Corridor	1.4 m ²
3.3.4	Bedroom	16.0 m ²
3.3.5	Bedroom	10.6 m ²
3.3.6	Bathroom	4.4 m ²
3.3.7	Balcony	1.3 m ²
3.3.8	Balcony	1.3 m ²
3.3.9	Balcony	1.3 m ²
3.3.10	Balcony	1.3 m ²

Total Gross Area	79.6 m²
Flat	73.6 m ²
Balconies	6.0 m ²



-2 Basement



PT: Mobiliário não incluído no valor de venda
ENG: Furniture not included in the sale price

