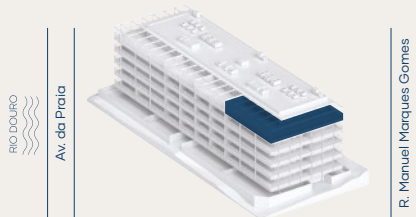


M2.C6AT_T4

ÁREA TOTAL (M²) **3791 m²**

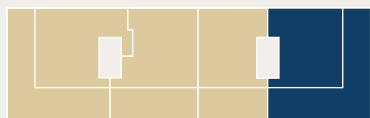


ÁREA BRUTA P. (M²) **180.7 m²**

ÁREA EXTERIOR (M²) **198.3 m²**

ESTACIONAMENTO (M²) **32.0 m²**

ARRECADAÇÕES (M²) **3.8 m²**



PISO 6

