



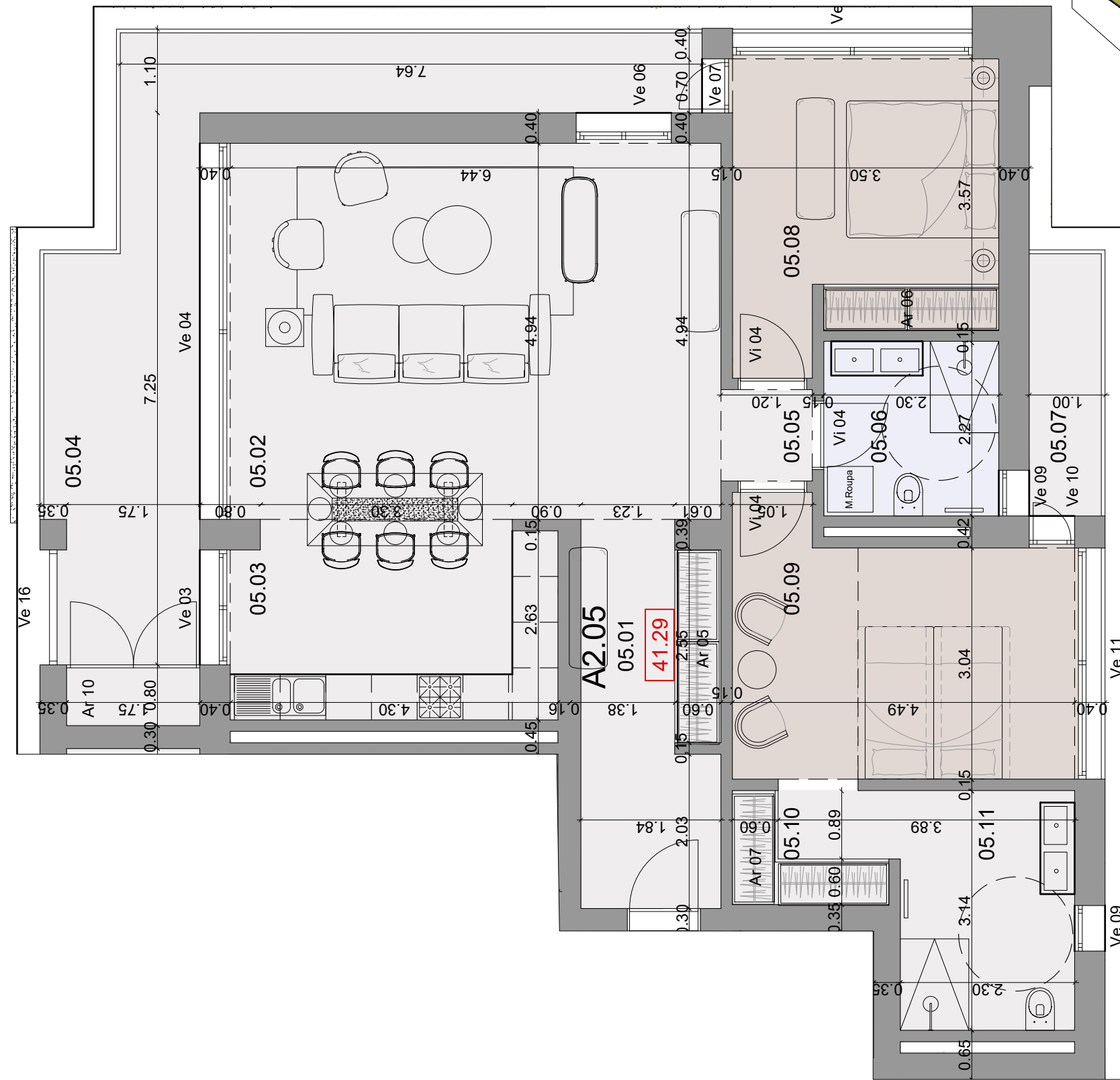
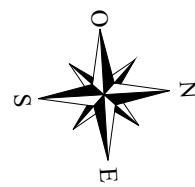
# FERRAGUDO HILLS RESIDENCE

BAT A2 BUILDING      APARTMENT A2.05      1ST FLOOR      T2 TYPE

SURFACES			
05.01	HALL	9.15	m <sup>2</sup>
05.02	LIVING ROOM	31.80	m <sup>2</sup>
05.03	KITCHEN	11.10	m <sup>2</sup>
05.04	TERRACE	22.05	m <sup>2</sup>
05.05	HALLWAY	1.45	m <sup>2</sup>
05.06	BATHROOM	5.30	m <sup>2</sup>
05.07	BALCONY	3.25	m <sup>2</sup>
05.08	BEDROOM	13.00	m <sup>2</sup>
05.09	BEDROOM	14.55	m <sup>2</sup>
05.10	DRESSING	3.20	m <sup>2</sup>
05.11	BATHROOM	7.20	m <sup>2</sup>
INTERNAL LIVING SURFACES		96.75	m <sup>2</sup>
OUTDOOR AREA		25.30	m <sup>2</sup>
TOTAL AREA		122.05	m <sup>2</sup>

PATRIMOINIMMO PORTUGAL, Lda  
URBANIZAÇÃO ENCOSTA DO ARADE, LOTE C1,  
BELA VISTA - LAGOA

DATE : 04-06-2024



NOTE: Changes are likely to be made to this plan depending on the technical studies and the technical requirements for carrying out this program. The indications given on this plan, dimensions, surfaces as well as the position of the technical elements are indicative. False ceilings and radiators are not systematically represented. The indications concerning equipment and internal arrangements are not contractual. The surfaces do not take into account any decorative or technical doubling of the interior walls, which will have to be deducted for the calculation of the living surfaces.

