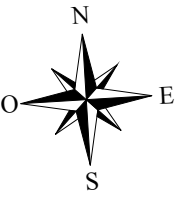
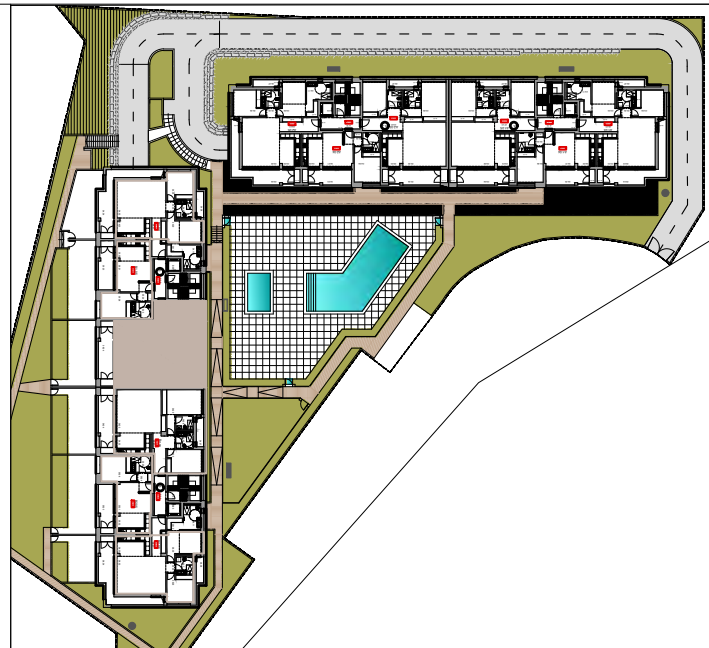


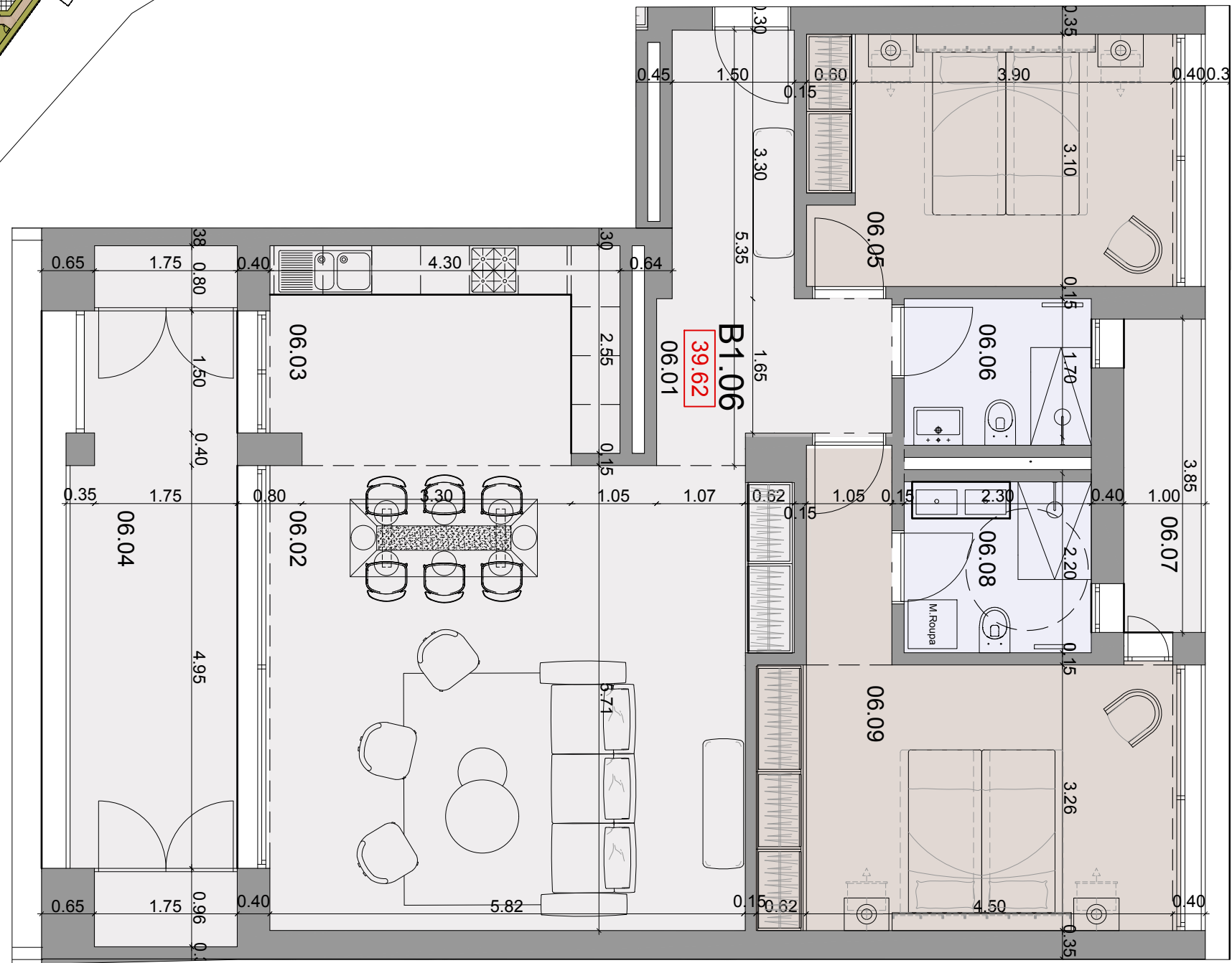


# FERRAGUDO HILLS RESIDENCE



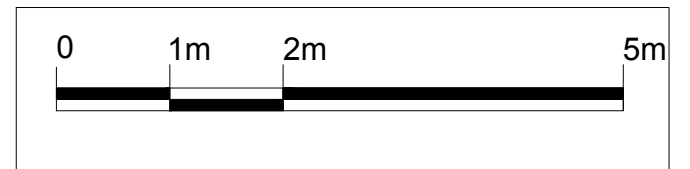
**BAT B1 BUILDING**      **APARTMENT B1.06**      **T2 TYPE**  
**1ST FLOOR**

SURFACES			
06.01	HALL	10.15	m <sup>2</sup>
06.02	LIVING ROOM	34.60	m <sup>2</sup>
06.03	KITCHEN	11.35	m <sup>2</sup>
06.04	TERRACE	16.80	m <sup>2</sup>
06.05	BEDROOM	13.95	m <sup>2</sup>
06.06	BATHROOM	4.10	m <sup>2</sup>
06.07	BALCONY	3.65	m <sup>2</sup>
06.08	BATHROOM	4.80	m <sup>2</sup>
06.09	BEDROOM	19.50	m <sup>2</sup>
INTERNAL LIVING SURFACES		98.45	m <sup>2</sup>
OUTDOOR AREA		20.45	m <sup>2</sup>
TOTAL AREA		118.90	m <sup>2</sup>



PATRIMOINIMMO PORTUGAL, Lda  
 URBANIZAÇÃO ENCOSTA DO ARADE, LOTE C1,  
 BELA VISTA - LAGOA

NOTE: Changes are likely to be made to this plan depending on the technical studies and the technical requirements for carrying out this program. The indications given on this plan, dimensions, surfaces as well as the position of the technical elements are indicative. False ceilings and radiators are not systematically represented. The indications concerning equipment and internal arrangements are not contractual. The surfaces do not take into account any decorative or technical doubling of the interior walls, which will have to be deducted for the calculation of the living surfaces.



**DATE : 04-06-2024**