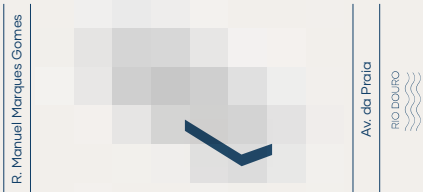


M3.A2L_T3

ÁREA TOTAL (M²) **169.9 m²**

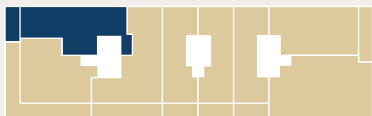


ÁREA BRUTA P. (M²) **133.7 m²**

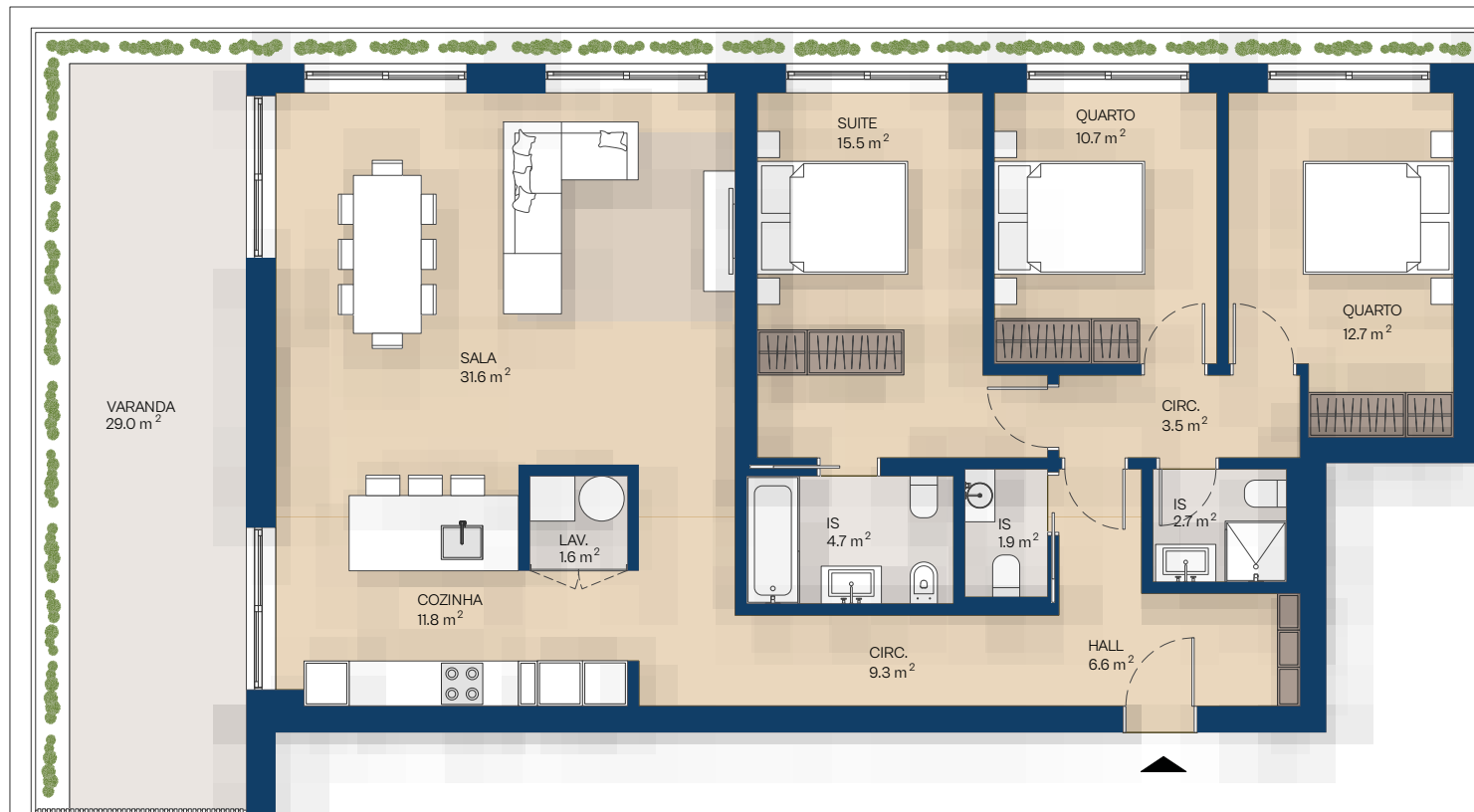
ÁREA EXTERIOR (M²) **36.2 m²**

ESTACIONAMENTO (M²) **27.4 m²**

ARRECADAÇÕES (M²) **3.4 m²**



PISO 2



0 1 2m

