

M3.C3Y_T2

ÁREA TOTAL (M²) **122.1 m²**

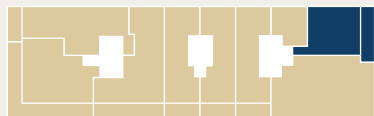


ÁREA BRUTA P. (M²) **89.0 m²**

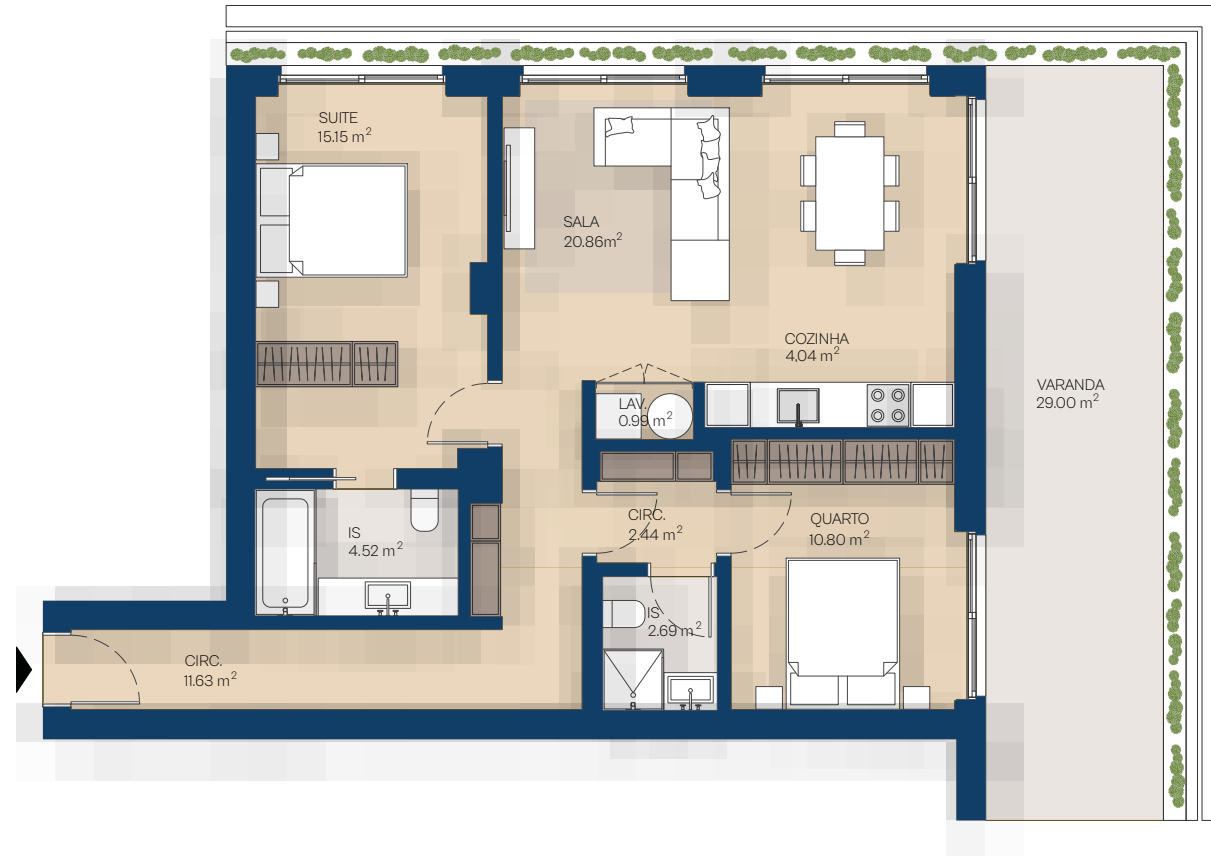
ÁREA EXTERIOR (M²) **33.1 m²**

ESTACIONAMENTO (M²) **14.3 m²**

ARRECADAÇÕES (M²) **3.7 m²**



PISO 3



0 1 2m

