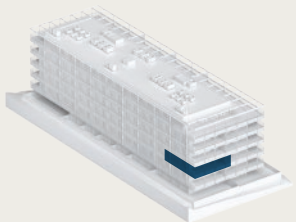


M3.A3T_T2

ÁREA TOTAL (M²) **114.8 m²**

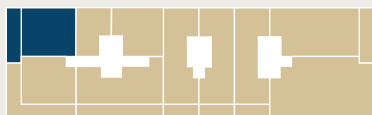


ÁREA BRUTA P. (M²) **85.7 m²**

ÁREA EXTERIOR (M²) **29.1 m²**

ESTACIONAMENTO (M²) **18.6 m²**

ARRECADAÇÕES (M²) **5.4 m²**



PISO 3



0 1 2m

