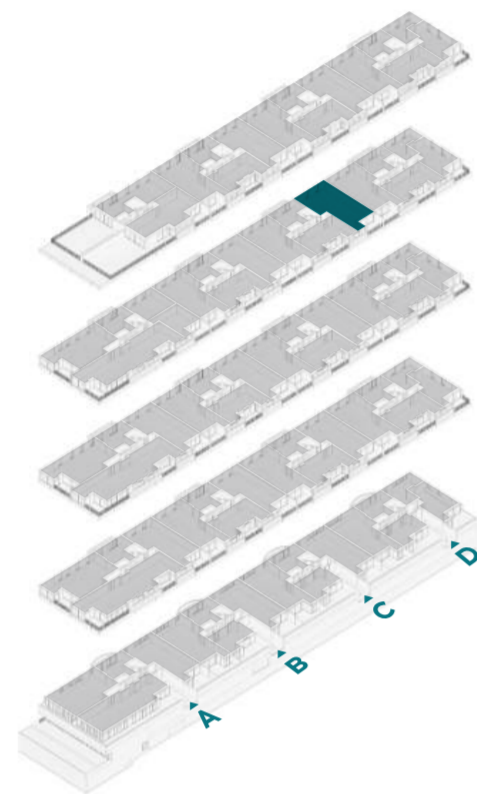


The Breeze

Beachfront Living



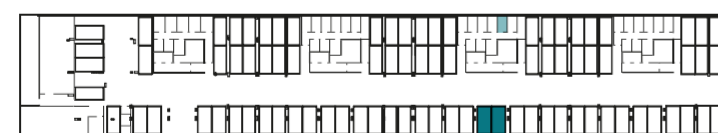
APARTAMENTO **BJ** ENTRADA **C**
 APARTMENT ENTRANCE

PISO **4** TIPOLOGIA **T3**
 FLOOR TYPOLOGY

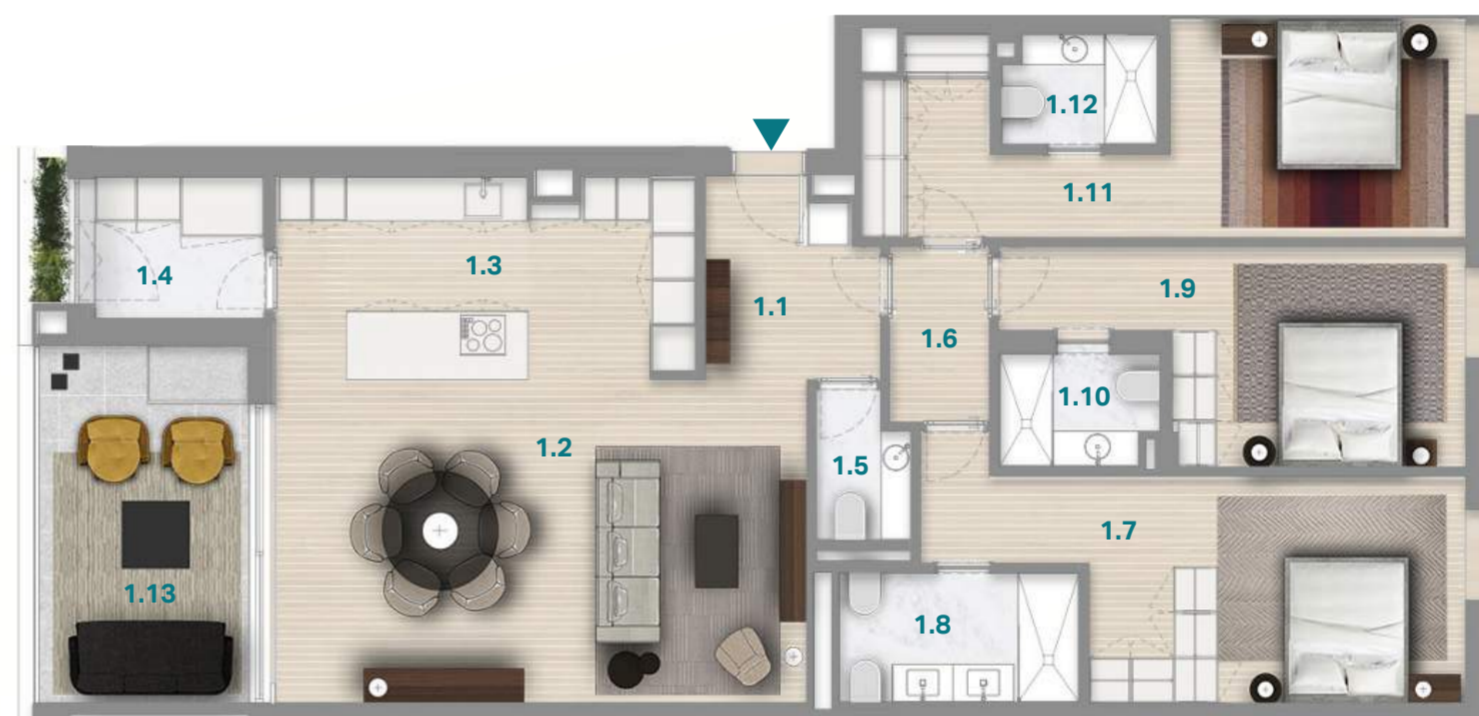
ÁREA TOTAL **161.47 m²**
 TOTAL AREA

ÁREA BRUTA INTERIOR **144.12 m²** ÁREA BRUTA EXTERIOR **17.35 m²**
 GROSS INTERIOR AREA GROSS EXTERIOR AREA

ESTACIONAMENTO **2 LUGARES** ARRUMOS **1**
 PARKING SPOTS STORAGE



PISO -2



1.1 Hall Hall	5.8 m²	1.4 Lavandaria Laundry	4.2 m²	1.7 Suite Suite	18.0 m²	1.10 I.S.2 Bathroom 2	3.0 m²	1.13 Varanda Balcony	13.4 m²
1.2 Sala estar Living room	29.8 m²	1.5 I.S. Social Half Bath	1.9 m²	1.8 I.S.1 Bathroom 1	5.6 m²	1.11 Suite Suite	17.2 m²		
1.3 Cozinha Kitchen	14.2 m²	1.6 Circulação Hallway	3.1 m²	1.9 Suite Suite	13.6 m²	1.12 I.S.3 Bathroom 3	2.9 m²		

AVISO LEGAL: As informações e imagens contidas nesta planta são meramente indicativas e estão sujeitas a alterações ou variações devido a requisitos técnicos, construtivos ou legais; durante a execução da obra a promotora poderá implementar alterações impostas pela Câmara Municipal, ou por outras entidades ou prestadores de serviços. *LEGAL NOTICE: The information and images contained in this plan are merely indicative and may be subject to changes or variations due to technical, constructive or legal requirements; during the execution of the work the developer may have to implement changes imposed by the City Council, or other entities or service providers.*

NOTA: Nos termos do Decreto Regulamentar 5/2019, de 27 de setembro, o piso correspondente à cota de soleira (frequentemente designado por piso 0 ou piso do rés-do-chão) é designado por piso 1. *DISCLAIMER: Under the terms of Regulatory Decree 5/2019, of September 27, the floor corresponding to the threshold level (often referred to as floor 0 or ground floor floor) is designated as floor 1.*