

PALMARES

OCEAN LIVING & GOLF

13B

Unit | Fração

T3 (T2+1)

2 + 1 Bedrooms

Gross Private Area
Área Bruta Privativa

2648 sq ft
246 m²

Total Gross Area
Área Bruta Total

3713 sq ft
345 m²

Terraces
Terraços

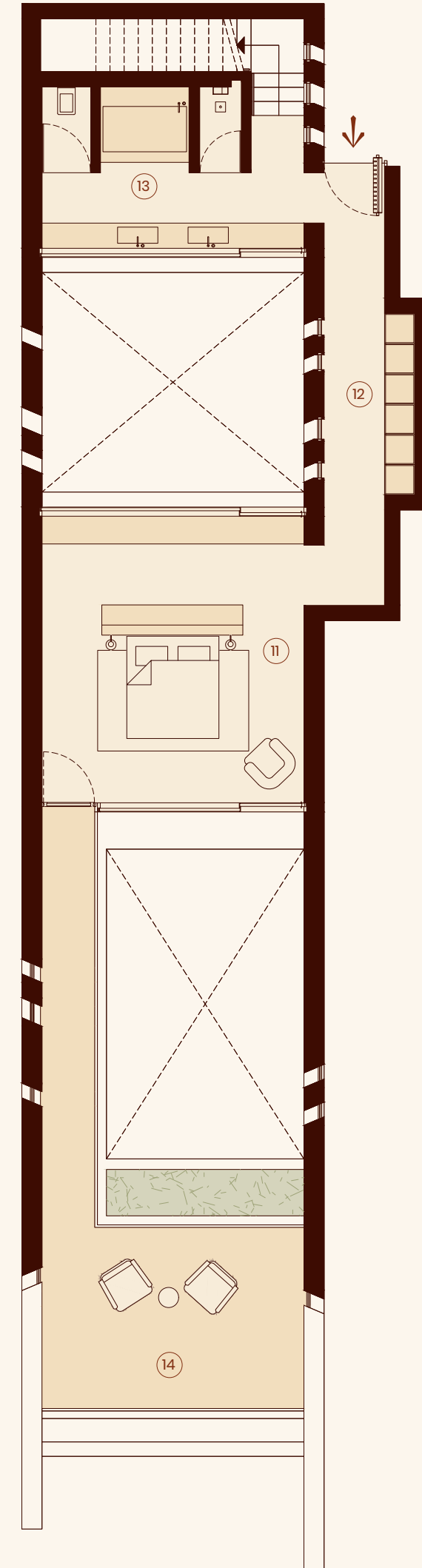
904 sq ft
84 m²

Parking Spaces
Lugares de Estacionamento

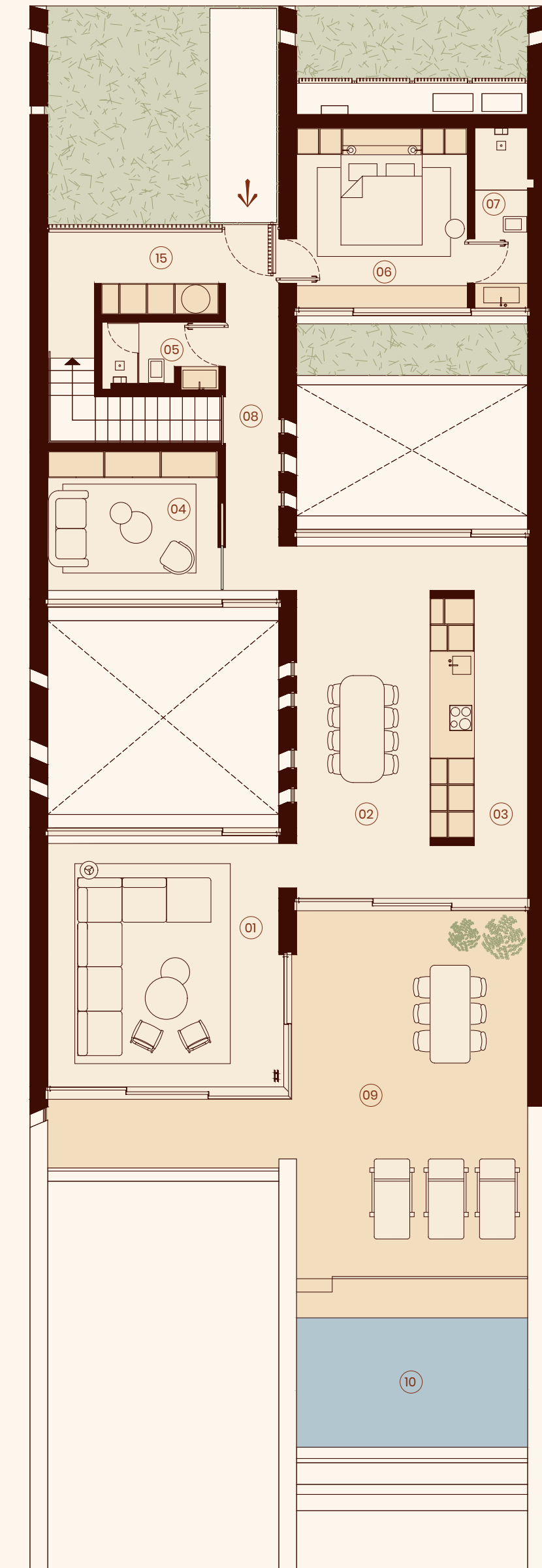
3



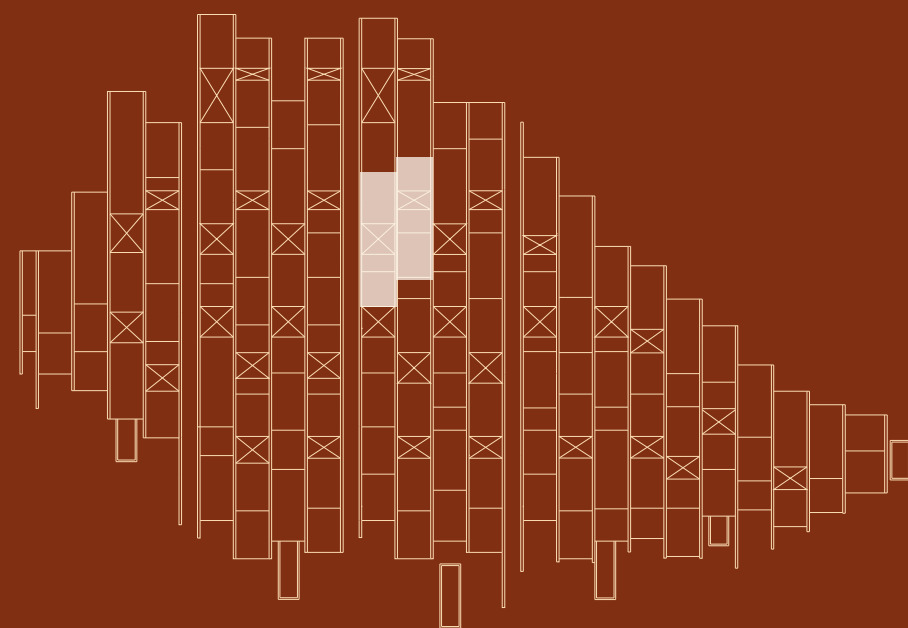
Floor 0
Piso 0



Floor 1
Piso 1



		sq ft	m ²
01	Living Room	323	30
02	Dining Room	269	25
03	Kitchen	194	18
04	Office	140	13
05	Bathroom	43	4
06	Suite	161	15
07	Bathroom	54	5
08	Circulation	151	14
09	Terrace	603	56
10	Pool	161	15
11	Suite	323	30
12	Circulation	140	13
13	Bathroom	172	16
14	Balcony	291	27
15	Hall	75	7



Signature Residences by

RCR ARQUITECTES

from:

The information, images and areas contained in the plans are merely indicative and may, within the scope of the licensing procedure and of the construction works, notably for administrative, technical, commercial, or legal reasons, be subject to modifications, alterations and/or adjustments without prior notice, and therefore have no contractual value.

As informações, imagens e áreas constantes das plantas são meramente indicativas e poderão, no âmbito do processo de licenciamento e de construção, nomeadamente por motivos de ordem administrativa, técnica, comercial ou legal, ser sujeitas a modificações, alterações e/ou ajustamentos sem aviso prévio, pelo que não têm qualquer valor contratual.