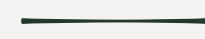


VICEROY

RESIDENCES

OMBRIA ALGARVE



Residence 2202

One Bedroom Suite



OMBRIA



Masterplan



- 1** **Viceroy at Ombria**
— 5 Star Hotel
— Viceroy Residences
 - 2** **Alcedo villas**
— Private villas
 - 3** **Oriole village**
— Apartments
/ Townhouses / Villas
 - 4** **Future development**
 - 5** **Future development (Villas)**
-  **Cycling lane**
 -  **Nature path**
 -  **Jogging path**
 -  **18 hole Golf Course**
 -  **Organic Vegetable Garden**



4

5

6

7

17

19

20

21

16

24

23

22

15

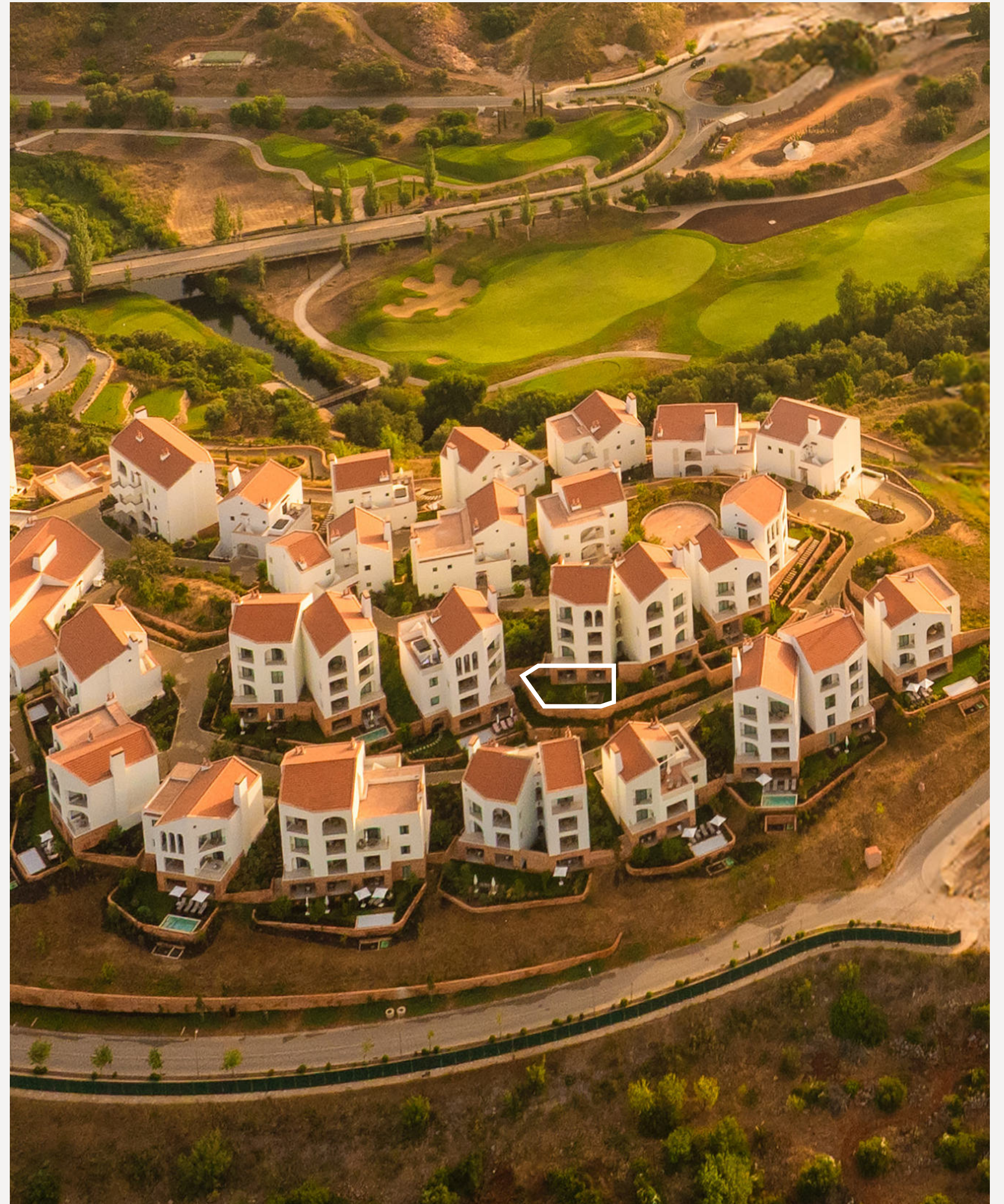
14

13

12

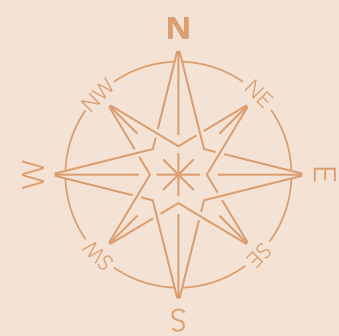
11

10



Viceroy Residences Masterplan

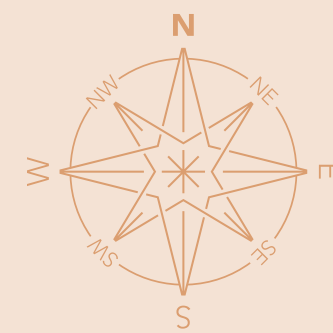
- | | | | |
|---|---------------------------|---|-------------------|
|  | Reception |  | Praça |
|  | Ombria Kitchen |  | Gym |
|  | Cafe Central |  | Clubhouse |
|  | Salpico |  | Spa |
|  | Solalua |  | Kids Club |
|  | Bellvino |  | Conference Centre |
|  | Casa E Fora Bar & Terrace | | |



Viceroy Residences Masterplan

Ground floor

- T0 | One Bedroom Suite
- ▴ T1 | One Bedroom Apartment
- T2 | Two Bedroom Apartment
- Pool / Jacuzzi



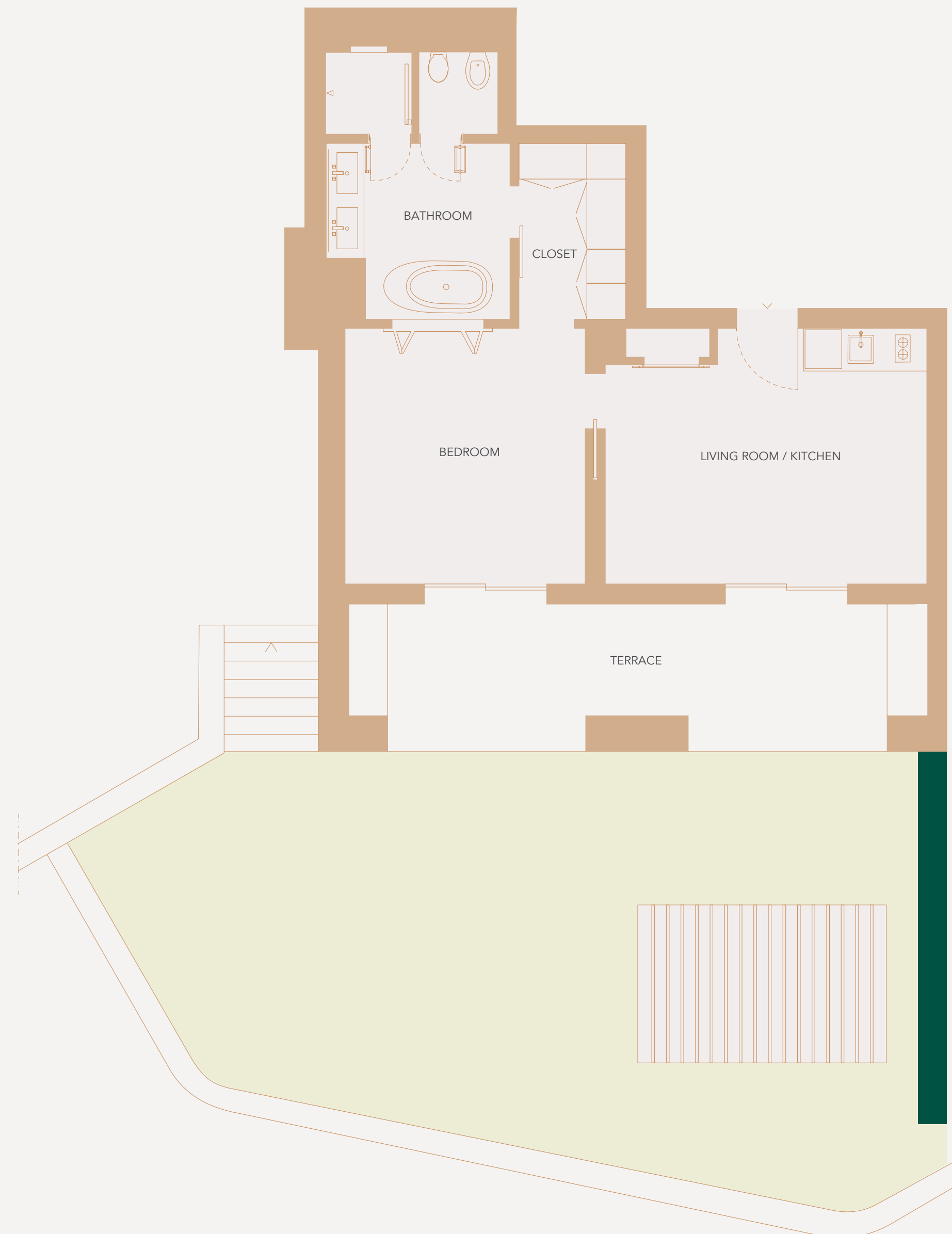
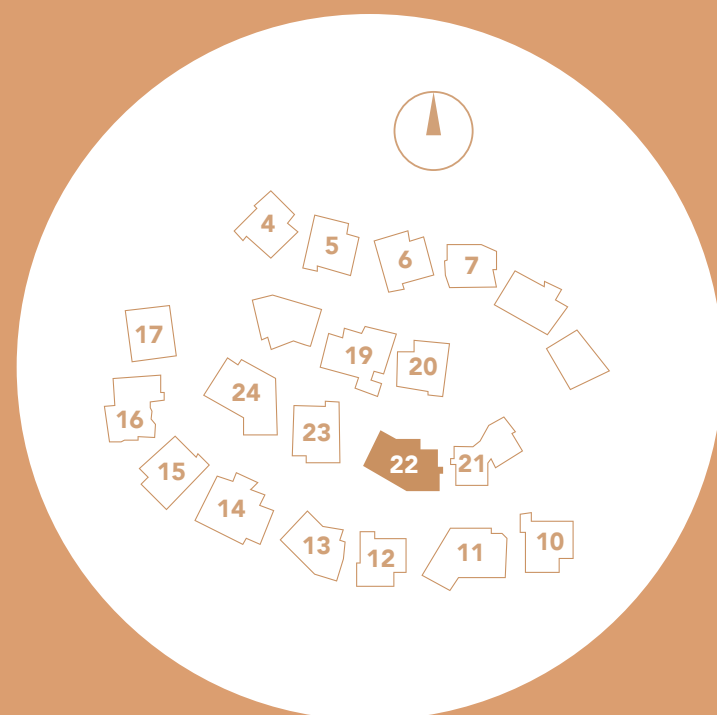


Viceroy Residences

ONE BEDROOM SUITE RESIDENCE 2202 | GROUND FLOOR

GROSS AREAS
Internal Gross C. Area — 73.50 m²
Uncovered Terrace — 97.45 m²
Covered Terrace — 24.87 m²
Total — 195.82 m²

USABLE AREAS
Living room / Kitchen — 21.0 m²
Bedroom — 16.5 m²
Bathroom — 11.9 m²
Closet — 5.0 m²
Terrace — 20.0 m²



[click here to see a Virtual
Tour of this apartment](#)



