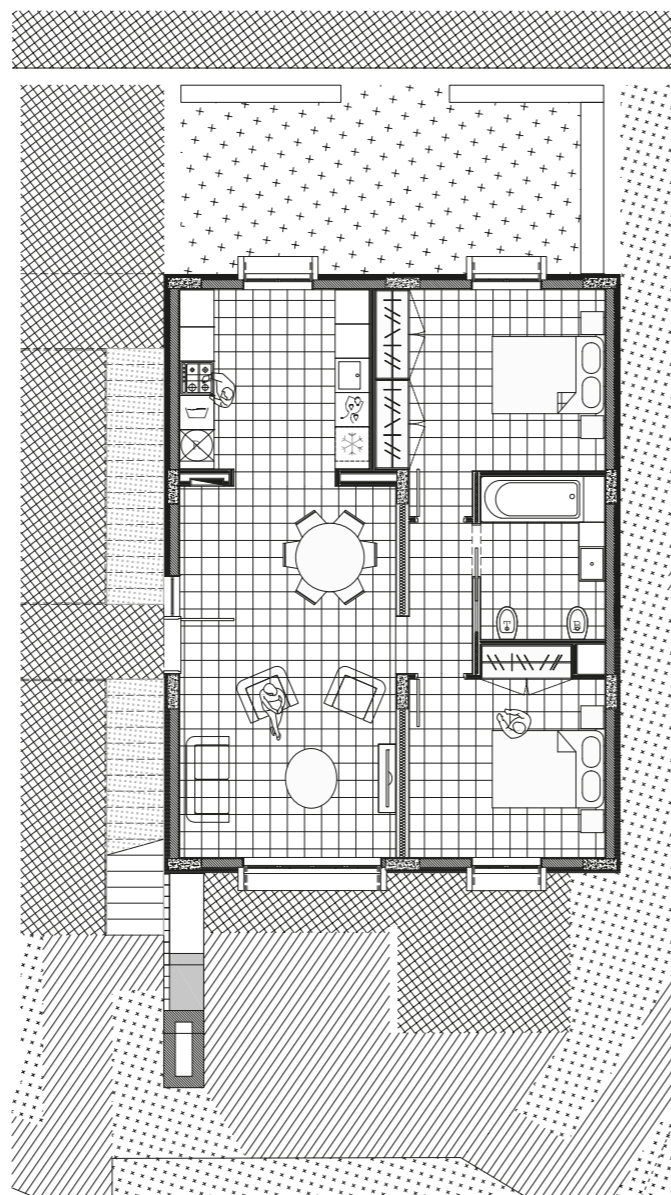


GROUND FLOOR



Plan according to the architectural project, subject to changes according to project implementation or city standards.

AREAS

LIVING ROOM	24,81m ²
KITCHEN	10,95m ²
BEDROOM 1	13,69m ²
CIRCULATION	2,92m ²
BEDROOM 2	11,72m ²
WC	6,18m ²

PRIVATE PLOT AREA
318,14 m²

GROSS CONSTRUCTION AREA
84,00 m²

TERRACES
-

EXTERIOR AREAS
53,57 m²