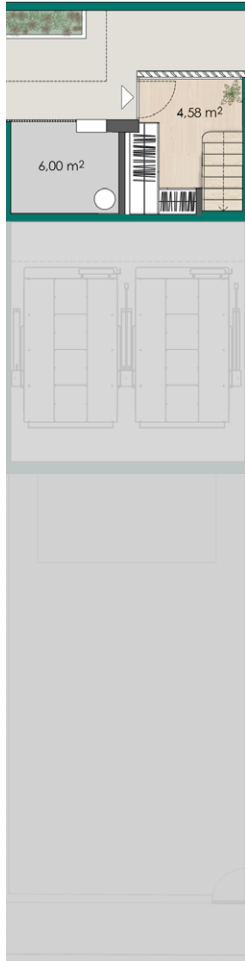




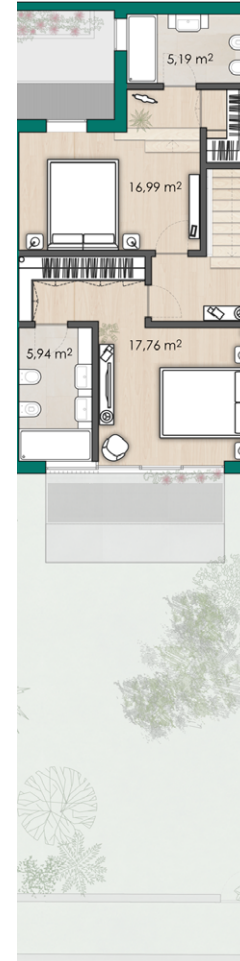
PISO/FLOOR 0



PISO/FLOOR 1



PISO/FLOOR 2



Alçado Sul



Alçado Norte - Corte Longitudinal



ÁREA BRUTA PRIVADA/GPA: 130,70 M²
 TOTAL GROSS PRIVATE AREA

PISO/FLOOR 0: 7,50 M²

PISO/FLOOR 1: 60,80 M²

PISO/FLOOR 2: 62,40 M²

As áreas apresentadas são aproximadas, sem carácter contratual / The areas represented are approximate, and have no contractual nature

