

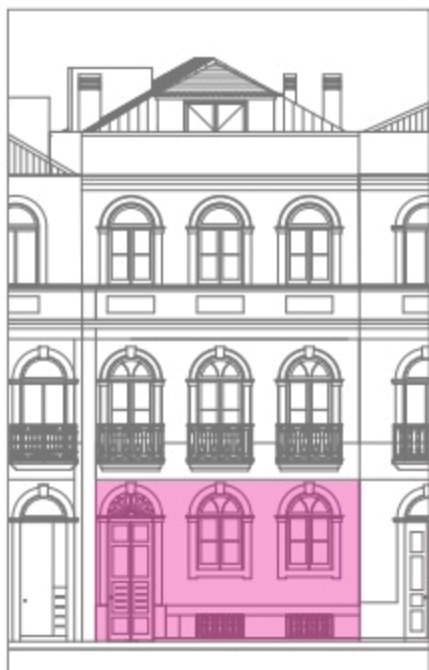
# Apartment **B**

Studio - Ground floor | City view

Apt. gross area w | 50,19 m<sup>2</sup>

## Summarised main areas chart

1 - Kitchen / Living room	31,95 m <sup>2</sup>
2 - Bathroom	6,55 m <sup>2</sup>
3 - Bedroom	9,30 m <sup>2</sup>



city façade

