

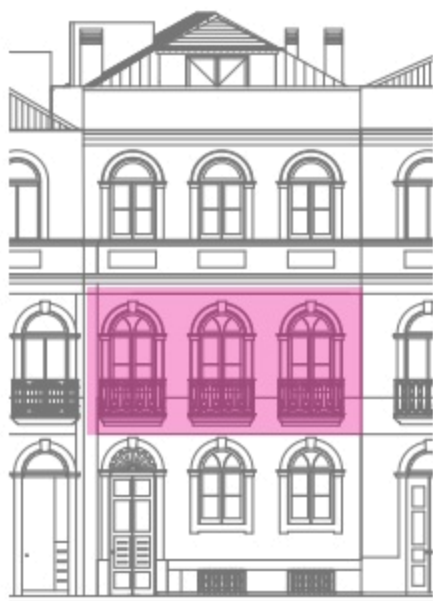
Apartment D

Second floor | City view

Apt. gross area w | 73,65 m²

Summarised main areas chart

1 - Kitchen / Living room	36,08 m ²
2 - Toilet	2,50 m ²
3 - Bathroom	5,98 m ²
4 - Bedroom 1	8,08 m ²
5 - Bedroom 2	15,50 m ²
6 - City view Balconies	2,01 m ²



city façade

