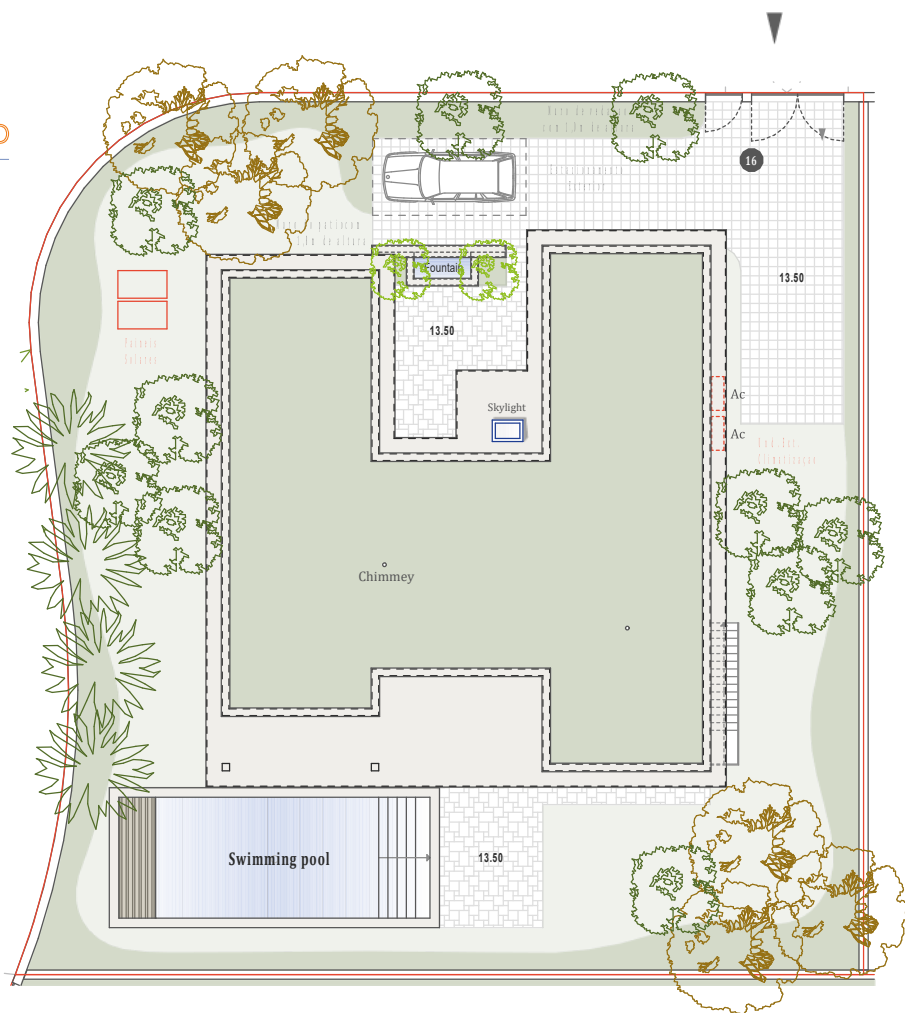




QUINTA DE FARO
— PRIVATE LUXURY VILLAS —
ALGARVE



Ladder

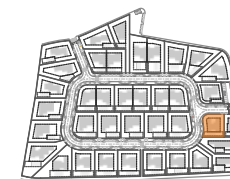
1/200

Kitchen equipment is not contractual. Their position is indicative. Dimensions and areas are given subject to technical construction and execution requirements.
The fallout from false ceilings, soffits and pipes are not systematically shown.
The thickness of the insulation will be determined by the technical execution study and therefore the data in this plan are only indicative.

SALES PLAN

VILLA N°16 SINGLE STOREY

SITE PLAN



TOTAL INTERIOR LIVING AREA 201,2 m²

GROUND FLOOR 170,7 m²

Living	34,6 m ²
Dining room	14,4 m ²
Kitchen	17 m ²
Ensuite Bedroom 1	20,9 m ²
Ensuite Bedroom 2	22,6 m ²
Ensuite Bedroom 3	27,5 m ²
Dressing Ensuite Bedroom 3	2,7 m ²
Guest toilet	3,3 m ²
Entrance	4 m ²
Garage	23,7 m ²

BASEMENT 30,5 m²

Technical room	30,5 m ²
----------------	---------------------

TOTAL EXTERIOR AREA 124,2 m²

Patio/Fountain	30,5 m ²
Covered terrace	25,8 m ²
Pool Deck	31,9 m ²
Swimming pool	36 m ²

TOTAL AREA 325,4 m²

Plot of Land	754,3 m ²
Altimetry	13,5

Co-Developer :

MJ Développement
55 Avenue d'Espagne
64600 ANGLÈT - FRANCE
Tel: +33 5 59 03 13 00

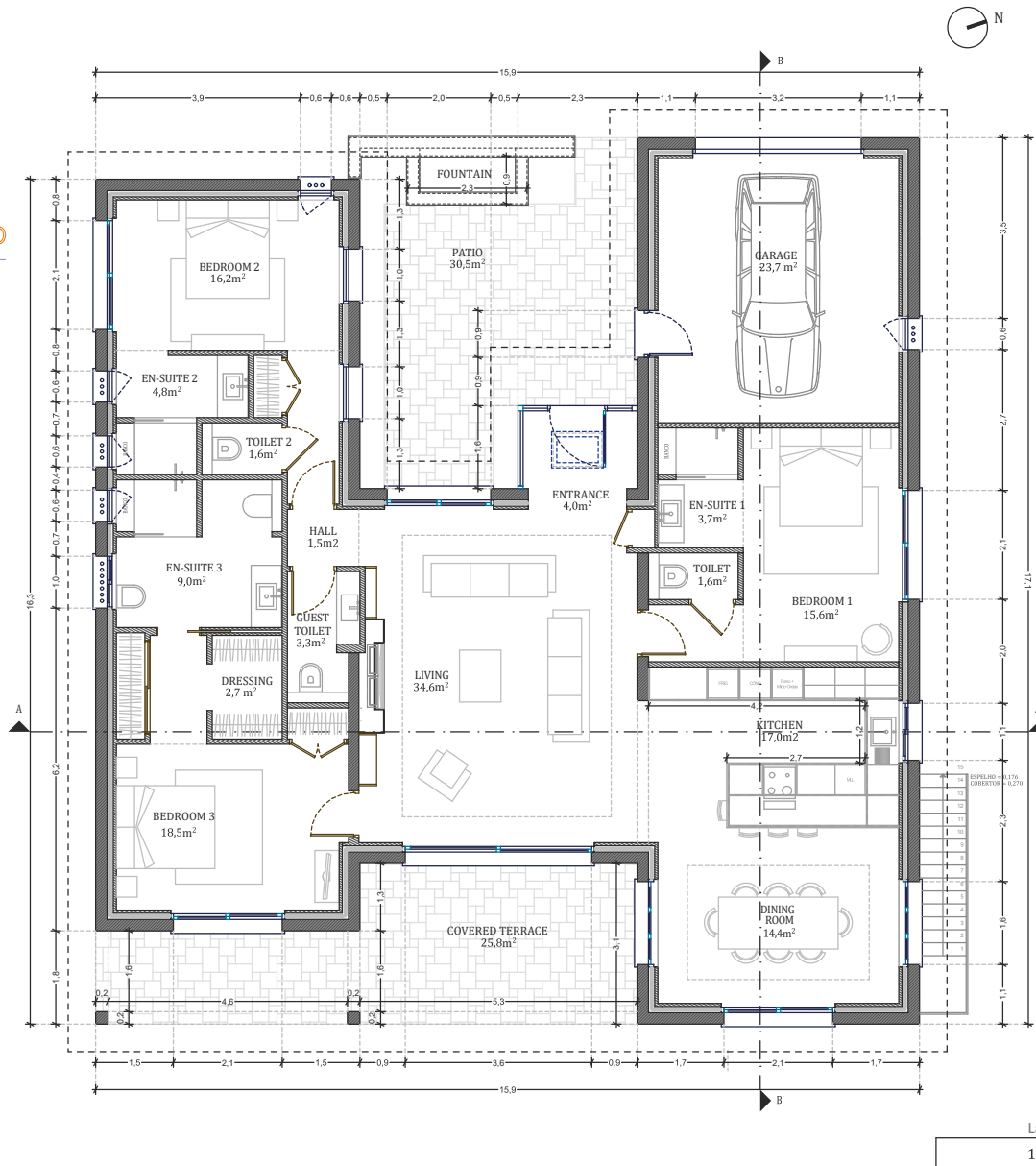
MJ DÉVELOPPEMENT
PROMOTEUR CONSTRUCTEUR

Serip Groupe
2, avenue de la Liberté
83120 Sainte-Maxime - FRANCE

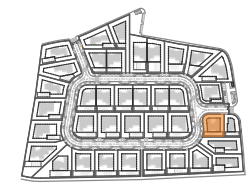

SERIP GROUPE



QUINTA DE FARO
PRIVATE LUXURY VILLAS
ALGARVE



SALES PLAN
VILLA N°16 SINGLE STOREY | GROUND FLOOR



TOTAL INTERIOR LIVING AREA	201,2 m²
GROUND FLOOR	170,7 m²
Living	34,6 m ²
Dining room	14,4 m ²
Kitchen	17 m ²
Ensuite Bedroom 1	20,9 m ²
Ensuite Bedroom 2	22,6 m ²
Ensuite Bedroom 3	27,5 m ²
Dressing Ensuite Bedroom 3	2,7 m ²
Guest toilet	3,3 m ²
Entrance	4 m ²
Garage	23,7 m ²
BASEMENT	30,5 m²
Technical room	30,5 m ²
TOTAL EXTERIOR AREA	124,2 m²
Patio/Fountain	30,5 m ²
Covered terrace	25,8 m ²
Pool Deck	31,9 m ²
Swimming pool	36 m ²
TOTAL AREA	325,4 m²

Plot of Land 754,3 m²
Altimetry 13,5

Kitchen equipment is not contractual. Their position is indicative. Dimensions and areas are given subject to technical construction and execution requirements. The fallout from false ceilings, soffits and pipes are not systematically shown. The thickness of the insulation will be determined by the technical execution study and therefore the data in this plan are only indicative.

Co-Developer :

MJ Développement
55 Avenue d'Espagne
64600 ANGLÈT - FRANCE
Tel: +33 5 59 03 13 00

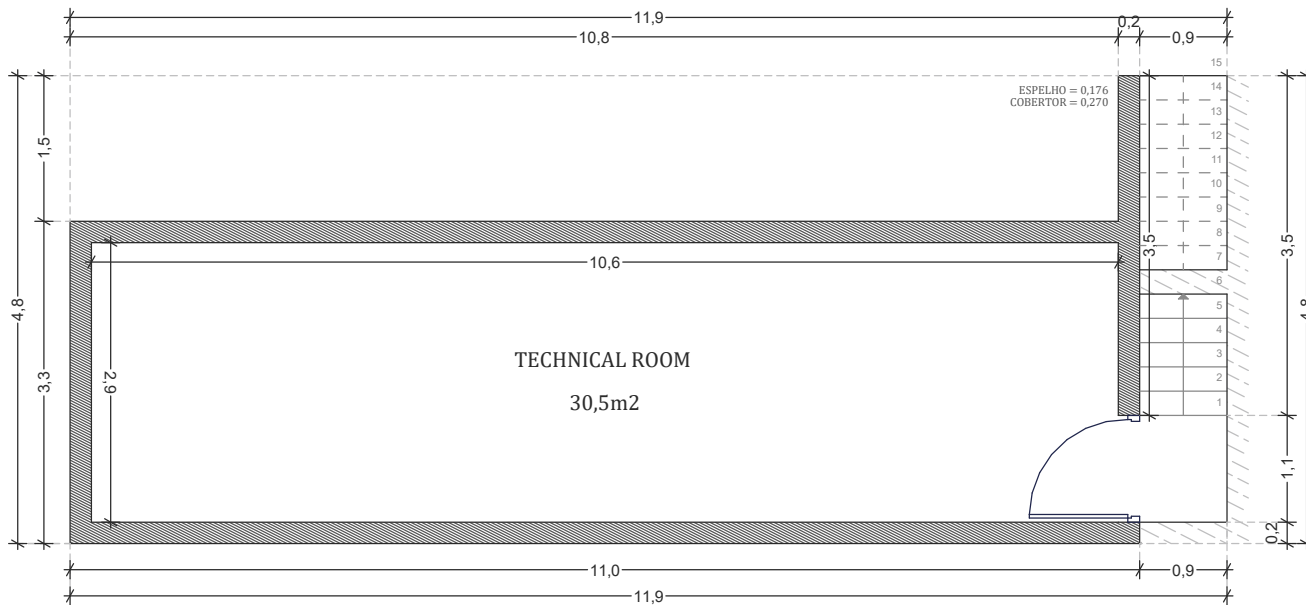


Serip Groupe
2, avenue de la Liberté
83120 Sainte-Maxime - FRANCE





QUINTA DE FARO
— PRIVATE LUXURY VILLAS —
ALGARVE



Ladder

1/100

Kitchen equipment is not contractual. Their position is indicative. Dimensions and areas are given subject to technical construction and execution requirements.
The fallout from false ceilings, soffits and pipes are not systematically shown.
The thickness of the insulation will be determined by the technical execution study and therefore the data in this plan are only indicative.

Co-Developer :

MJ Développement
55 Avenue d'Espagne
64600 ANGLÈT - FRANCE
Tel: +33 5 59 03 13 00



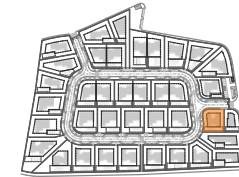
Serip Groupe
2, avenue de la Liberté
83120 Sainte-Maxime - FRANCE



SALES PLAN

VILLA N°16 SINGLE STOREY

BASEMENT



TOTAL INTERIOR LIVING AREA 201,2 m²

GROUND FLOOR 170,7 m²

Living	34,6 m ²
Dining room	14,4 m ²
Kitchen	17 m ²
Ensuite Bedroom 1	20,9 m ²
Ensuite Bedroom 2	22,6 m ²
Ensuite Bedroom 3	27,5 m ²
Dressing Ensuite Bedroom 3	2,7 m ²
Guest toilet	3,3 m ²
Entrance	4 m ²
Garage	23,7 m ²

BASEMENT 30,5 m²

Technical room	30,5 m ²
----------------	---------------------

TOTAL EXTERIOR AREA 124,2 m²

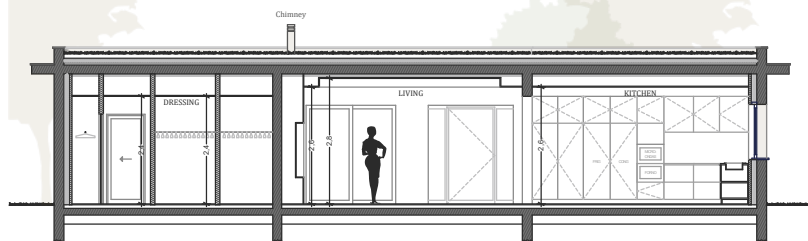
Patio/Fountain	30,5 m ²
Covered terrace	25,8 m ²
Pool Deck	31,9 m ²
Swimming pool	36 m ²

TOTAL AREA 325,4 m²

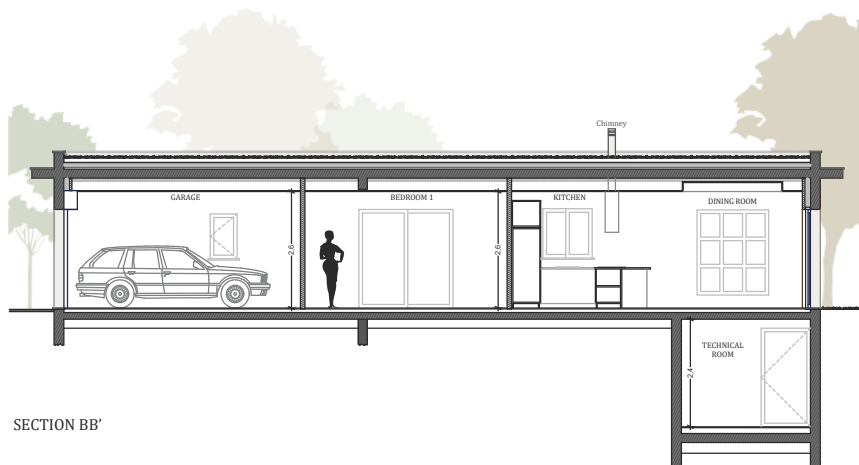
Plot of Land	754,3 m ²
Altimetry	13,5



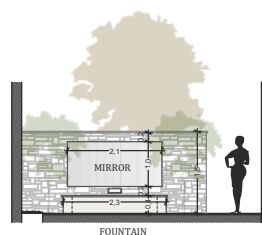
QUINTA DE FARO
PRIVATE LUXURY VILLAS
ALGARVE



SECTION AA'



SECTION BB'



FOUNTAIN

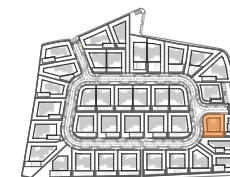
Ladder

1/100

SALES PLAN

VILLA N°16 SINGLE STOREY

SECTIONAL PLAN



TOTAL INTERIOR LIVING AREA 201,2 m²

GROUND FLOOR 170,7 m²

Living	34,6 m ²
Dining room	14,4 m ²
Kitchen	17 m ²
Ensuite Bedroom 1	20,9 m ²
Ensuite Bedroom 2	22,6 m ²
Ensuite Bedroom 3	27,5 m ²
Dressing Ensuite Bedroom 3	2,7 m ²
Guest toilet	3,3 m ²
Entrance	4 m ²
Garage	23,7 m ²

BASEMENT 30,5 m²

Technical room	30,5 m ²
----------------	---------------------

TOTAL EXTERIOR AREA 124,2 m²

Patio/Fountain	30,5 m ²
Covered terrace	25,8 m ²
Pool Deck	31,9 m ²
Swimming pool	36 m ²

TOTAL AREA 325,4 m²

Plot of Land	754,3 m ²
Altimetry	13,5

Kitchen equipment is not contractual. Their position is indicative. Dimensions and areas are given subject to technical construction and execution requirements.
The fallout from false ceilings, soffits and pipes are not systematically shown.
The thickness of the insulation will be determined by the technical execution study and therefore the data in this plan are only indicative.

Co-Developer :

MJ Développement
55 Avenue d'Espagne
64600 ANGLÈT - FRANCE
Tel: +33 5 59 03 13 00

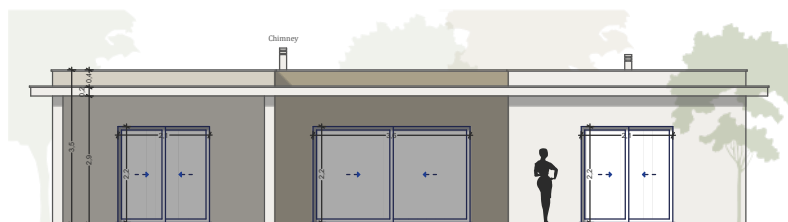
MJ DÉVELOPPEMENT
PROMOTEUR CONSTRUCTEUR

Serip Groupe
2, avenue de la Liberté
83120 Sainte-Maxime - FRANCE

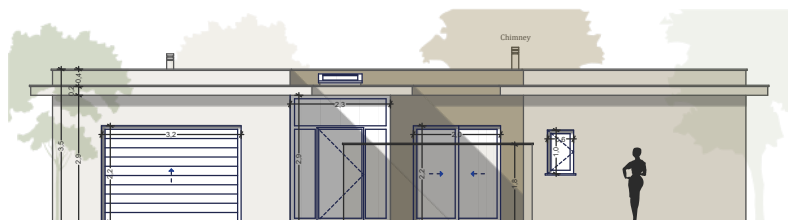

SERIP GROUPE



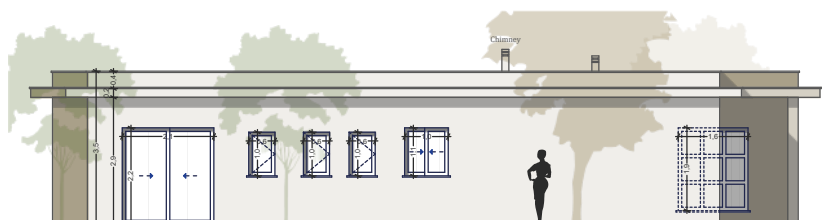
QUINTA DE FARO
PRIVATE LUXURY VILLAS
ALGARVE



East Side



West Side



North Side



South Side



Ladder

1/100

Kitchen equipment is not contractual. Their position is indicative. Dimensions and areas are given subject to technical construction and execution requirements.
The fallout from false ceilings, soffits and pipes are not systematically shown.
The thickness of the insulation will be determined by the technical execution study and therefore the data in this plan are only indicative.

Co-Developer :

MJ Développement
55 Avenue d'Espagne
64600 ANGLÈT - FRANCE
Tel: +33 5 59 03 13 00

MJ DÉVELOPPEMENT
PROMOTEUR CONSTRUCTEUR

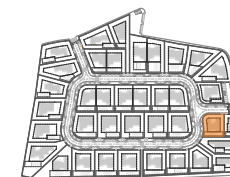
Serip Groupe
2, avenue de la Liberté
83120 Sainte-Maxime - FRANCE


SERIP GROUPE

SALES PLAN

VILLA N°16 SINGLE STOREY

ELEVATIONS



TOTAL INTERIOR LIVING AREA 201,2 m²

GROUND FLOOR 170,7 m²

Living	34,6 m ²
Dining room	14,4 m ²
Kitchen	17 m ²
Ensuite Bedroom 1	20,9 m ²
Ensuite Bedroom 2	22,6 m ²
Ensuite Bedroom 3	27,5 m ²
Dressing Ensuite Bedroom 3	2,7 m ²
Guest toilet	3,3 m ²
Entrance	4 m ²
Garage	23,7 m ²

BASEMENT 30,5 m²

Technical room 30,5 m²

TOTAL EXTERIOR AREA 124,2 m²

Patio/Fountain	30,5 m ²
Covered terrace	25,8 m ²
Pool Deck	31,9 m ²
Swimming pool	36 m ²

TOTAL AREA 325,4 m²

Plot of Land 754,3 m²
Altimetry 13,5