

T3

Piso 0 Ground Floor

B

Área Bruta Privativa
Gross Private Area

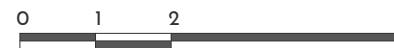
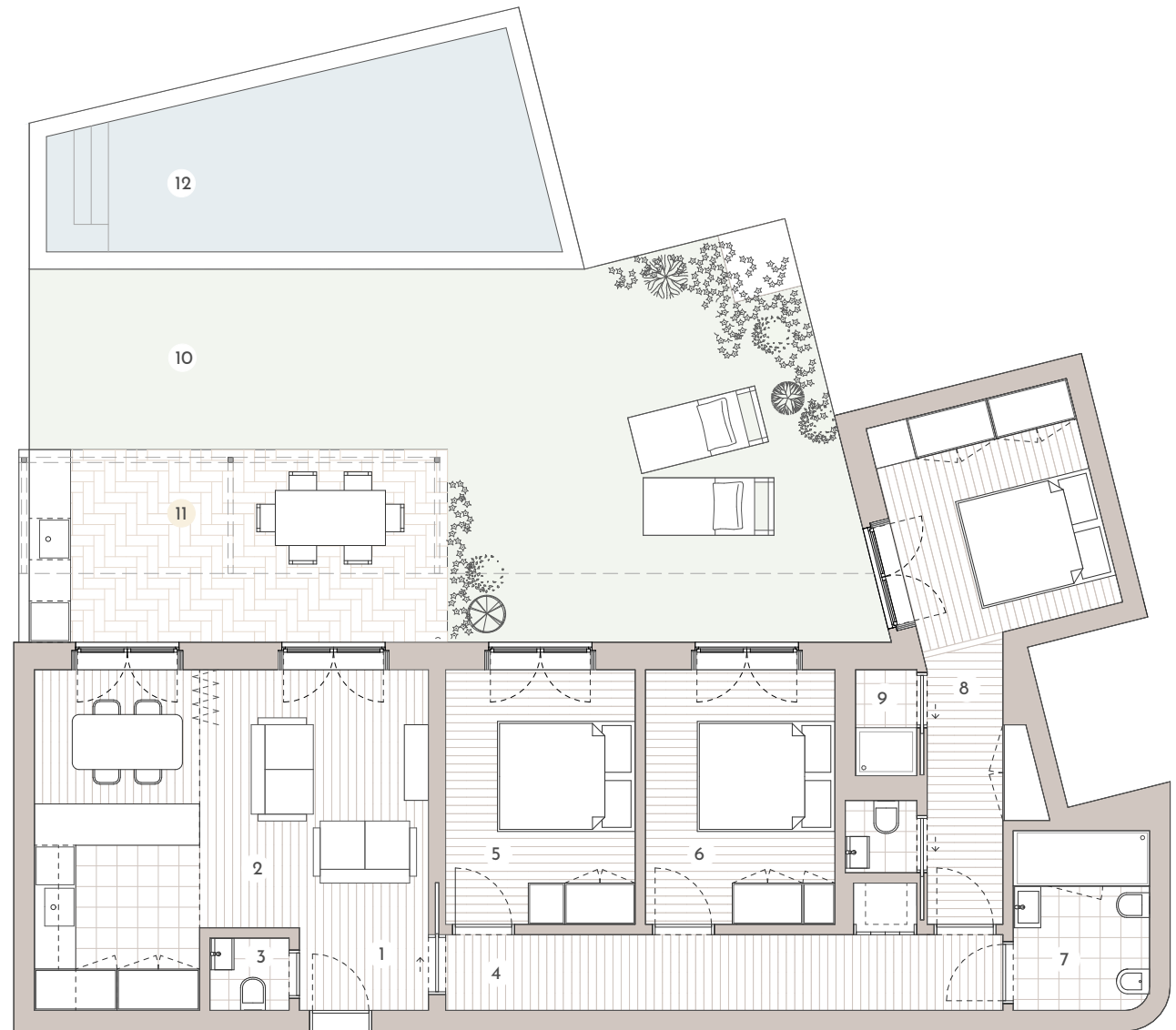
98,75 m² / 1 063 sf

Estacionamento / Parking

1

1 - Átrio / Hall	2,06 m ²
2 - Sala . Cozinha / Living Room . Kitchen	24,20 m ²
3 - I.S. / Bathroom	1,30 m ²
4 - Corredor / Hallway	9,55 m ²
5 - Quarto / Bedroom	10,18 m ²
6 - Quarto / Bedroom	10,18 m ²
7 - I.S. / Bathroom	5,14 m ²
8 - Quarto / Bedroom	15,15 m ²
9 - I.S. / Bathroom	2,57 m ²

10 - Jardim / Garden	48,35 m ²
11 - Terraço / Terrace	17,00 m ²
12 - Piscina / Swimming Pool	22,90 m ²



Estes desenhos são meramente indicativos e não têm carácter contratual, podendo sofrer alterações.
These drawings are merely indicative and are not legally binding. Changes may occur.