

T3 duplex

Piso 1 / 2

First Floor / Second Floor

G

Área Bruta Privativa
Gross Private Area

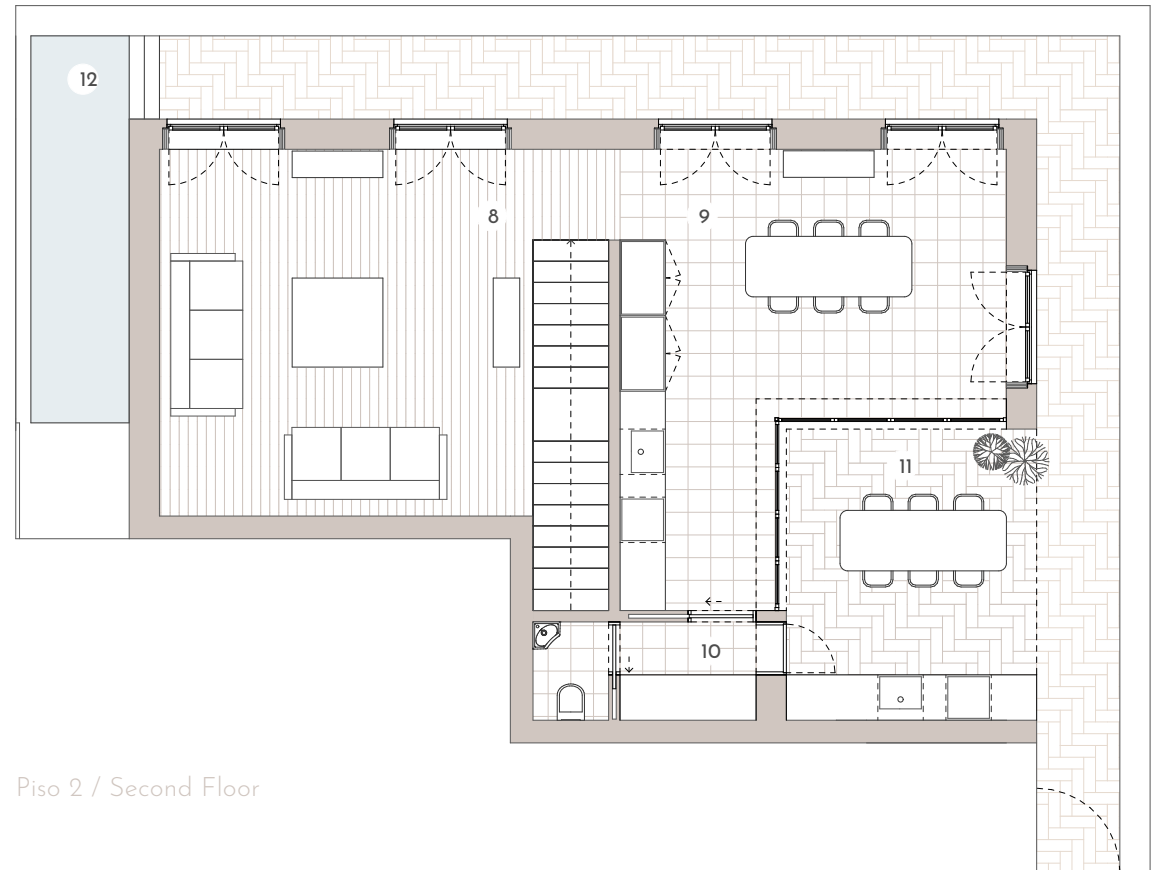
166,55m² / 1 793 sf

Estacionamento / Parking
2



Piso 1 / First Floor

1 - Átrio / Hall	8,89 m ²
2 - Quarto / Bedroom	14,82 m ²
3 - I.S. / Bathroom	2,28 m ²
4 - Quarto / Bedroom	14,34 m ²
5 - I.S. / Bathroom	3,85 m ²
6 - Quarto / Bedroom	16,33 m ²
7 - I.S. / Bathroom	5,20 m ²



Piso 2 / Second Floor

8 - Sala / Living room	24,79 m ²
9 - Cozinha / Kitchen	23,37 m ²
10 - I.S. . Lavandaria / Bathroom . Laundry	3,64 m ²
11 - Terraço / Terrace	35,73 m ²
12 - Piscina / Swimming Pool	6,65 m ²



Estes desenhos são meramente indicativos e não têm carácter contratual, podendo sofrer alterações.
These drawings are merely indicative and are not legally binding. Changes may occur.