

803A APARTMENT T2 DUPLEX (T1+1) PLOT 118 - TOURIST APARTMENTS

- 1 Bedroom
- 2 Bathrooms
- 1 Office Room
- 2 Parking Spaces
- 1 Storage Area



APPROXIMATE AREAS

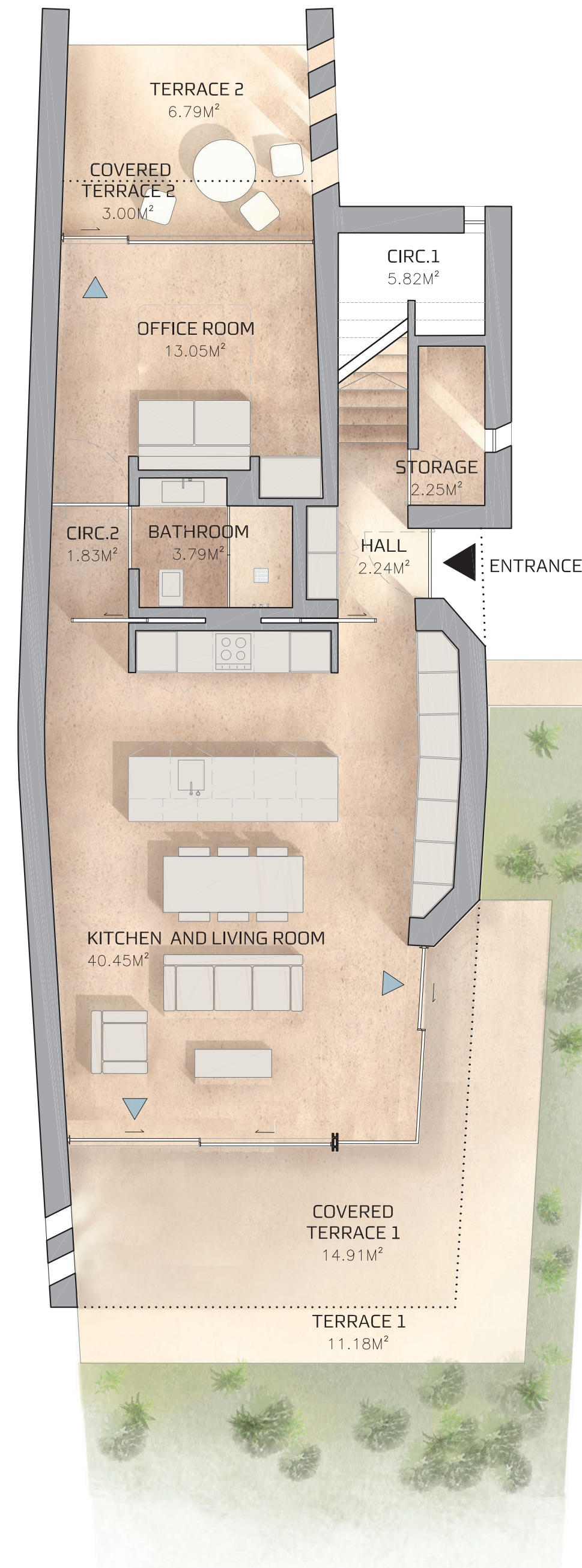
| | |
|--------------------|-----------------------|
| Internal Area | 125.55 m ² |
| Covered Terraces | 25.15 m ² |
| Total Private Area | 150.70 m ² |
| Terraces | 23.25 m ² |

Signature apartments by

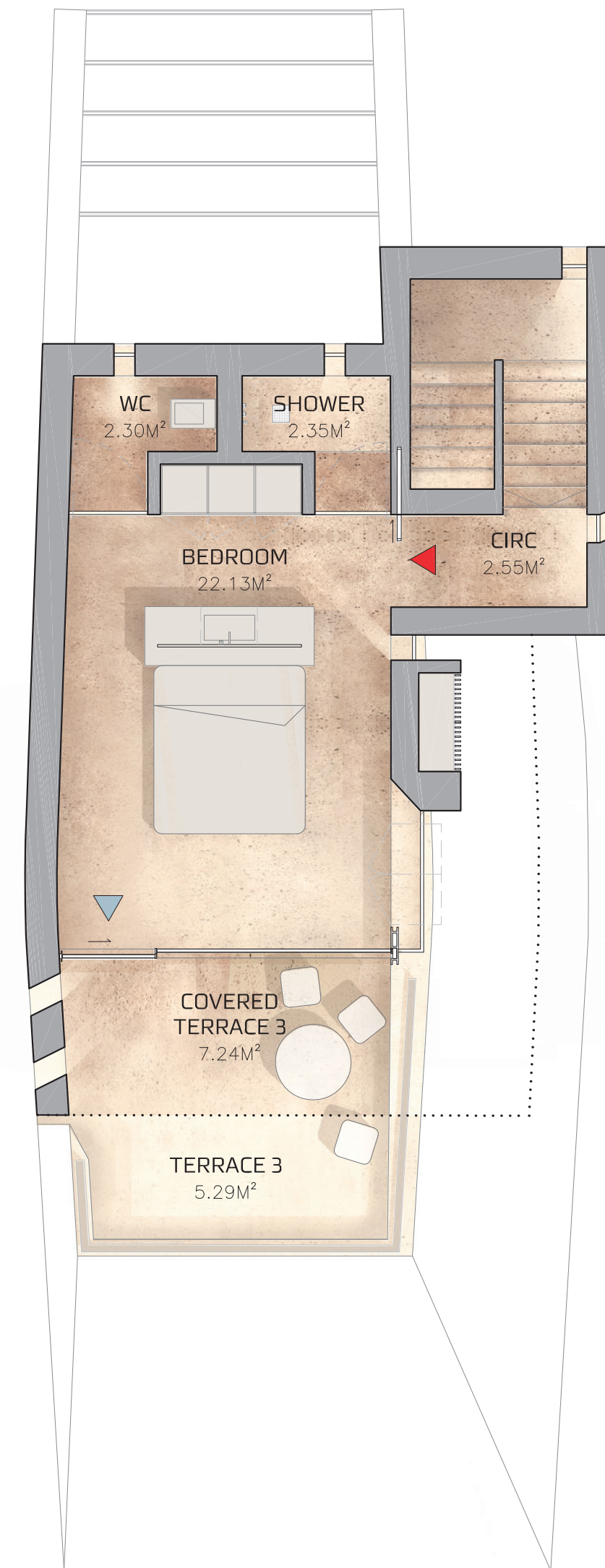
RCR ARQUITECTES

PHASE II (PLOT 118)

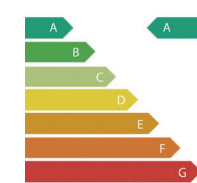
KRONOSHOMES



Entrance Floor Plan



Upper Floor Plan



"Images and plans are representative of the unit type and are non-binding. The apartment/fraction may be subject to changes resulting from technical, legal or administrative requirements, either within the scope of the licensing process or within the scope of the project and construction development. All decorative and furniture elements are merely indicative"