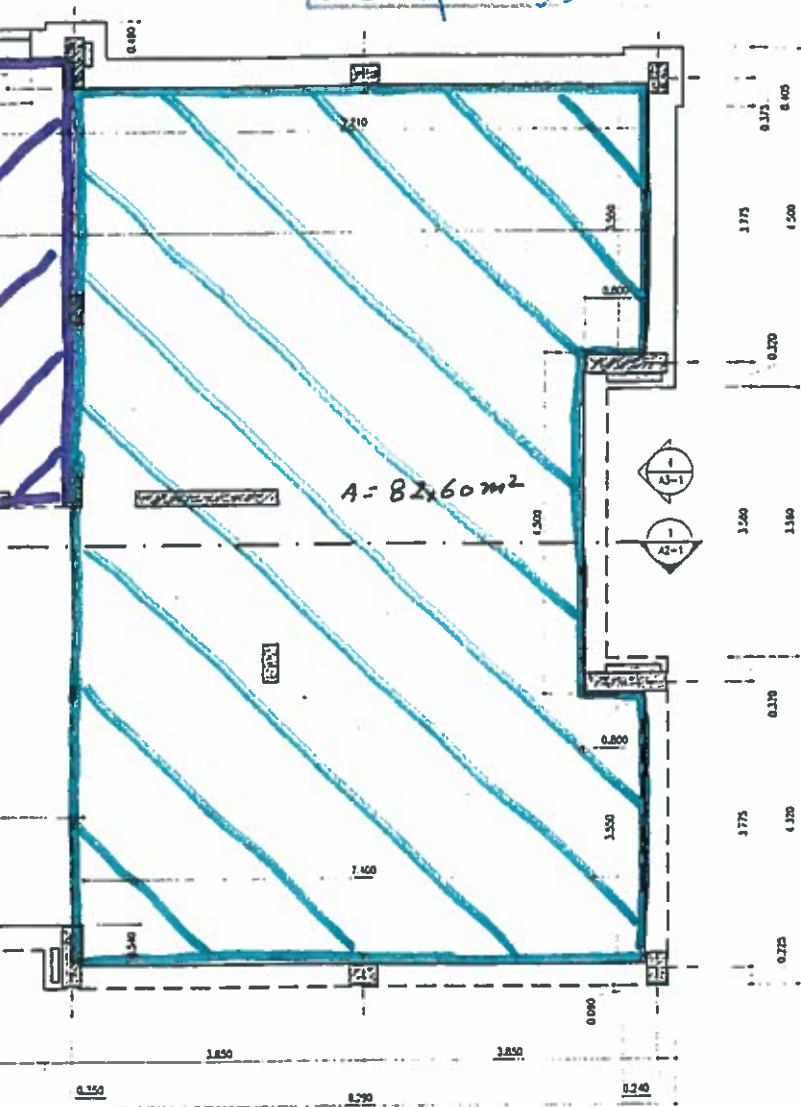


DE VENTILAÇÃO DA GARAGEM COM 0,30m DE ALTURA

C. M. CASTRO MARIM  
ENTRADA

7,650 0,410 0,370 1,440 0,450 0,330  
4-9-00

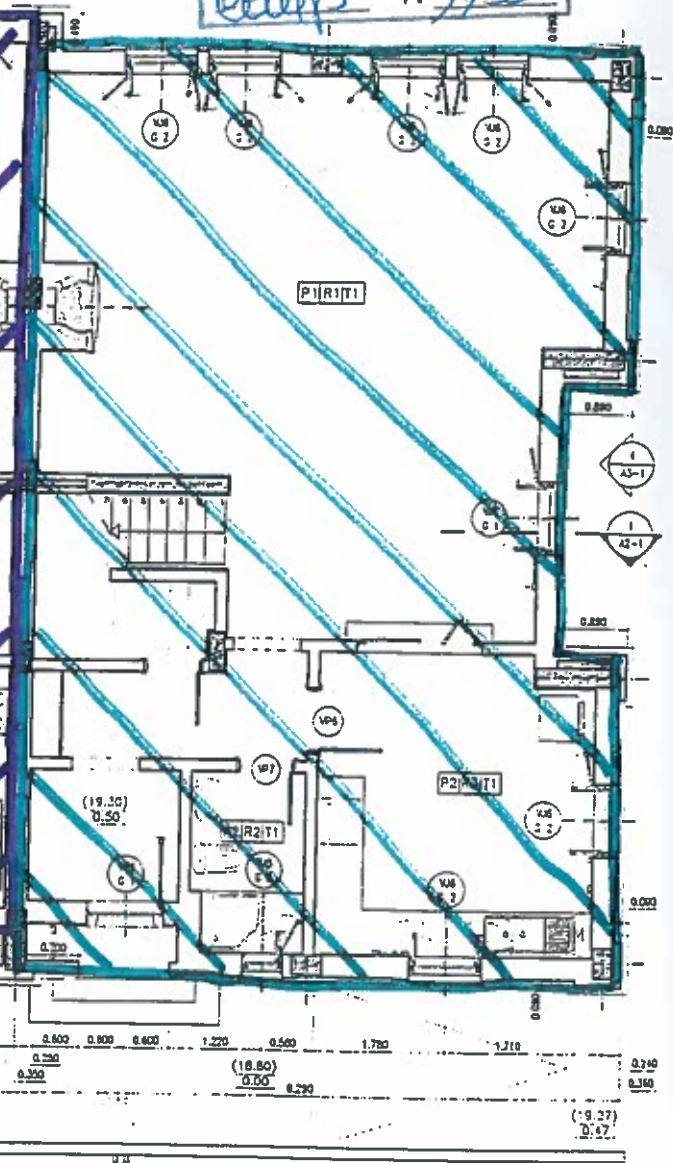
Recibo Nº 2152

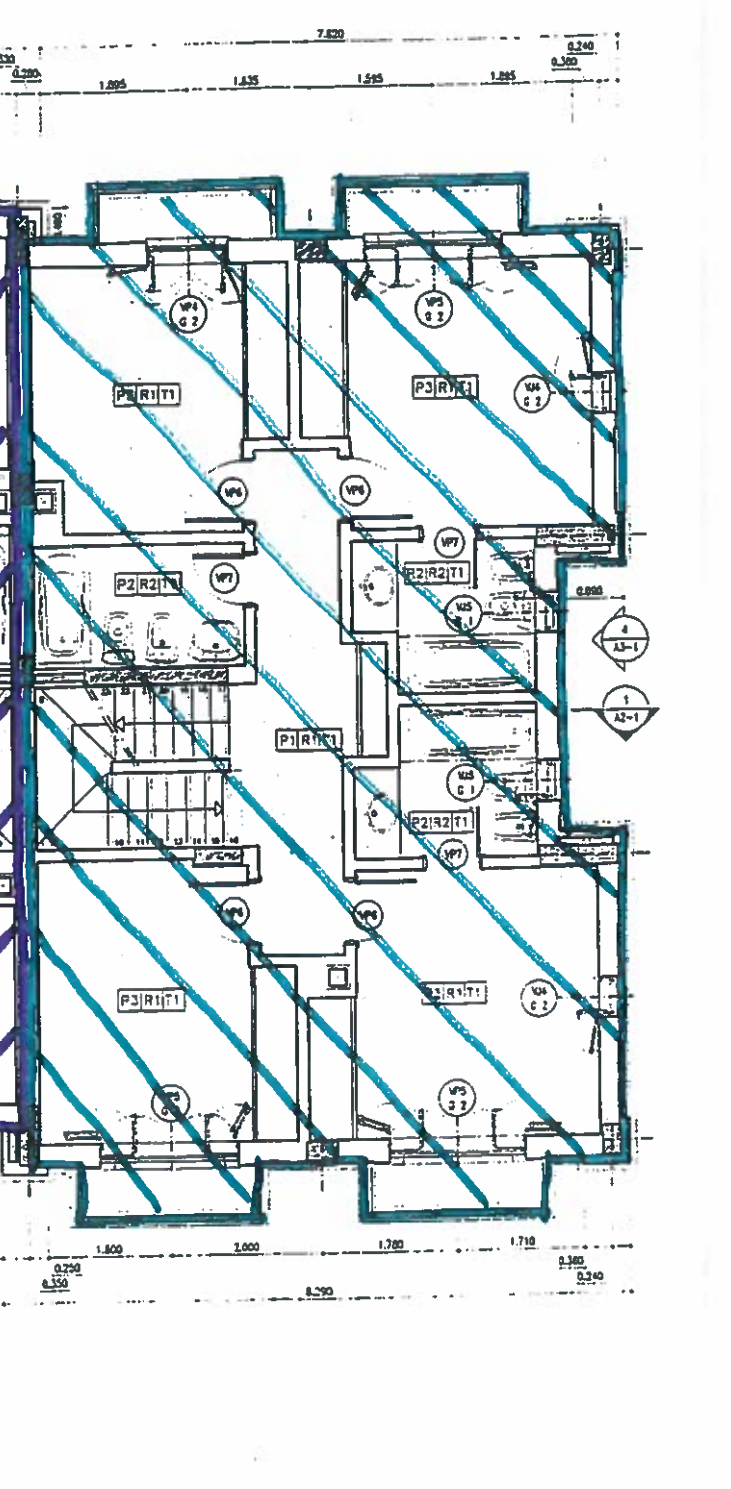


C. M. CASTRO MARIM  
ENTRADA

4-9-00

Obra Nº 1152

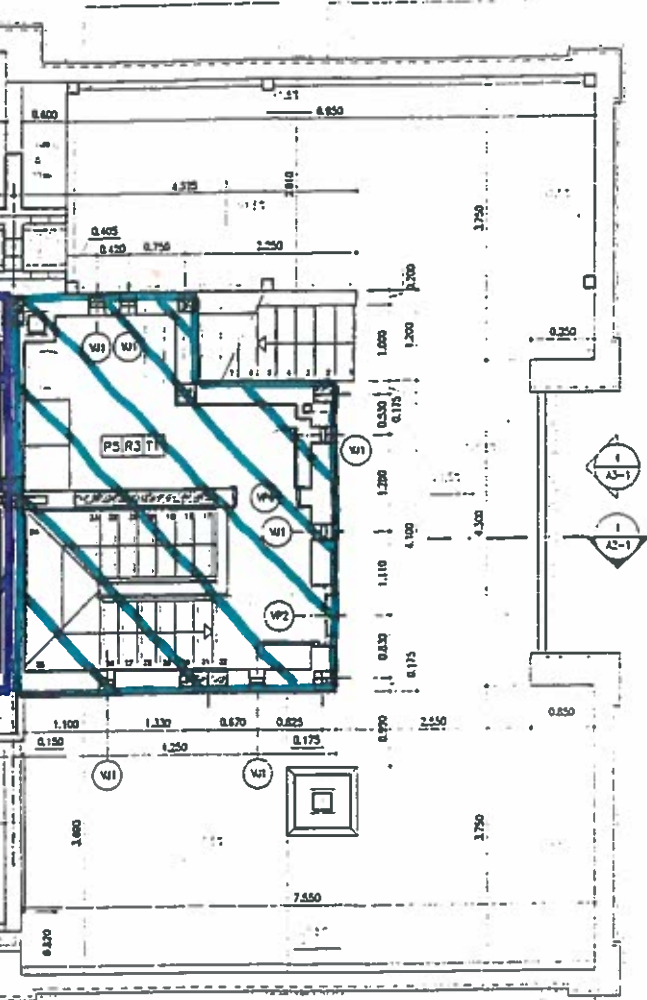




ENTRADA

4-9-00

Obra 2152



C. M. CASTRO MARIM  
ENTRADA  
4-9-00  
Recibo N<sup>o</sup> 1152

