



QUINTA DE FARO
— PRIVATE LUXURY VILLAS —
ALGARVE



Kitchen equipment is not contractual. Their position is indicative. Dimensions and areas are given subject to technical construction and execution requirements.
The fallout from false ceilings, soffits and pipes are not systematically shown.
The thickness of the insulation will be determined by the technical execution study and therefore the data in this plan are only indicative.

Co-Developer :

MJ Développement
55 Avenue d'Espagne
64600 ANGLET - FRANCE
Tel: +33 5 59 03 13 00

MJ DÉVELOPPEMENT
PROMOTEUR CONSTRUCTEUR

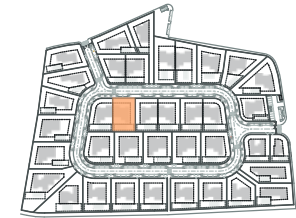
Serip Groupe
2, avenue de la Liberté
83120 Sainte-Maxime - FRANCE

SERIP GROUPE

SALES PLAN

VILLA N°29 DOUBLE STOREY

SITE PLAN



TOTAL INTERIOR LIVING AREA 349.6 m²

GROUND FLOOR 166.4 m²

Living	40.9 m ²
Dining room	17.2 m ²
Kitchen	14.4 m ²
Office	6.2 m ²
Storeroom Pantry	5.1 m ²
Ensuite Bedroom 1	20.5 m ²
Bedroom 1 Dressing	2.8 m ²
Ensuite Bedroom 2	26.7 m ²
Bedroom 2 Dressing	4.4 m ²
Ensuite Bedroom 3	20.8 m ²
Guest toilet	1.9 m ²
Lobby Entrance Hall	5.5 m ²

BASEMENT 183.2 m²

Ensuite Bedroom 4	18.3 m ²
Hallway	17.2 m ²
Laundry	6.9 m ²
Gym, Hammam	21.6 m ²
Wine Cellar	10.1 m ²
Garage	88.2 m ²
Technical room swim Pool	20.9 m ²

TOTAL EXTERIOR AREA 155.1 m²

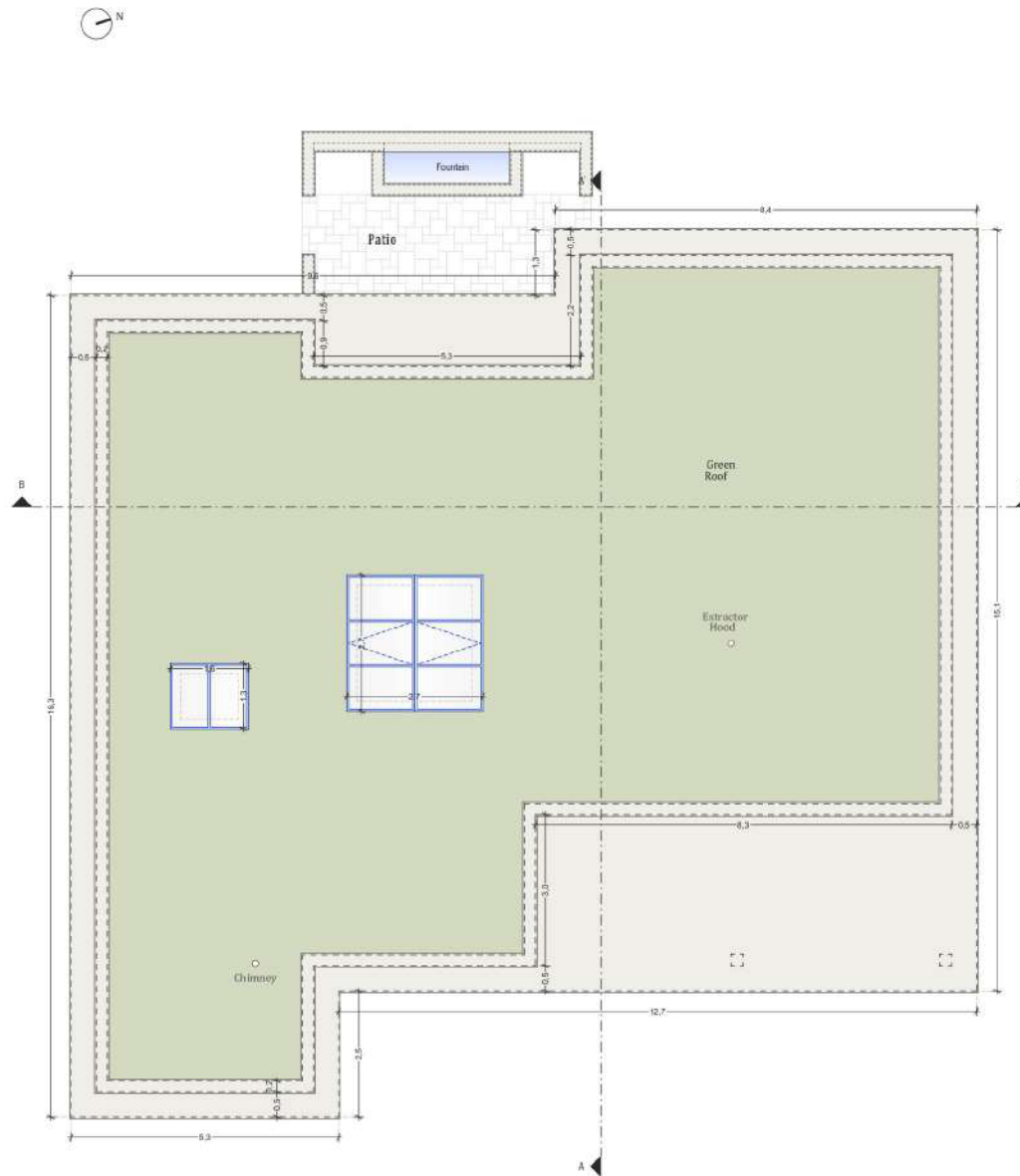
Patio/Fountain	22.7 m ²
Covered terrace	24.6 m ²
Pool Deck	58.7 m ²
Swimming pool	49.1 m ²

TOTAL AREA 504.7 m²

Plot of Land	791.3 m ²
Altmetry	15,9



QUINTA DE FARO
— PRIVATE LUXURY VILLAS —
ALGARVE



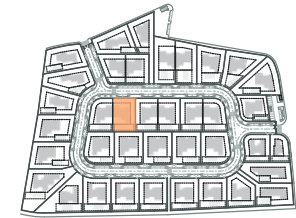
Planta de Cobertura

Kitchen equipment is not contractual. Their position is indicative. Dimensions and areas are given subject to technical construction and execution requirements.
The fallout from false ceilings, soffits and pipes are not systematically shown.
The thickness of the insulation will be determined by the technical execution study and therefore the data in this plan are only indicative.

SALES PLAN

VILLA N°29 DOUBLE STOREY

FLOOR COVERING PLAN



TOTAL INTERIOR LIVING AREA 349.6 m²

GROUND FLOOR 166.4 m²

Living	40.9 m ²
Dining room	17.2 m ²
Kitchen	14.4 m ²
Office	6.2 m ²
Storeroom Pantry	5.1 m ²
Ensuite Bedroom 1	20.5 m ²
Bedroom 1 Dressing	2.8 m ²
Ensuite Bedroom 2	26.7 m ²
Bedroom 2 Dressing	4.4 m ²
Ensuite Bedroom 3	20.8 m ²
Guest toilet	1.9 m ²
Lobby Entrance Hall	5.5 m ²

BASEMENT 183.2 m²

Ensuite Bedroom 4	18.3 m ²
Hallway	17.2 m ²
Laundry	6.9 m ²
Gym, Hammam	21.6 m ²
Wine Cellar	10.1 m ²
Garage	88.2 m ²
Technical room swim Pool	20.9 m ²

TOTAL EXTERIOR AREA 155.1 m²

Patio/Fountain	22.7 m ²
Covered terrace	24.6 m ²
Pool Deck	58.7 m ²
Swimming pool	49.1 m ²

TOTAL AREA 504.7 m²

Plot of Land	791.3 m ²
Altmetry	15,9

MJ Développement
55 Avenue d'Espagne
64600 ANGLET - FRANCE
Tel: +33 5 59 03 13 00

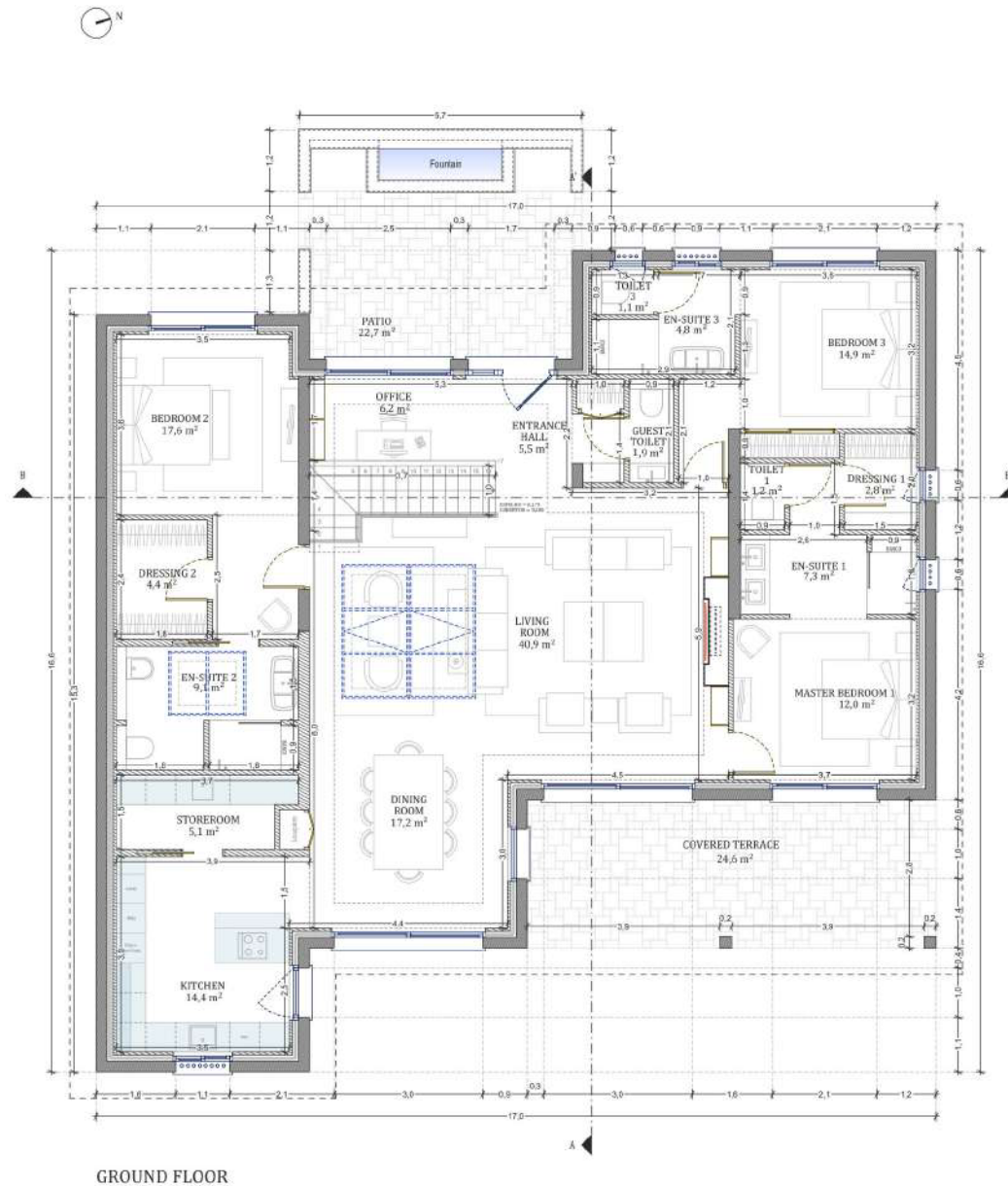
MJ DÉVELOPPEMENT
PROMOTEUR CONSTRUCTEUR

Serip Groupe
2, avenue de la Liberté
83120 Sainte-Maxime - FRANCE


SERIP GROUPE



QUINTA DE FARO
— PRIVATE LUXURY VILLAS —
ALGARVE



Kitchen equipment is not contractual. Their position is indicative. Dimensions and areas are given subject to technical construction and execution requirements.
The fallout from false ceilings, soffits and pipes are not systematically shown.
The thickness of the insulation will be determined by the technical execution study and therefore the data in this plan are only indicative.

MJ Développement
55 Avenue d'Espagne
64600 ANGLET - FRANCE
Tel: +33 5 59 03 13 00

MJ DÉVELOPPEMENT
PROMOTEUR CONSTRUCTEUR

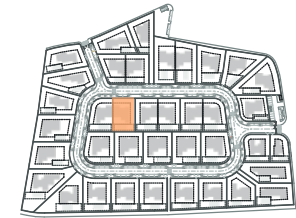
Serip Groupe
2, avenue de la Liberté
83120 Sainte-Maxime - FRANCE


SERIP GROUPE

SALES PLAN

VILLA N°29 DOUBLE STOREY

GROUND FLOOR



TOTAL INTERIOR LIVING AREA 349.6 m²

GROUND FLOOR 166.4 m²

Living	40.9 m ²
Dining room	17.2 m ²
Kitchen	14.4 m ²
Office	6.2 m ²
Storeroom Pantry	5.1 m ²
Ensuite Bedroom 1	20.5 m ²
Bedroom 1 Dressing	2.8 m ²
Ensuite Bedroom 2	26.7 m ²
Bedroom 2 Dressing	4.4 m ²
Ensuite Bedroom 3	20.8 m ²
Guest toilet	1.9 m ²
Lobby Entrance Hall	5.5 m ²

BASEMENT 183.2 m²

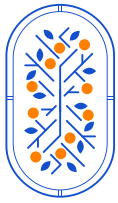
Ensuite Bedroom 4	18.3 m ²
Hallway	17.2 m ²
Laundry	6.9 m ²
Gym, Hammam	21.6 m ²
Wine Cellar	10.1 m ²
Garage	88.2 m ²
Technical room swim Pool	20.9 m ²

TOTAL EXTERIOR AREA 155.1 m²

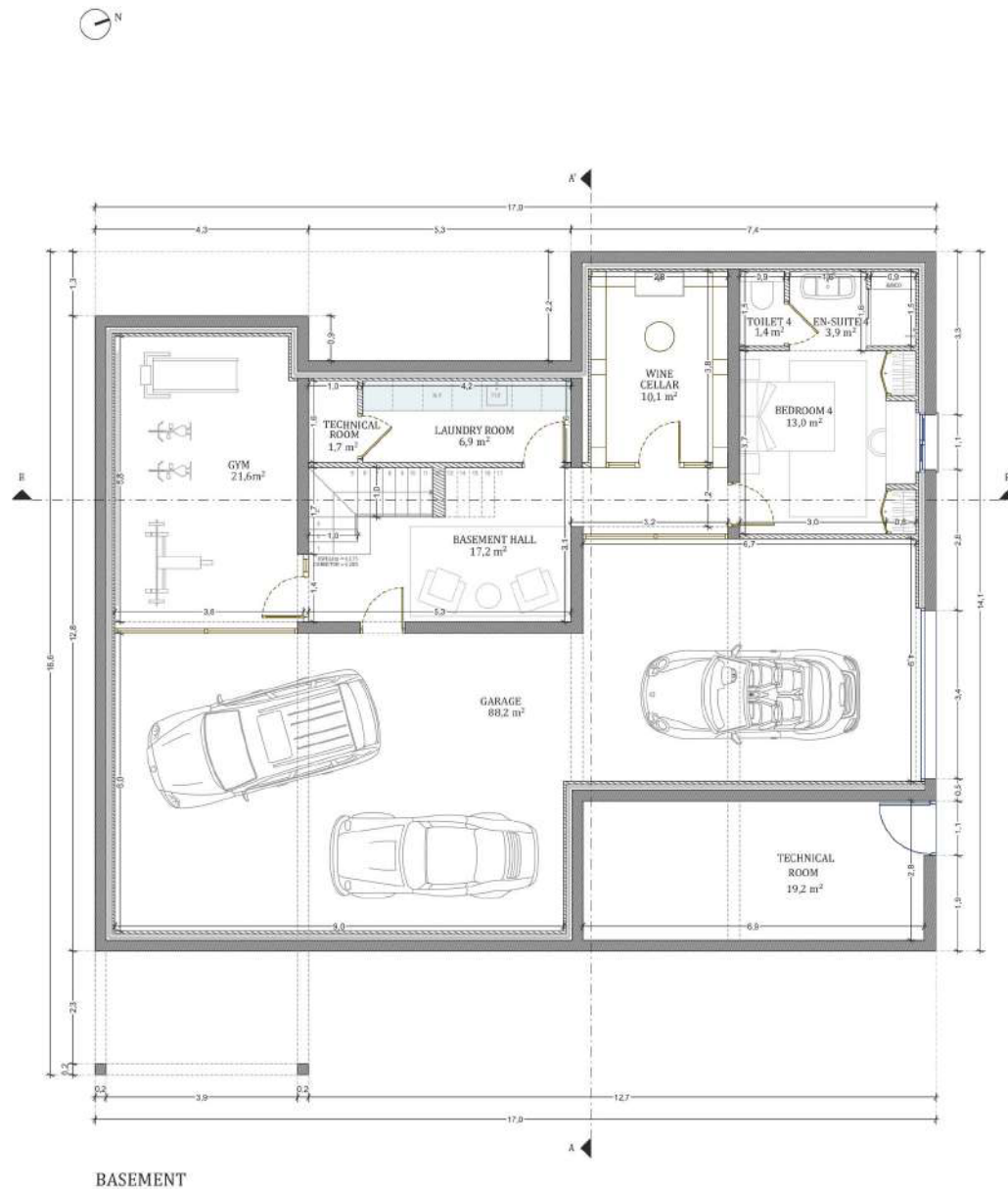
Patio/Fountain	22.7 m ²
Covered terrace	24.6 m ²
Pool Deck	58.7 m ²
Swimming pool	49.1 m ²

TOTAL AREA 504.7 m²

Plot of Land	791.3 m ²
Altimetry	15,9



QUINTA DE FARO
— PRIVATE LUXURY VILLAS —
ALGARVE



Kitchen equipment is not contractual. Their position is indicative. Dimensions and areas are given subject to technical construction and execution requirements.
The fallout from false ceilings, soffits and pipes are not systematically shown.
The thickness of the insulation will be determined by the technical execution study and therefore the data in this plan are only indicative.

MJ Développement
55 Avenue d'Espagne
64600 ANGLET - FRANCE
Tel: +33 5 59 03 13 00

MJ DÉVELOPPEMENT
PROMOTEUR CONSTRUCTEUR

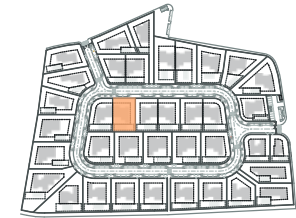
Serip Groupe
2, avenue de la Liberté
83120 Sainte-Maxime - FRANCE


SERIP GROUPE

SALES PLAN

VILLA N°29 DOUBLE STOREY

BASEMENT



TOTAL INTERIOR LIVING AREA 349.6 m²

GROUND FLOOR 166.4 m²

Living	40.9 m ²
Dining room	17.2 m ²
Kitchen	14.4 m ²
Office	6.2 m ²
Storeroom Pantry	5.1 m ²
Ensuite Bedroom 1	20.5 m ²
Bedroom 1 Dressing	2.8 m ²
Ensuite Bedroom 2	26.7 m ²
Bedroom 2 Dressing	4.4 m ²
Ensuite Bedroom 3	20.8 m ²
Guest toilet	1.9 m ²
Lobby Entrance Hall	5.5 m ²

BASEMENT 183.2 m²

Ensuite Bedroom 4	18.3 m ²
Hallway	17.2 m ²
Laundry	6.9 m ²
Gym, Hammam	21.6 m ²
Wine Cellar	10.1 m ²
Garage	88.2 m ²
Technical room swim Pool	20.9 m ²

TOTAL EXTERIOR AREA 155.1 m²

Patio/Fountain	22.7 m ²
Covered terrace	24.6 m ²
Pool Deck	58.7 m ²
Swimming pool	49.1 m ²

TOTAL AREA 504.7 m²

Plot of Land	791.3 m ²
Altimetry	15,9



QUINTA DE FARO
— PRIVATE LUXURY VILLAS —
ALGARVE



SECTION AA'



SECTION BB'

Kitchen equipment is not contractual. Their position is indicative. Dimensions and areas are given subject to technical construction and execution requirements. The fallout from false ceilings, soffits and pipes are not systematically shown.
The thickness of the insulation will be determined by the technical execution study and therefore the data in this plan are only indicative.

MJ Développement
55 Avenue d'Espagne
64600 ANGLET - FRANCE
Tel: +33 5 59 03 13 00

MJ DÉVELOPPEMENT
PROMOTEUR CONSTRUCTEUR

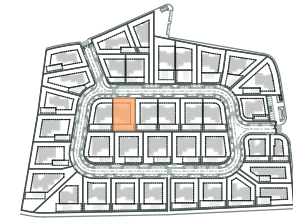
Serip Groupe
2, avenue de la Liberté
83120 Sainte-Maxime - FRANCE


SERIP GROUPE

SALES PLAN

VILLA N°29 DOUBLE STOREY

SECTIONAL PLAN



TOTAL INTERIOR LIVING AREA 349.6 m²

GROUND FLOOR 166.4 m²

Living	40.9 m ²
Dining room	17.2 m ²
Kitchen	14.4 m ²
Office	6.2 m ²
Storeroom Pantry	5.1 m ²
Ensuite Bedroom 1	20.5 m ²
Bedroom 1 Dressing	2.8 m ²
Ensuite Bedroom 2	26.7 m ²
Bedroom 2 Dressing	4.4 m ²
Ensuite Bedroom 3	20.8 m ²
Guest toilet	1.9 m ²
Lobby Entrance Hall	5.5 m ²

BASEMENT 183.2 m²

Ensuite Bedroom 4	18.3 m ²
Hallway	17.2 m ²
Laundry	6.9 m ²
Gym, Hammam	21.6 m ²
Wine Cellar	10.1 m ²
Garage	88.2 m ²
Technical room swim Pool	20.9 m ²

TOTAL EXTERIOR AREA 155.1 m²

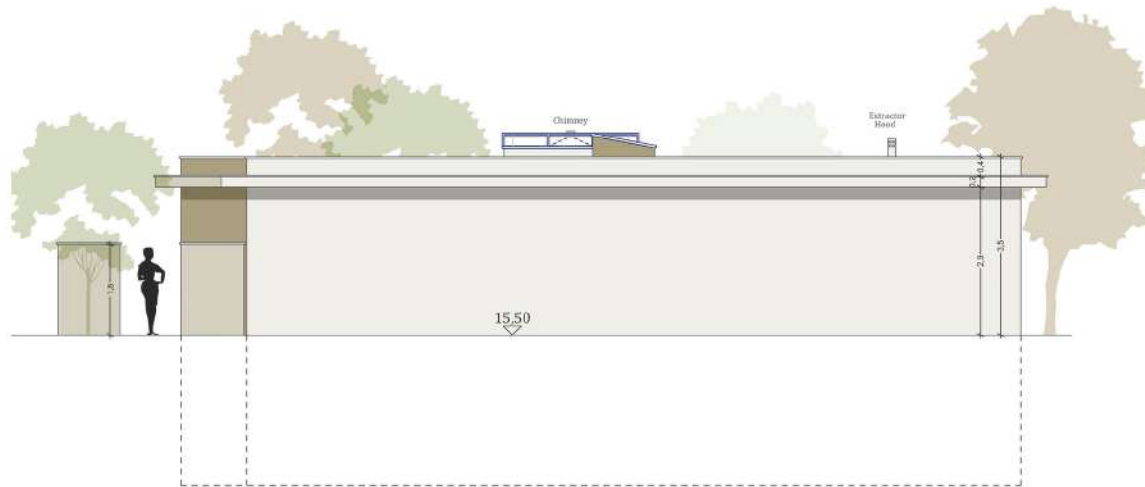
Patio/Fountain	22.7 m ²
Covered terrace	24.6 m ²
Pool Deck	58.7 m ²
Swimming pool	49.1 m ²

TOTAL AREA 504.7 m²

Plot of Land	791.3 m ²
Altmetry	15,9



QUINTA DE FARO
— PRIVATE LUXURY VILLAS —
ALGARVE



SOUTH



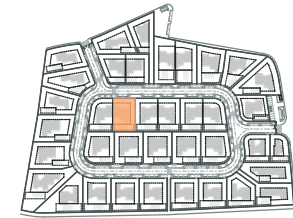
WEST

Kitchen equipment is not contractual. Their position is indicative. Dimensions and areas are given subject to technical construction and execution requirements.
The fallout from false ceilings, soffits and pipes are not systematically shown.
The thickness of the insulation will be determined by the technical execution study and therefore the data in this plan are only indicative.

SALES PLAN

VILLA N°29 DOUBLE STOREY

ELEVATIONS



TOTAL INTERIOR LIVING AREA 349.6 m²

GROUND FLOOR 166.4 m²

Living	40.9 m ²
Dining room	17.2 m ²
Kitchen	14.4 m ²
Office	6.2 m ²
Storeroom Pantry	5.1 m ²
Ensuite Bedroom 1	20.5 m ²
Bedroom 1 Dressing	2.8 m ²
Ensuite Bedroom 2	26.7 m ²
Bedroom 2 Dressing	4.4 m ²
Ensuite Bedroom 3	20.8 m ²
Guest toilet	1.9 m ²
Lobby Entrance Hall	5.5 m ²

BASEMENT 183.2 m²

Ensuite Bedroom 4	18.3 m ²
Hallway	17.2 m ²
Laundry	6.9 m ²
Gym, Hammam	21.6 m ²
Wine Cellar	10.1 m ²
Garage	88.2 m ²
Technical room swim Pool	20.9 m ²

TOTAL EXTERIOR AREA 155.1 m²

Patio/Fountain	22.7 m ²
Covered terrace	24.6 m ²
Pool Deck	58.7 m ²
Swimming pool	49.1 m ²

TOTAL AREA 504.7 m²

Plot of Land	791.3 m ²
Altmetry	15,9

MJ Développement
55 Avenue d'Espagne
64600 ANGLET - FRANCE
Tel: +33 5 59 03 13 00

MJ DÉVELOPPEMENT
PROMOTEUR CONSTRUCTEUR

Serip Groupe
2, avenue de la Liberté
83120 Sainte-Maxime - FRANCE


SERIP GROUPE



QUINTA DE FARO
— PRIVATE LUXURY VILLAS —
ALGARVE



SOUTH



EAST

Kitchen equipment is not contractual. Their position is indicative. Dimensions and areas are given subject to technical construction and execution requirements.
The fallout from false ceilings, soffits and pipes are not systematically shown.
The thickness of the insulation will be determined by the technical execution study and therefore the data in this plan are only indicative.

MJ Développement
55 Avenue d'Espagne
64600 ANGLET - FRANCE
Tel: +33 5 59 03 13 00

MJ DÉVELOPPEMENT
PROMOTEUR CONSTRUCTEUR

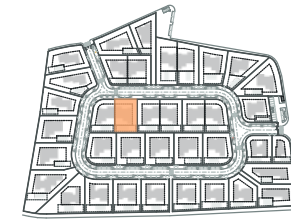
Serip Groupe
2, avenue de la Liberté
83120 Sainte-Maxime - FRANCE


SERIP GROUPE

SALES PLAN

VILLA N°29 DOUBLE STOREY

ELEVATIONS



TOTAL INTERIOR LIVING AREA 349.6 m²

GROUND FLOOR 166.4 m²

Living	40.9 m ²
Dining room	17.2 m ²
Kitchen	14.4 m ²
Office	6.2 m ²
Storeroom Pantry	5.1 m ²
Ensuite Bedroom 1	20.5 m ²
Bedroom 1 Dressing	2.8 m ²
Ensuite Bedroom 2	26.7 m ²
Bedroom 2 Dressing	4.4 m ²
Ensuite Bedroom 3	20.8 m ²
Guest toilet	1.9 m ²
Lobby Entrance Hall	5.5 m ²

BASEMENT 183.2 m²

Ensuite Bedroom 4	18.3 m ²
Hallway	17.2 m ²
Laundry	6.9 m ²
Gym, Hammam	21.6 m ²
Wine Cellar	10.1 m ²
Garage	88.2 m ²
Technical room swim Pool	20.9 m ²

TOTAL EXTERIOR AREA 155.1 m²

Patio/Fountain	22.7 m ²
Covered terrace	24.6 m ²
Pool Deck	58.7 m ²
Swimming pool	49.1 m ²

TOTAL AREA 504.7 m²

Plot of Land	791.3 m ²
Altimetry	15,9