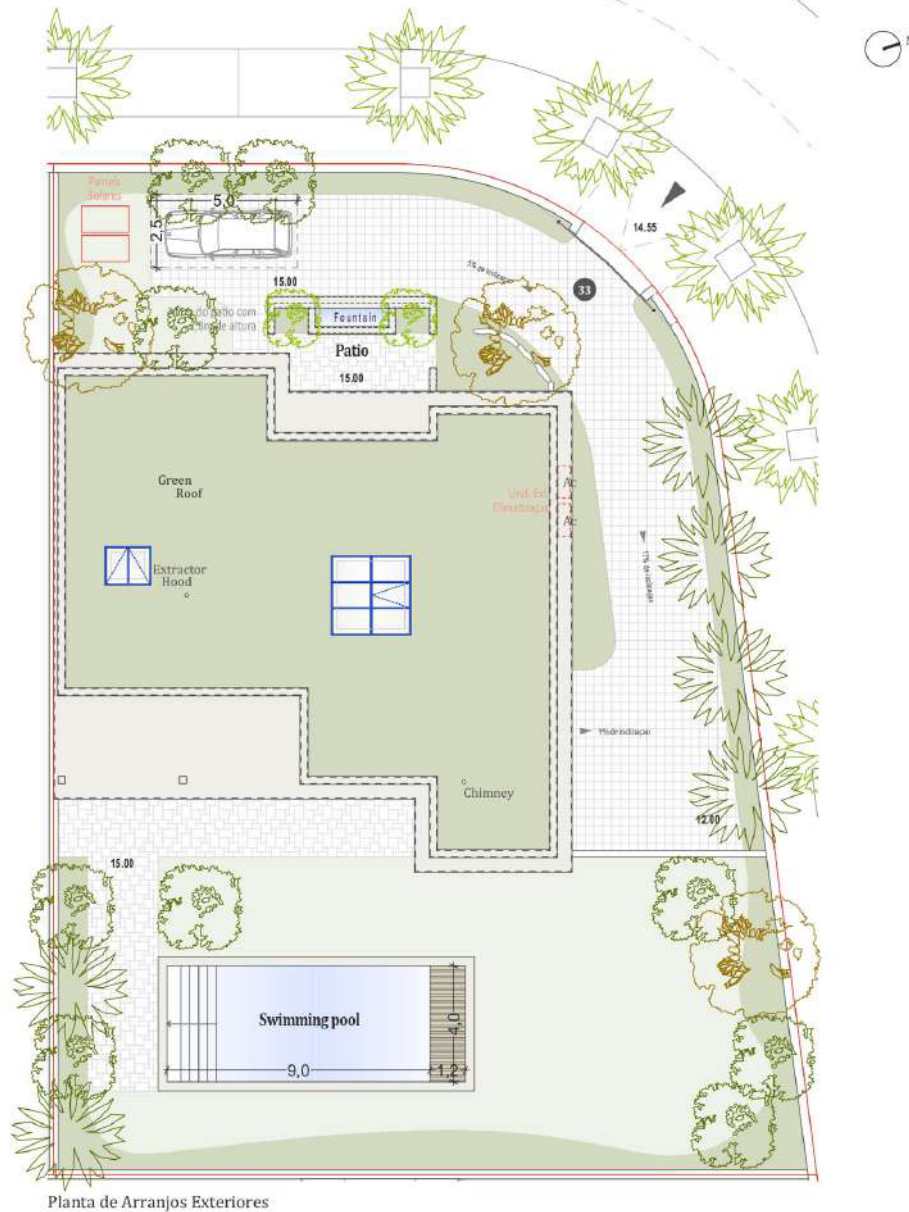




**QUINTA DE FARO**  
PRIVATE LUXURY VILLAS  
ALGARVE



Kitchen equipment is not contractual. Their position is indicative. Dimensions and areas are given subject to technical construction and execution requirements. The fallout from false ceilings, soffits and pipes are not systematically shown. The thickness of the insulation will be determined by the technical execution study and therefore the data in this plan are only indicative.

Co-Developer :

MJ Développement  
55 Avenue d'Espagne  
64600 ANGLÈT - FRANCE  
Tel: +33 5 59 03 13 00

**MJ** DÉVELOPPEMENT  
PROMOTEUR CONSTRUCTEUR

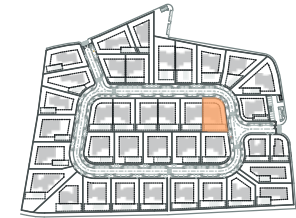
Serip Groupe  
2, avenue de la Liberté  
83120 Sainte-Maxime - FRANCE

  
**SERIP GROUPE**

## SALES PLAN

VILLA N°33 DOUBLE STOREY

SITE PLAN



**TOTAL INTERIOR LIVING AREA 347.5 m<sup>2</sup>**

**GROUND FLOOR 165.3 m<sup>2</sup>**

Living	40.9 m <sup>2</sup>
Dining room	17.2 m <sup>2</sup>
Kitchen	14.4 m <sup>2</sup>
Office	6.2 m <sup>2</sup>
Storeroom Pantry	5.1 m <sup>2</sup>
Ensuite Bedroom 1	20.5 m <sup>2</sup>
Bedroom 1 Dressing	2.8 m <sup>2</sup>
Ensuite Bedroom 2	26.7 m <sup>2</sup>
Bedroom 2 Dressing	4.4 m <sup>2</sup>
Ensuite Bedroom 3	19.7 m <sup>2</sup>
Guest toilet	1.9 m <sup>2</sup>
Hallway	5.5 m <sup>2</sup>

**BASEMENT 182.2 m<sup>2</sup>**

Ensuite Bedroom 4	20.5 m <sup>2</sup>
Hallway	17.1 m <sup>2</sup>
Laundry	9.5 m <sup>2</sup>
Gym, Hammam	36.9 m <sup>2</sup>
Wine Cellar	12.9 m <sup>2</sup>
Garage	74.8 m <sup>2</sup>
Technical room swim Pool	10.5 m <sup>2</sup>

**TOTAL EXTERIOR AREA 147.1 m<sup>2</sup>**

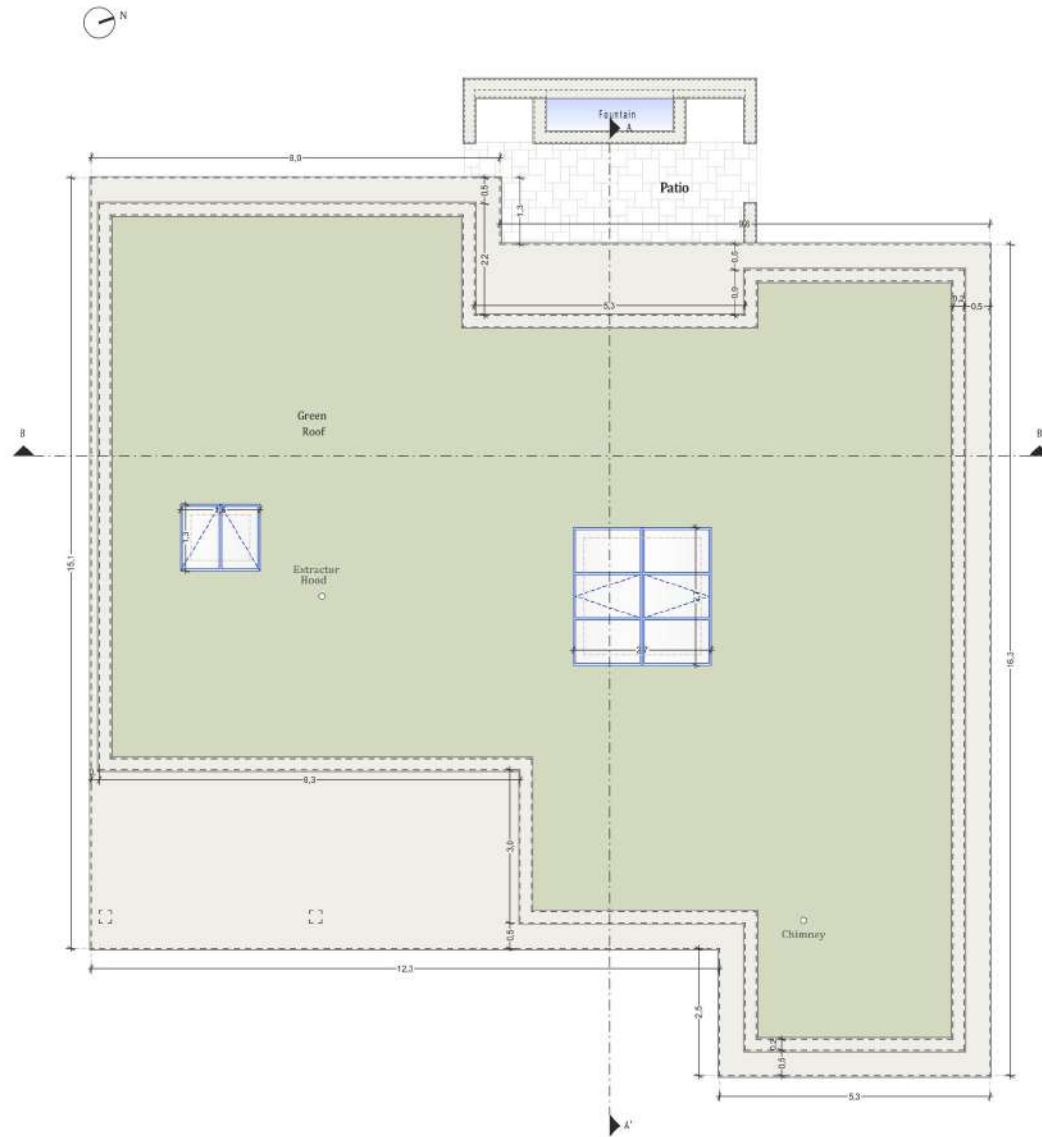
Patio/Fountain	22.7 m <sup>2</sup>
Covered terrace	24.6 m <sup>2</sup>
Pool Deck	50.7 m <sup>2</sup>
Swimming pool	49.1 m <sup>2</sup>

**TOTAL AREA 494.6 m<sup>2</sup>**

Plot of Land	795.5 m <sup>2</sup>
Altimetry	15



**QUINTA DE FARO**  
PRIVATE LUXURY VILLAS  
ALGARVE



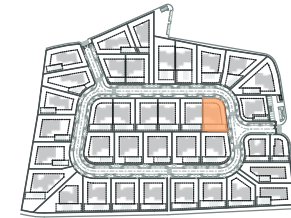
Planta de Cobertura

Kitchen equipment is not contractual. Their position is indicative. Dimensions and areas are given subject to technical construction and execution requirements.  
The fallout from false ceilings, soffits and pipes are not systematically shown.  
The thickness of the insulation will be determined by the technical execution study and therefore the data in this plan are only indicative.

## SALES PLAN

VILLA N°33 DOUBLE STOREY

FLOOR COVERING PLAN



**TOTAL INTERIOR LIVING AREA 347.5 m<sup>2</sup>**

**GROUND FLOOR 165.3 m<sup>2</sup>**

Living	40.9 m <sup>2</sup>
Dining room	17.2 m <sup>2</sup>
Kitchen	14.4 m <sup>2</sup>
Office	6.2 m <sup>2</sup>
Storeroom Pantry	5.1 m <sup>2</sup>
Ensuite Bedroom 1	20.5 m <sup>2</sup>
Bedroom 1 Dressing	2.8 m <sup>2</sup>
Ensuite Bedroom 2	26.7 m <sup>2</sup>
Bedroom 2 Dressing	4.4 m <sup>2</sup>
Ensuite Bedroom 3	19.7 m <sup>2</sup>
Guest toilet	1.9 m <sup>2</sup>
Hallway	5.5 m <sup>2</sup>

**BASEMENT 182.2 m<sup>2</sup>**

Ensuite Bedroom 4	20.5 m <sup>2</sup>
Hallway	17.1 m <sup>2</sup>
Laundry	9.5 m <sup>2</sup>
Gym, Hammam	36.9 m <sup>2</sup>
Wine Cellar	12.9 m <sup>2</sup>
Garage	74.8 m <sup>2</sup>
Technical room swim Pool	10.5 m <sup>2</sup>

**TOTAL EXTERIOR AREA 147.1 m<sup>2</sup>**

Patio/Fountain	22.7 m <sup>2</sup>
Covered terrace	24.6 m <sup>2</sup>
Pool Deck	50.7 m <sup>2</sup>
Swimming pool	49.1 m <sup>2</sup>

**TOTAL AREA 494.6 m<sup>2</sup>**

Plot of Land	795.5 m <sup>2</sup>
Altimetry	15

MJ Développement  
55 Avenue d'Espagne  
64600 ANGLÈT - FRANCE  
Tel: +33 5 59 03 13 00

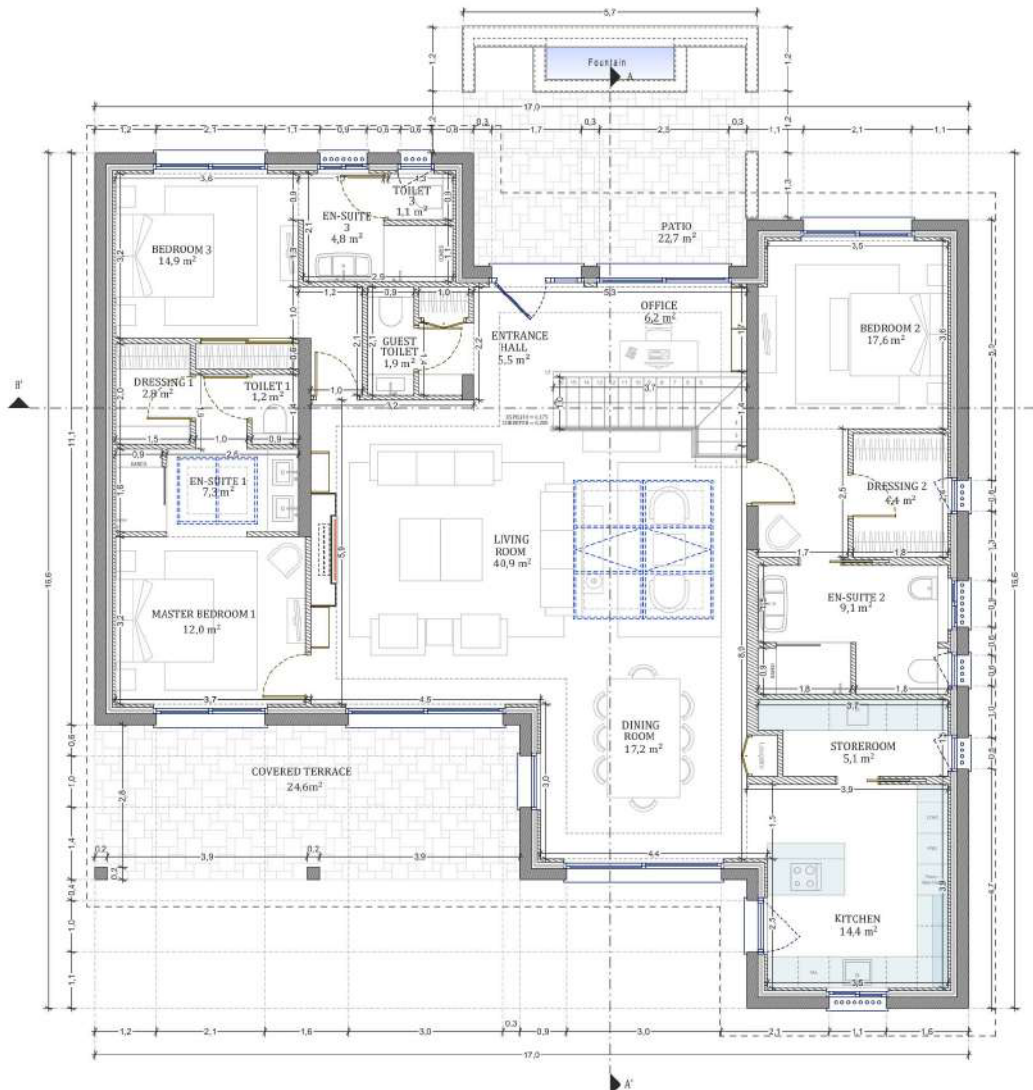
**MJ** DÉVELOPPEMENT  
PROMOTEUR CONSTRUCTEUR

Serip Groupe  
2, avenue de la Liberté  
83120 Sainte-Maxime - FRANCE

  
**SERIP GROUPE**



**QUINTA DE FARO**  
PRIVATE LUXURY VILLAS  
ALGARVE



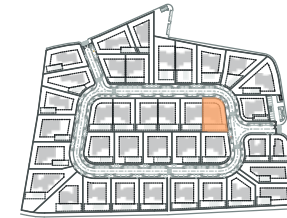
GROUND FLOOR

Kitchen equipment is not contractual. Their position is indicative. Dimensions and areas are given subject to technical construction and execution requirements. The fallout from false ceilings, soffits and pipes are not systematically shown. The thickness of the insulation will be determined by the technical execution study and therefore the data in this plan are only indicative.

## SALES PLAN

VILLA N°33 DOUBLE STOREY

GROUND FLOOR



<b>TOTAL INTERIOR LIVING AREA</b>	<b>347.5 m<sup>2</sup></b>
<b>GROUND FLOOR</b>	<b>165.3 m<sup>2</sup></b>

Living	40.9 m <sup>2</sup>
Dining room	17.2 m <sup>2</sup>
Kitchen	14.4 m <sup>2</sup>
Office	6.2 m <sup>2</sup>
Storeroom Pantry	5.1 m <sup>2</sup>
Ensuite Bedroom 1	20.5 m <sup>2</sup>
Bedroom 1 Dressing	2.8 m <sup>2</sup>
Ensuite Bedroom 2	26.7 m <sup>2</sup>
Bedroom 2 Dressing	4.4 m <sup>2</sup>
Ensuite Bedroom 3	19.7 m <sup>2</sup>
Guest toilet	1.9 m <sup>2</sup>
Hallway	5.5 m <sup>2</sup>

<b>BASEMENT</b>	<b>182.2 m<sup>2</sup></b>
-----------------	----------------------------

Ensuite Bedroom 4	20.5 m <sup>2</sup>
Hallway	17.1 m <sup>2</sup>
Laundry	9.5 m <sup>2</sup>
Gym, Hammam	36.9 m <sup>2</sup>
Wine Cellar	12.9 m <sup>2</sup>
Garage	74.8 m <sup>2</sup>
Technical room swim Pool	10.5 m <sup>2</sup>

<b>TOTAL EXTERIOR AREA</b>	<b>147.1 m<sup>2</sup></b>
----------------------------	----------------------------

Patio/Fountain	22.7 m <sup>2</sup>
Covered terrace	24.6 m <sup>2</sup>
Pool Deck	50.7 m <sup>2</sup>
Swimming pool	49.1 m <sup>2</sup>

<b>TOTAL AREA</b>	<b>494.6 m<sup>2</sup></b>
-------------------	----------------------------

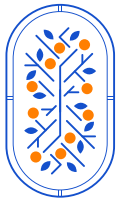
Plot of Land	795.5 m <sup>2</sup>
Altimetry	15

MJ Développement  
55 Avenue d'Espagne  
64600 ANGLET - FRANCE  
Tel: +33 5 59 03 13 00

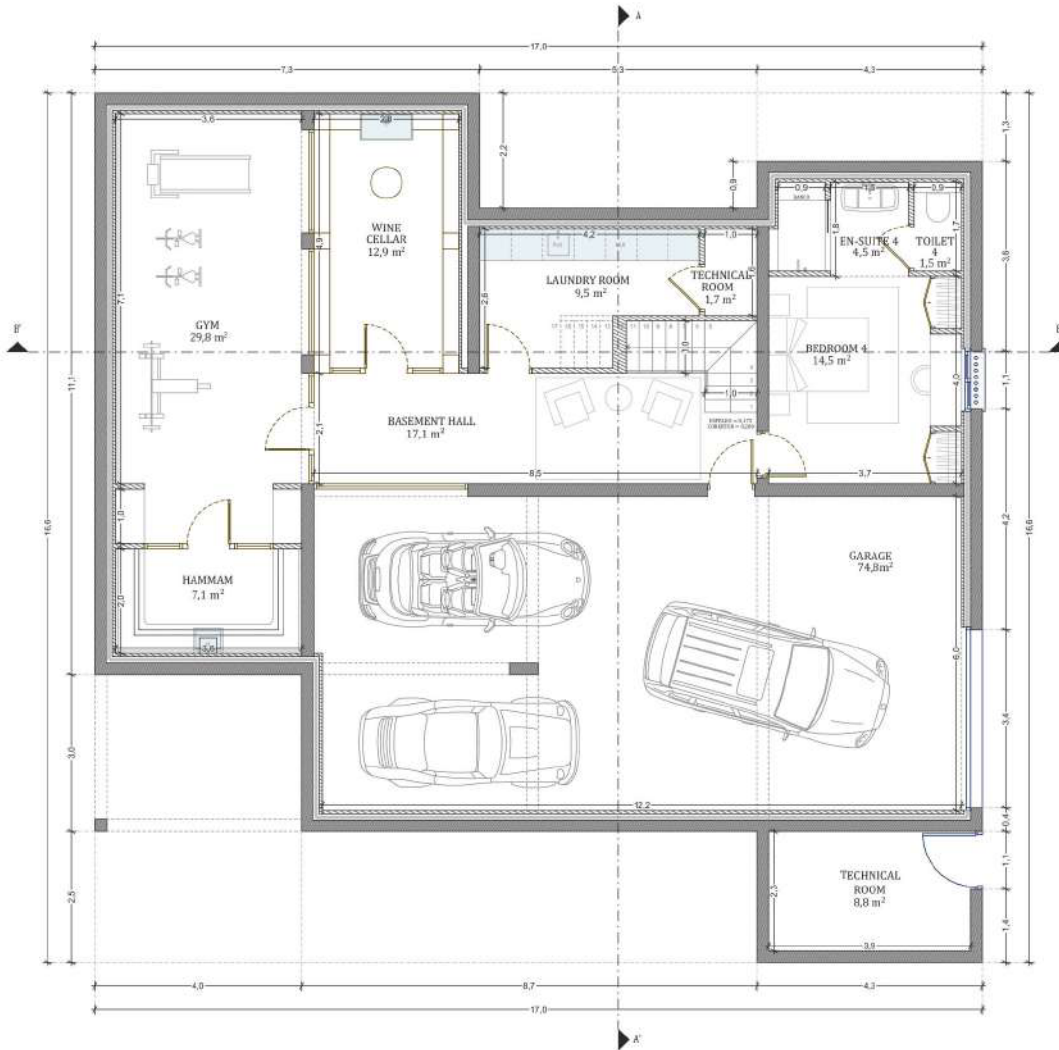
**MJ** DÉVELOPPEMENT  
PROMOTEUR CONSTRUCTEUR

Serip Groupe  
2, avenue de la Liberté  
83120 Sainte-Maxime - FRANCE

  
**SERIP GROUPE**



**QUINTA DE FARO**  
PRIVATE LUXURY VILLAS  
ALGARVE



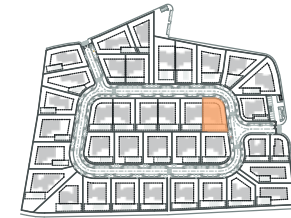
**BASEMENT**

Kitchen equipment is not contractual. Their position is indicative. Dimensions and areas are given subject to technical construction and execution requirements.  
The fallout from false ceilings, soffits and pipes are not systematically shown.  
The thickness of the insulation will be determined by the technical execution study and therefore the data in this plan are only indicative.

## SALES PLAN

VILLA N°33 DOUBLE STOREY

BASEMENT



**TOTAL INTERIOR LIVING AREA 347.5 m<sup>2</sup>**

**GROUND FLOOR 165.3 m<sup>2</sup>**

Living	40.9 m <sup>2</sup>
Dining room	17.2 m <sup>2</sup>
Kitchen	14.4 m <sup>2</sup>
Office	6.2 m <sup>2</sup>
Storeroom Pantry	5.1 m <sup>2</sup>
Ensuite Bedroom 1	20.5 m <sup>2</sup>
Bedroom 1 Dressing	2.8 m <sup>2</sup>
Ensuite Bedroom 2	26.7 m <sup>2</sup>
Bedroom 2 Dressing	4.4 m <sup>2</sup>
Ensuite Bedroom 3	19.7 m <sup>2</sup>
Guest toilet	1.9 m <sup>2</sup>
Hallway	5.5 m <sup>2</sup>

**BASEMENT 182.2 m<sup>2</sup>**

Ensuite Bedroom 4	20.5 m <sup>2</sup>
Hallway	17.1 m <sup>2</sup>
Laundry	9.5 m <sup>2</sup>
Gym, Hammam	36.9 m <sup>2</sup>
Wine Cellar	12.9 m <sup>2</sup>
Garage	74.8 m <sup>2</sup>
Technical room swim Pool	10.5 m <sup>2</sup>

**TOTAL EXTERIOR AREA 147.1 m<sup>2</sup>**

Patio/Fountain	22.7 m <sup>2</sup>
Covered terrace	24.6 m <sup>2</sup>
Pool Deck	50.7 m <sup>2</sup>
Swimming pool	49.1 m <sup>2</sup>

**TOTAL AREA 494.6 m<sup>2</sup>**

Plot of Land	795.5 m <sup>2</sup>
Altimetry	15

MJ Développement  
55 Avenue d'Espagne  
64600 ANGLÈT - FRANCE  
Tel: +33 5 59 03 13 00

**MJ DÉVELOPPEMENT**  
PROMOTEUR CONSTRUCTEUR

Serip Groupe  
2, avenue de la Liberté  
83120 Sainte-Maxime - FRANCE

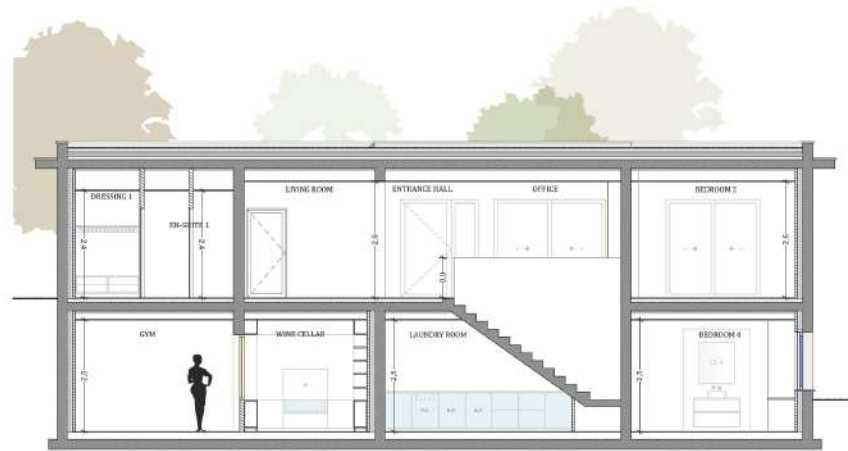
  
**SERIP GROUPE**



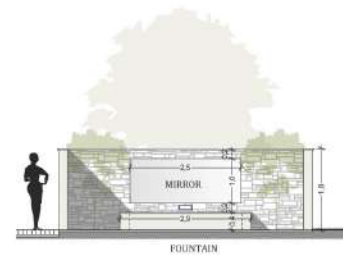
**QUINTA DE FARO**  
PRIVATE LUXURY VILLAS  
ALGARVE



SECTION AA'



SECTION BB'



PATIO

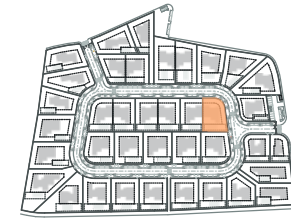
REQUERENTE	Paraisos Heroicos, Lda.
LOCALIZAÇÃO	Lugar <small>Fr</small> Marchil - Montenegro <small>Mo</small>
DESIGNAÇÃO	Cortes
	Coordenador <small>Aut</small>

Kitchen equipment is not contractual. Their position is indicative. Dimensions and areas are given subject to technical construction and execution requirements.  
The fallout from false ceilings, soffits and pipes are not systematically shown.  
The thickness of the insulation will be determined by the technical execution study and therefore the data in this plan are only indicative.

## SALES PLAN

VILLA N°33 DOUBLE STOREY

SECTIONAL PLAN



**TOTAL INTERIOR LIVING AREA 347.5 m<sup>2</sup>**

**GROUND FLOOR 165.3 m<sup>2</sup>**

Living	40.9 m <sup>2</sup>
Dining room	17.2 m <sup>2</sup>
Kitchen	14.4 m <sup>2</sup>
Office	6.2 m <sup>2</sup>
Storeroom Pantry	5.1 m <sup>2</sup>
Ensuite Bedroom 1	20.5 m <sup>2</sup>
Bedroom 1 Dressing	2.8 m <sup>2</sup>
Ensuite Bedroom 2	26.7 m <sup>2</sup>
Bedroom 2 Dressing	4.4 m <sup>2</sup>
Ensuite Bedroom 3	19.7 m <sup>2</sup>
Guest toilet	1.9 m <sup>2</sup>
Hallway	5.5 m <sup>2</sup>

**BASEMENT 182.2 m<sup>2</sup>**

Ensuite Bedroom 4	20.5 m <sup>2</sup>
Hallway	17.1 m <sup>2</sup>
Laundry	9.5 m <sup>2</sup>
Gym, Hammam	36.9 m <sup>2</sup>
Wine Cellar	12.9 m <sup>2</sup>
Garage	74.8 m <sup>2</sup>
Technical room swim Pool	10.5 m <sup>2</sup>

**TOTAL EXTERIOR AREA 147.1 m<sup>2</sup>**

Patio/Fountain	22.7 m <sup>2</sup>
Covered terrace	24.6 m <sup>2</sup>
Pool Deck	50.7 m <sup>2</sup>
Swimming pool	49.1 m <sup>2</sup>

**TOTAL AREA 494.6 m<sup>2</sup>**

Plot of Land	795.5 m <sup>2</sup>
Altimetry	15

MJ Développement  
55 Avenue d'Espagne  
64600 ANGLÈT - FRANCE  
Tel: +33 5 59 03 13 00

**MJ** DÉVELOPPEMENT  
PROMOTEUR CONSTRUCTEUR

Serip Groupe  
2, avenue de la Liberté  
83120 Sainte-Maxime - FRANCE

  
**SERIP GROUPE**



**QUINTA DE FARO**  
PRIVATE LUXURY VILLAS  
ALGARVE



NORTH



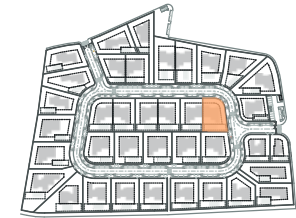
EAST

Kitchen equipment is not contractual. Their position is indicative. Dimensions and areas are given subject to technical construction and execution requirements.  
The fallout from false ceilings, soffits and pipes are not systematically shown.  
The thickness of the insulation will be determined by the technical execution study and therefore the data in this plan are only indicative.

## SALES PLAN

VILLA N°33 DOUBLE STOREY

ELEVATIONS



**TOTAL INTERIOR LIVING AREA 347.5 m<sup>2</sup>**

**GROUND FLOOR 165.3 m<sup>2</sup>**

Living	40.9 m <sup>2</sup>
Dining room	17.2 m <sup>2</sup>
Kitchen	14.4 m <sup>2</sup>
Office	6.2 m <sup>2</sup>
Storeroom Pantry	5.1 m <sup>2</sup>
Ensuite Bedroom 1	20.5 m <sup>2</sup>
Bedroom 1 Dressing	2.8 m <sup>2</sup>
Ensuite Bedroom 2	26.7 m <sup>2</sup>
Bedroom 2 Dressing	4.4 m <sup>2</sup>
Ensuite Bedroom 3	19.7 m <sup>2</sup>
Guest toilet	1.9 m <sup>2</sup>
Hallway	5.5 m <sup>2</sup>

**BASEMENT 182.2 m<sup>2</sup>**

Ensuite Bedroom 4	20.5 m <sup>2</sup>
Hallway	17.1 m <sup>2</sup>
Laundry	9.5 m <sup>2</sup>
Gym, Hammam	36.9 m <sup>2</sup>
Wine Cellar	12.9 m <sup>2</sup>
Garage	74.8 m <sup>2</sup>
Technical room swim Pool	10.5 m <sup>2</sup>

**TOTAL EXTERIOR AREA 147.1 m<sup>2</sup>**

Patio/Fountain	22.7 m <sup>2</sup>
Covered terrace	24.6 m <sup>2</sup>
Pool Deck	50.7 m <sup>2</sup>
Swimming pool	49.1 m <sup>2</sup>

**TOTAL AREA 494.6 m<sup>2</sup>**

Plot of Land	795.5 m <sup>2</sup>
Altimetry	15

MJ Développement  
55 Avenue d'Espagne  
64600 ANGLÈT - FRANCE  
Tel: +33 5 59 03 13 00

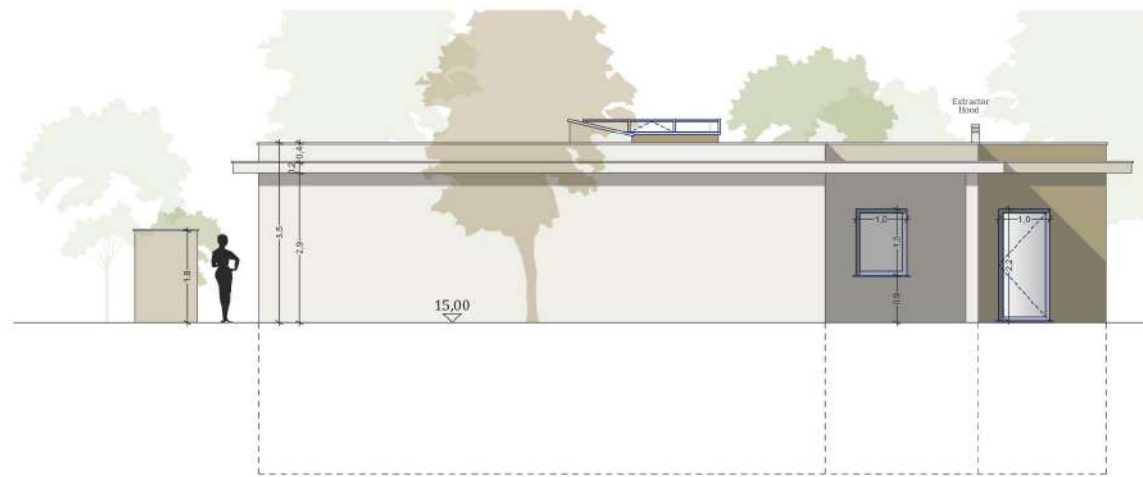
**MJ** DÉVELOPPEMENT  
PROMOTEUR CONSTRUCTEUR

Serip Groupe  
2, avenue de la Liberté  
83120 Sainte-Maxime - FRANCE

  
**SERIP GROUPE**



**QUINTA DE FARO**  
PRIVATE LUXURY VILLAS  
ALGARVE



SOUTH



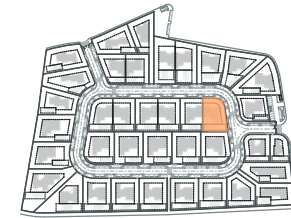
WEST

Kitchen equipment is not contractual. Their position is indicative. Dimensions and areas are given subject to technical construction and execution requirements. The fallout from false ceilings, soffits and pipes are not systematically shown. The thickness of the insulation will be determined by the technical execution study and therefore the data in this plan are only indicative.

## SALES PLAN

VILLA N°33 DOUBLE STOREY

ELEVATIONS



**TOTAL INTERIOR LIVING AREA 347.5 m<sup>2</sup>**

**GROUND FLOOR 165.3 m<sup>2</sup>**

Living	40.9 m <sup>2</sup>
Dining room	17.2 m <sup>2</sup>
Kitchen	14.4 m <sup>2</sup>
Office	6.2 m <sup>2</sup>
Storeroom Pantry	5.1 m <sup>2</sup>
Ensuite Bedroom 1	20.5 m <sup>2</sup>
Bedroom 1 Dressing	2.8 m <sup>2</sup>
Ensuite Bedroom 2	26.7 m <sup>2</sup>
Bedroom 2 Dressing	4.4 m <sup>2</sup>
Ensuite Bedroom 3	19.7 m <sup>2</sup>
Guest toilet	1.9 m <sup>2</sup>
Hallway	5.5 m <sup>2</sup>

**BASEMENT 182.2 m<sup>2</sup>**

Ensuite Bedroom 4	20.5 m <sup>2</sup>
Hallway	17.1 m <sup>2</sup>
Laundry	9.5 m <sup>2</sup>
Gym, Hammam	36.9 m <sup>2</sup>
Wine Cellar	12.9 m <sup>2</sup>
Garage	74.8 m <sup>2</sup>
Technical room swim Pool	10.5 m <sup>2</sup>

**TOTAL EXTERIOR AREA 147.1 m<sup>2</sup>**

Patio/Fountain	22.7 m <sup>2</sup>
Covered terrace	24.6 m <sup>2</sup>
Pool Deck	50.7 m <sup>2</sup>
Swimming pool	49.1 m <sup>2</sup>

**TOTAL AREA 494.6 m<sup>2</sup>**

Plot of Land	795.5 m <sup>2</sup>
Altimetry	15

MJ Développement  
55 Avenue d'Espagne  
64600 ANGLÈT - FRANCE  
Tel: +33 5 59 03 13 00

**MJ** DÉVELOPPEMENT  
PROMOTEUR CONSTRUCTEUR

Serip Groupe  
2, avenue de la Liberté  
83120 Sainte-Maxime - FRANCE

  
**SERIP GROUPE**