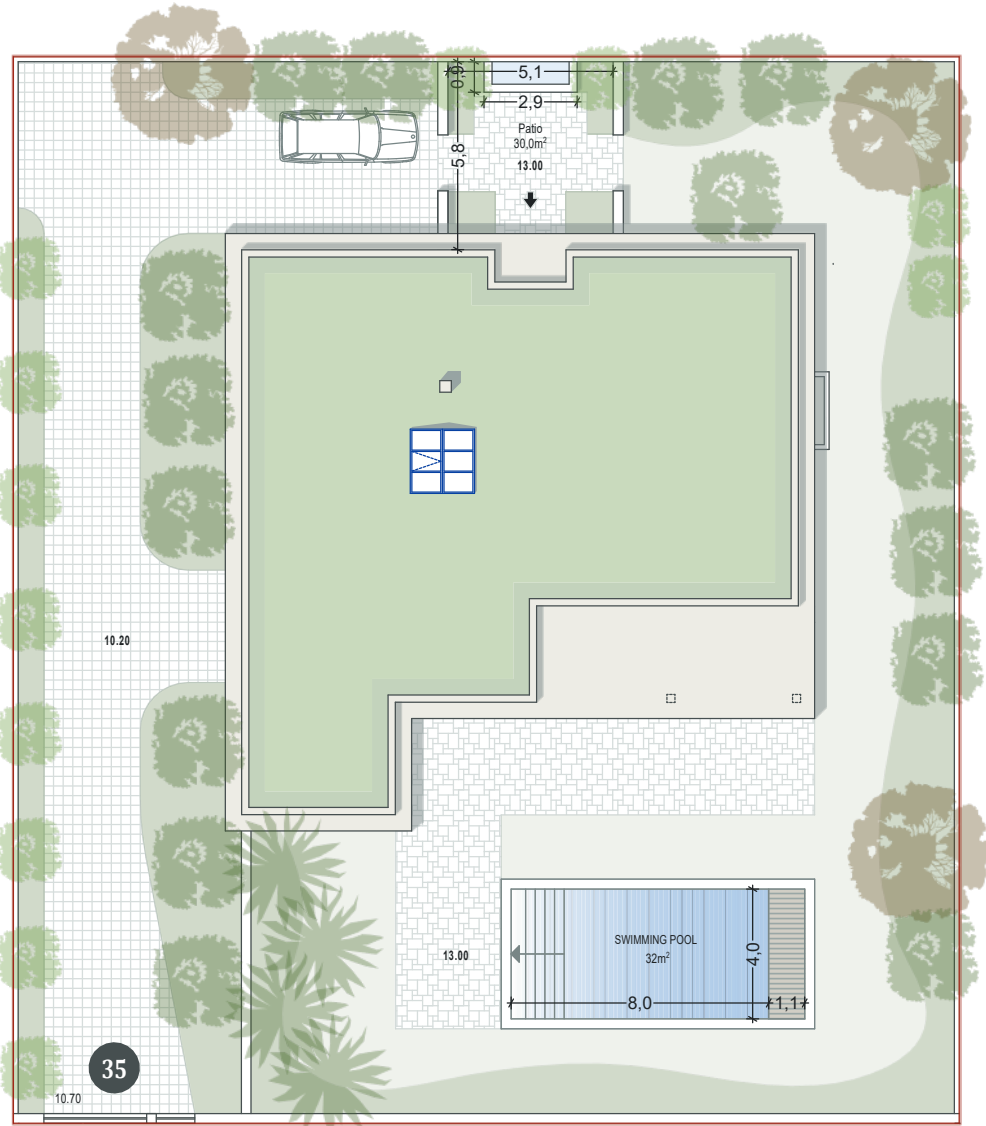




QUINTA DE FARO
PRIVATE LUXURY VILLAS
ALGARVE



SALES PLAN	
VILLA N°35 DOUBLE STOREY	SITE PLAN
TOTAL INTERIOR LIVING AREA	416,8 m²
GROUND FLOOR	196,6 m²
Living	33,7 m ²
Dining room	19,6 m ²
Kitchen	15,6 m ²
Storeroom	6,5 m ²
Ensuite Bedroom 1	24,2 m ²
Ensuite Bedroom 2	30,3 m ²
Winter store Ensuite Bedroom 2	6,5 m ²
Ensuite Bedroom 3	22,6 m ²
Ensuite Bedroom 4	21,8 m ²
Guest toilet	5,7 m ²
Lobby, Hallway	10,1 m ²
BASEMENT	220,2 m²
Ensuite Bedroom 5	32,6 m ²
Winter store Ensuite Bedroom 5	5,5 m ²
Hallway	22 m ²
Corridor	4 m ²
Laundry	10,8 m ²
Gym, Hammam	31,9 m ²
Wine Cellar	14,5 m ²
Garage	84,8 m ²
Technical room swim Pool	14,1 m ²
TOTAL EXTERIOR AREA	155,4 m²
Patio/Fountain	30 m ²
Covered terrace	24,3 m ²
Pool Deck	69,1 m ²
Swimming pool	32 m ²
TOTAL AREA	572,2 m²
Plot of Land	977,4 m ²
Altimetry	13

Kitchen equipment is not contractual. Their position is indicative. Dimensions and areas are given subject to technical construction and execution requirements. The fallout from false ceilings, soffits and pipes are not systematically shown. The thickness of the insulation will be determined by the technical execution study and therefore the data in this plan are only indicative.

Co-Developer :

MJ Développement
55 Avenue d'Espagne
64600 ANGLÈT - FRANCE
Tel: +33 5 59 03 13 00

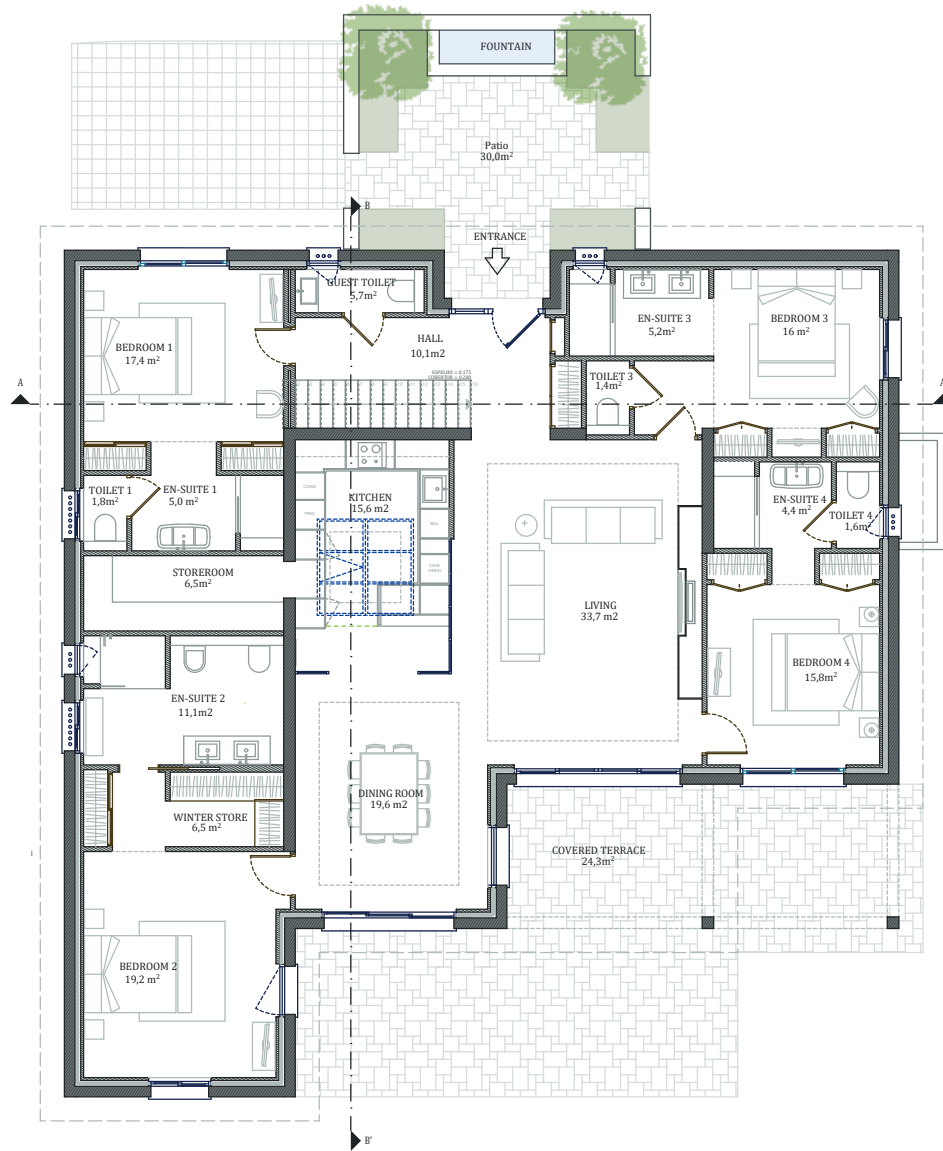
MJ DÉVELOPPEMENT
PROMOTEUR CONSTRUCTEUR

Serip Groupe
2, avenue de la Liberté
83120 Sainte-Maxime - FRANCE

SERIP GROUPE



QUINTA DE FARO
PRIVATE LUXURY VILLAS
ALGARVE



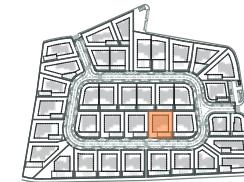
Ladder
1/100

Kitchen equipment is not contractual. Their position is indicative. Dimensions and areas are given subject to technical construction and execution requirements. The fallout from false ceilings, soffits and pipes are not systematically shown. The thickness of the insulation will be determined by the technical execution study and therefore the data in this plan are only indicative.

SALES PLAN

VILLA N°35 DOUBLE STOREY

GROUND FLOOR



TOTAL INTERIOR LIVING AREA 416,8 m²

GROUND FLOOR 196,6 m²

Living	33,7 m ²
Dining room	19,6 m ²
Kitchen	15,6 m ²
Storeroom	6,5 m ²
Ensuite Bedroom 1	24,2 m ²
Ensuite Bedroom 2	30,3 m ²
Winter store Ensuite Bedroom 2	6,5 m ²
Ensuite Bedroom 3	22,6 m ²
Ensuite Bedroom 4	21,8 m ²
Guest toilet	5,7 m ²
Lobby, Hallway	10,1 m ²

BASEMENT 220,2 m²

Ensuite Bedroom 5	32,6 m ²
Winter store Ensuite Bedroom 5	5,5 m ²
Hallway	22 m ²
Corridor	4 m ²
Laundry	10,8 m ²
Gym, Hammam	31,9 m ²
Wine Cellar	14,5 m ²
Garage	84,8 m ²
Technical room swim Pool	14,1 m ²

TOTAL EXTERIOR AREA 155,4 m²

Patio/Fountain	30 m ²
Covered terrace	24,3 m ²
Pool Deck	69,1 m ²
Swimming pool	32 m ²

TOTAL AREA 572,2 m²

Plot of Land	977,4 m ²
Altimetry	13

Co-Developer :

MJ Développement
55 Avenue d'Espagne
64600 ANGLÈT - FRANCE
Tel: +33 5 59 03 13 00

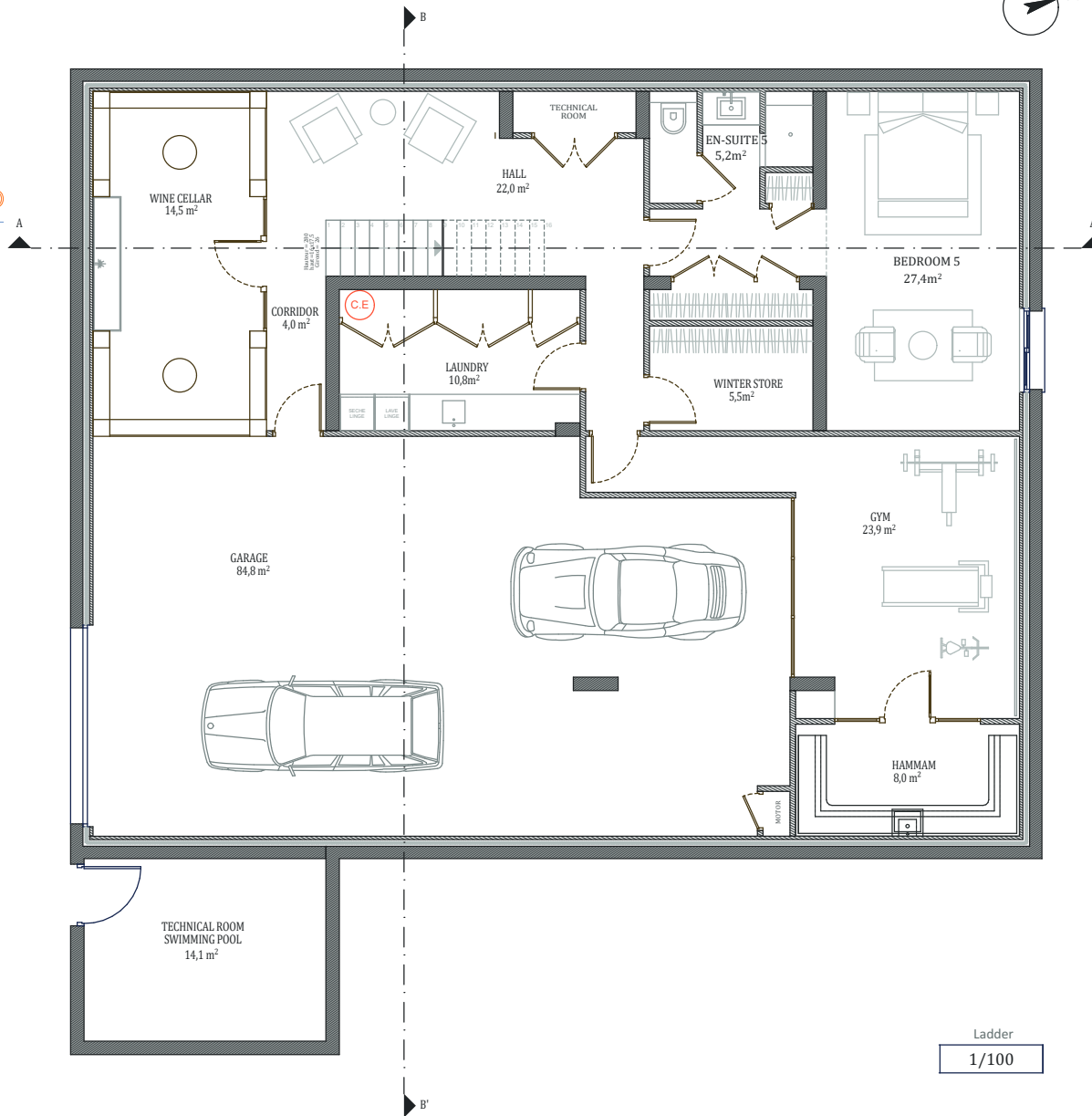
MJ DÉVELOPPEMENT
PROMOTEUR CONSTRUCTEUR

Serip Groupe
2, avenue de la Liberté
83120 Sainte-Maxime - FRANCE


SERIP GROUPE



QUINTA DE FARO
PRIVATE LUXURY VILLAS
ALGARVE

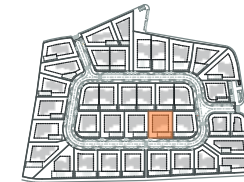


Kitchen equipment is not contractual. Their position is indicative. Dimensions and areas are given subject to technical construction and execution requirements. The fallout from false ceilings, soffits and pipes are not systematically shown. The thickness of the insulation will be determined by the technical execution study and therefore the data in this plan are only indicative.

SALES PLAN

VILLA N°35 DOUBLE STOREY

BASEMENT



TOTAL INTERIOR LIVING AREA 416,8 m²

GROUND FLOOR 196,6 m²

Living	33,7 m ²
Dining room	19,6 m ²
Kitchen	15,6 m ²
Storeroom	6,5 m ²
Ensuite Bedroom 1	24,2 m ²
Ensuite Bedroom 2	30,3 m ²
Winter store Ensuite Bedroom 2	6,5 m ²
Ensuite Bedroom 3	22,6 m ²
Ensuite Bedroom 4	21,8 m ²
Guest toilet	5,7 m ²
Lobby, Hallway	10,1 m ²

BASEMENT 220,2 m²

Ensuite Bedroom 5	32,6 m ²
Winter store Ensuite Bedroom 5	5,5 m ²
Hallway	22 m ²
Corridor	4 m ²
Laundry	10,8 m ²
Gym, Hammam	31,9 m ²
Wine Cellar	14,5 m ²
Garage	84,8 m ²
Technical room swim Pool	14,1 m ²

TOTAL EXTERIOR AREA 155,4 m²

Patio/Fountain	30 m ²
Covered terrace	24,3 m ²
Pool Deck	69,1 m ²
Swimming pool	32 m ²

TOTAL AREA 572,2 m²

Plot of Land	977,4 m ²
Altimetry	13

Co-Developer :

MJ Développement
55 Avenue d'Espagne
64600 ANGLÈT - FRANCE
Tel: +33 5 59 03 13 00

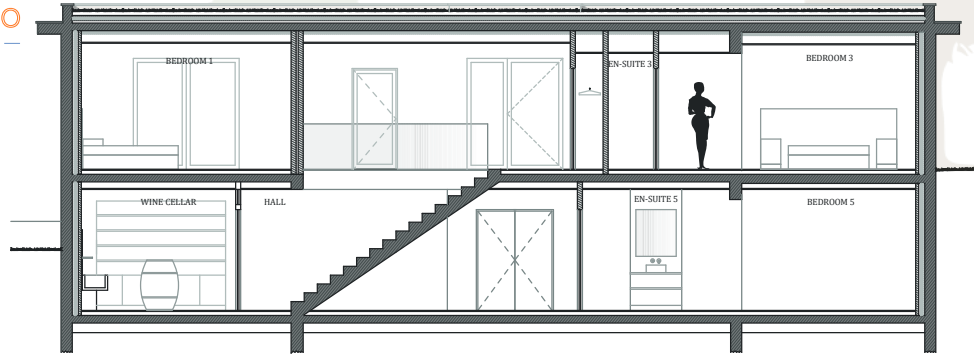
MJ DÉVELOPPEMENT
PROMOTEUR CONSTRUCTEUR

Serip Groupe
2, avenue de la Liberté
83120 Sainte-Maxime - FRANCE

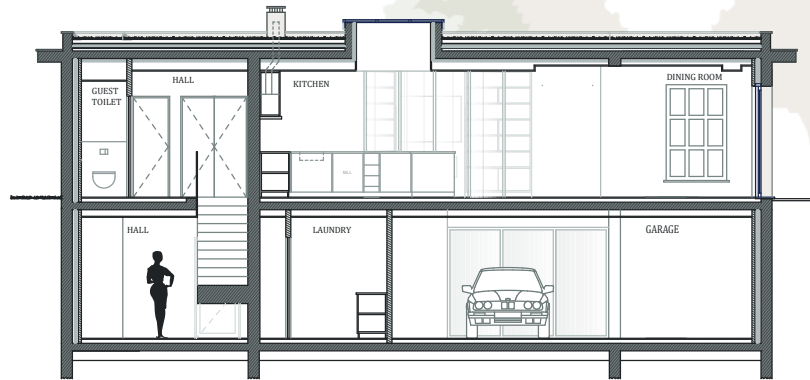

SERIP GROUPE



QUINTA DE FARO
PRIVATE LUXURY VILLAS
ALGARVE



SECTION AA'



SECTION BB'

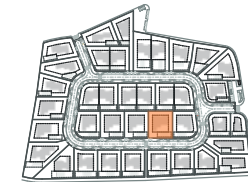
Kitchen equipment is not contractual. Their position is indicative. Dimensions and areas are given subject to technical construction and execution requirements. The fallout from false ceilings, soffits and pipes are not systematically shown. The thickness of the insulation will be determined by the technical execution study and therefore the data in this plan are only indicative.

Ladder
1/100

SALES PLAN

VILLA N°35 DOUBLE STOREY

SECTIONAL PLAN



TOTAL INTERIOR LIVING AREA 416,8 m²

GROUND FLOOR 196,6 m²

Living	33,7 m ²
Dining room	19,6 m ²
Kitchen	15,6 m ²
Storeroom	6,5 m ²
Ensuite Bedroom 1	24,2 m ²
Ensuite Bedroom 2	30,3 m ²
Winter store Ensuite Bedroom 2	6,5 m ²
Ensuite Bedroom 3	22,6 m ²
Ensuite Bedroom 4	21,8 m ²
Guest toilet	5,7 m ²
Lobby, Hallway	10,1 m ²

BASEMENT 220,2 m²

Ensuite Bedroom 5	32,6 m ²
Winter store Ensuite Bedroom 5	5,5 m ²
Hallway	22 m ²
Corridor	4 m ²
Laundry	10,8 m ²
Gym, Hammam	31,9 m ²
Wine Cellar	14,5 m ²
Garage	84,8 m ²
Technical room swim Pool	14,1 m ²

TOTAL EXTERIOR AREA 155,4 m²

Patio/Fountain	30 m ²
Covered terrace	24,3 m ²
Pool Deck	69,1 m ²
Swimming pool	32 m ²

TOTAL AREA 572,2 m²

Plot of Land	977,4 m ²
Altimetry	13

Co-Developer :

MJ Développement
55 Avenue d'Espagne
64600 ANGLÈT - FRANCE
Tel: +33 5 59 03 13 00

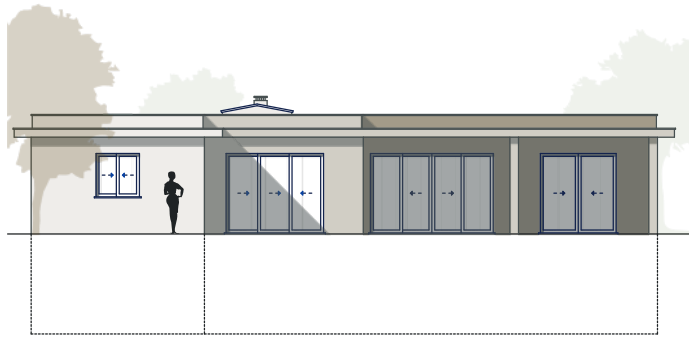
MJ DÉVELOPPEMENT
PROMOTEUR CONSTRUCTEUR

Serip Groupe
2, avenue de la Liberté
83120 Sainte-Maxime - FRANCE


SERIP GROUPE



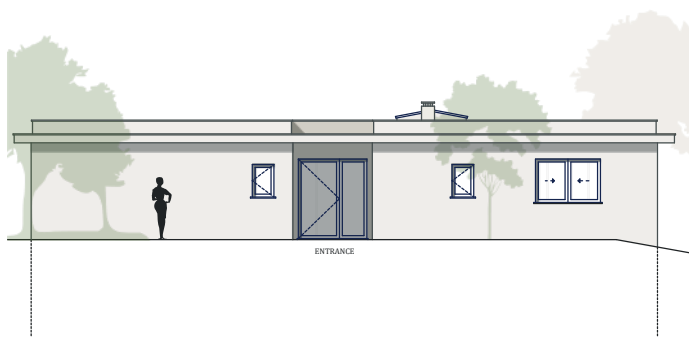
QUINTA DE FARO
— PRIVATE LUXURY VILLAS —
ALGARVE



EAST SIDE



SOUTH SIDE



WEST SIDE



NORTH SIDE

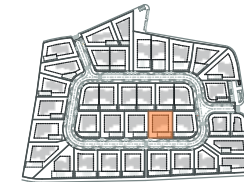
Ladder
1/100

Kitchen equipment is not contractual. Their position is indicative. Dimensions and areas are given subject to technical construction and execution requirements. The fallout from false ceilings, soffits and pipes are not systematically shown. The thickness of the insulation will be determined by the technical execution study and therefore the data in this plan are only indicative.

SALES PLAN

VILLA N°35 DOUBLE STOREY

ELEVATIONS



TOTAL INTERIOR LIVING AREA 416,8 m²

GROUND FLOOR 196,6 m²

Living	33,7 m ²
Dining room	19,6 m ²
Kitchen	15,6 m ²
Storeroom	6,5 m ²
Ensuite Bedroom 1	24,2 m ²
Ensuite Bedroom 2	30,3 m ²
Winter store Ensuite Bedroom 2	6,5 m ²
Ensuite Bedroom 3	22,6 m ²
Ensuite Bedroom 4	21,8 m ²
Guest toilet	5,7 m ²
Lobby, Hallway	10,1 m ²

BASEMENT 220,2 m²

Ensuite Bedroom 5	32,6 m ²
Winter store Ensuite Bedroom 5	5,5 m ²
Hallway	22 m ²
Corridor	4 m ²
Laundry	10,8 m ²
Gym, Hammam	31,9 m ²
Wine Cellar	14,5 m ²
Garage	84,8 m ²
Technical room swim Pool	14,1 m ²

TOTAL EXTERIOR AREA 155,4 m²

Patio/Fountain	30 m ²
Covered terrace	24,3 m ²
Pool Deck	69,1 m ²
Swimming pool	32 m ²

TOTAL AREA 572,2 m²

Plot of Land	977,4 m ²
Altimetry	13

Co-Developer :

MJ Développement
55 Avenue d'Espagne
64600 ANGLÈT - FRANCE
Tel: +33 5 59 03 13 00

MJ DÉVELOPPEMENT
PROMOTEUR CONSTRUCTEUR

Serip Groupe
2, avenue de la Liberté
83120 Sainte-Maxime - FRANCE


SERIP GROUPE