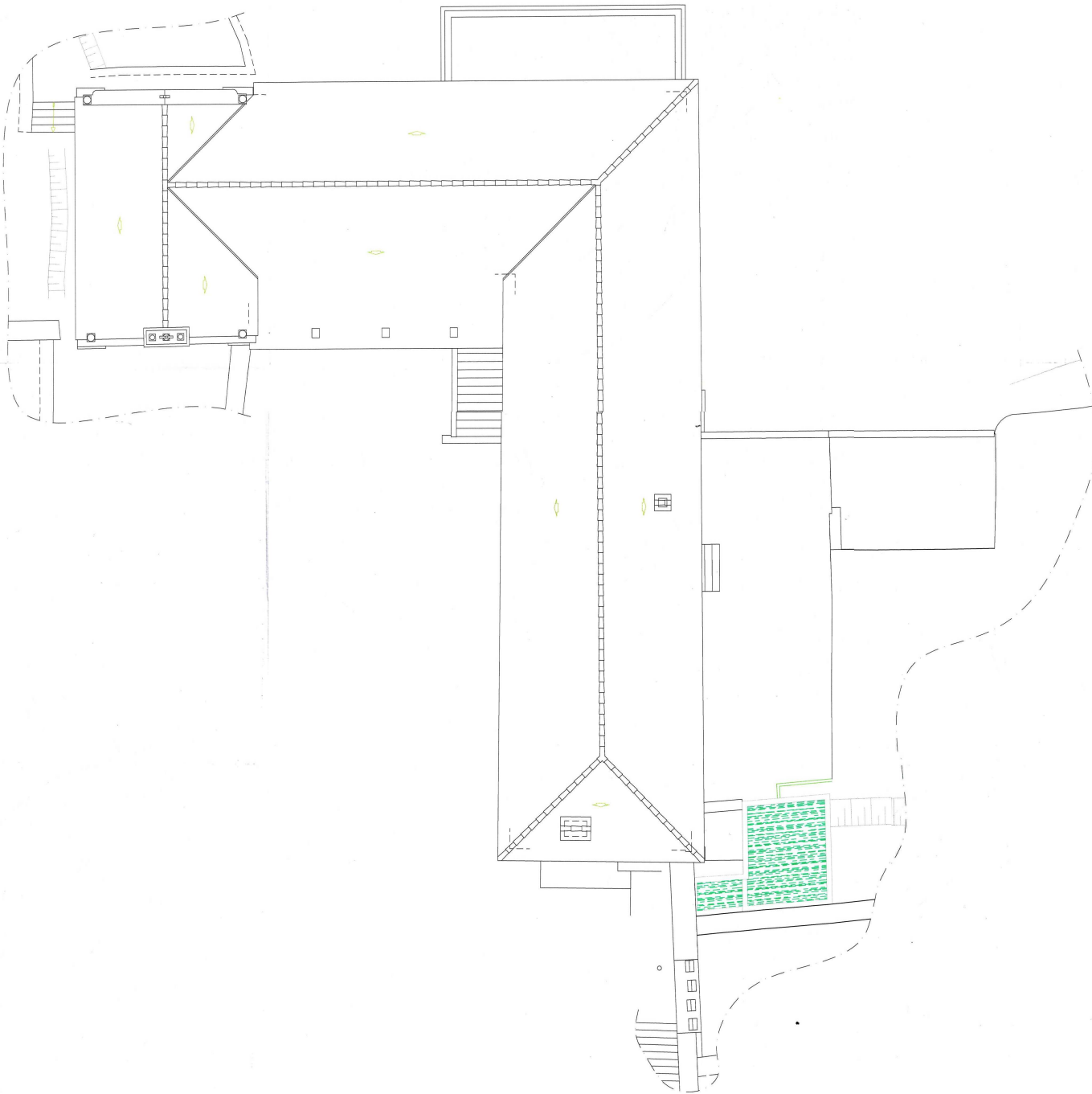
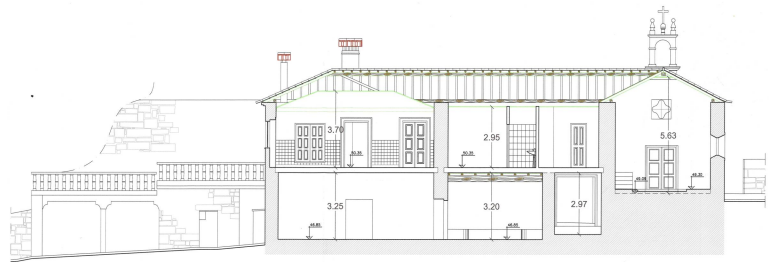


TOTAL CAPA = 327,65
 CASA AUX 1 = 80,50
 CASA AUX 2 = 95,00
 PATIO = 350

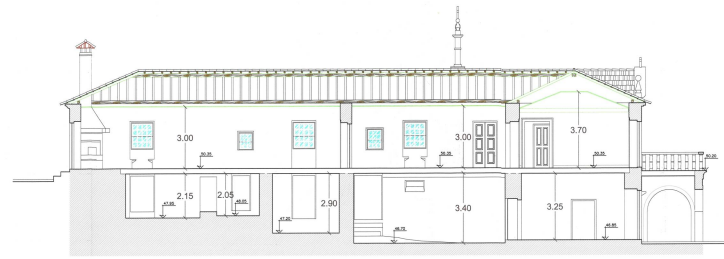
Patio @pedrado



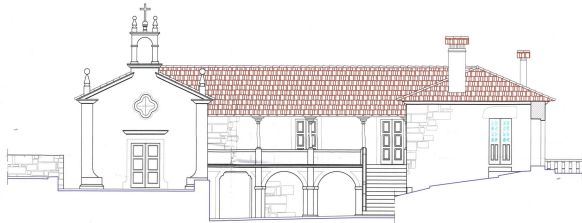




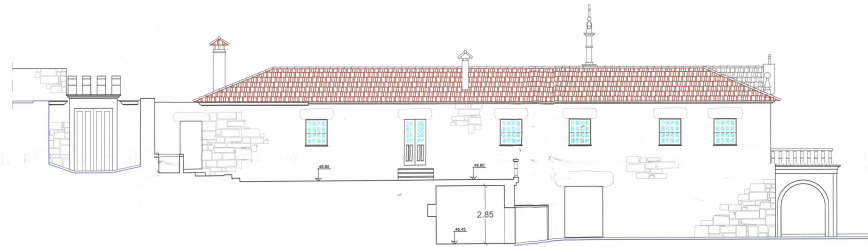
CORTE A:A



CORTE B:B



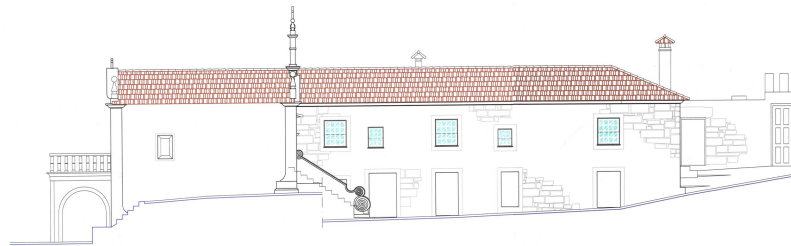
PRINCIPAL



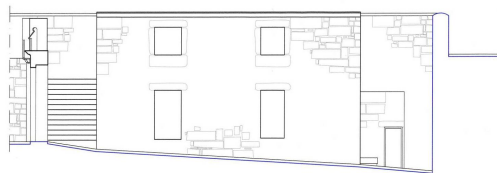
LAT. DEREITO



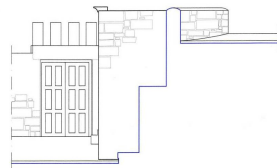
POSTERIOR



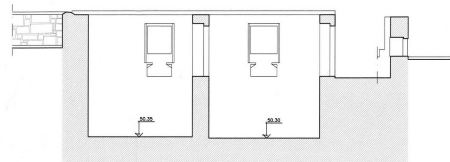
LAT. ESQUERDO



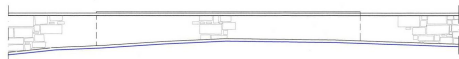
PRINCIPAL



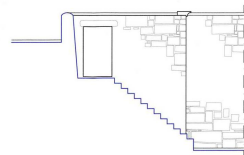
LAT. DIREITO



CORTE A:A



POSTERIOR



LAT. ESQUERDO



CORTE B:B