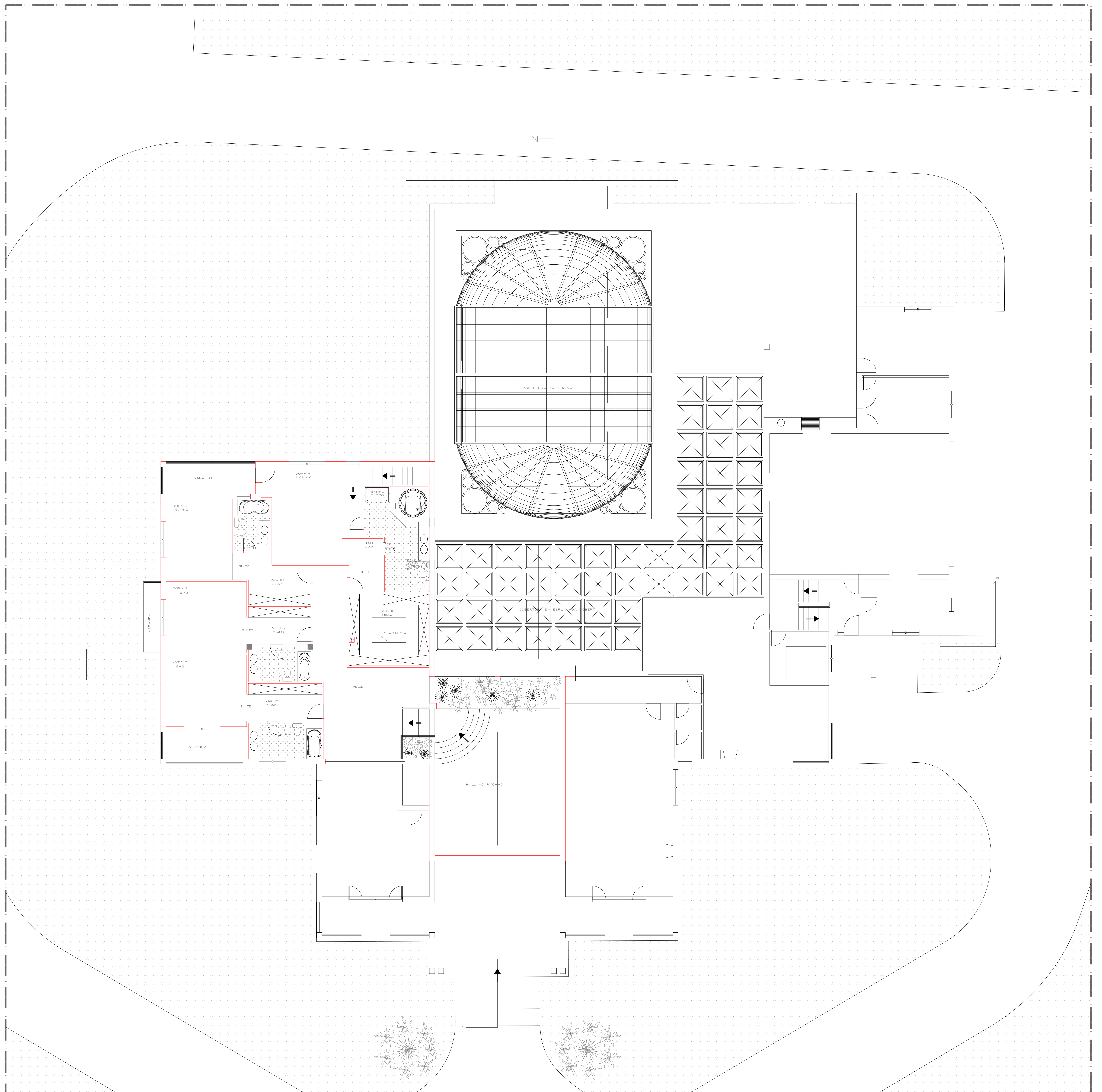


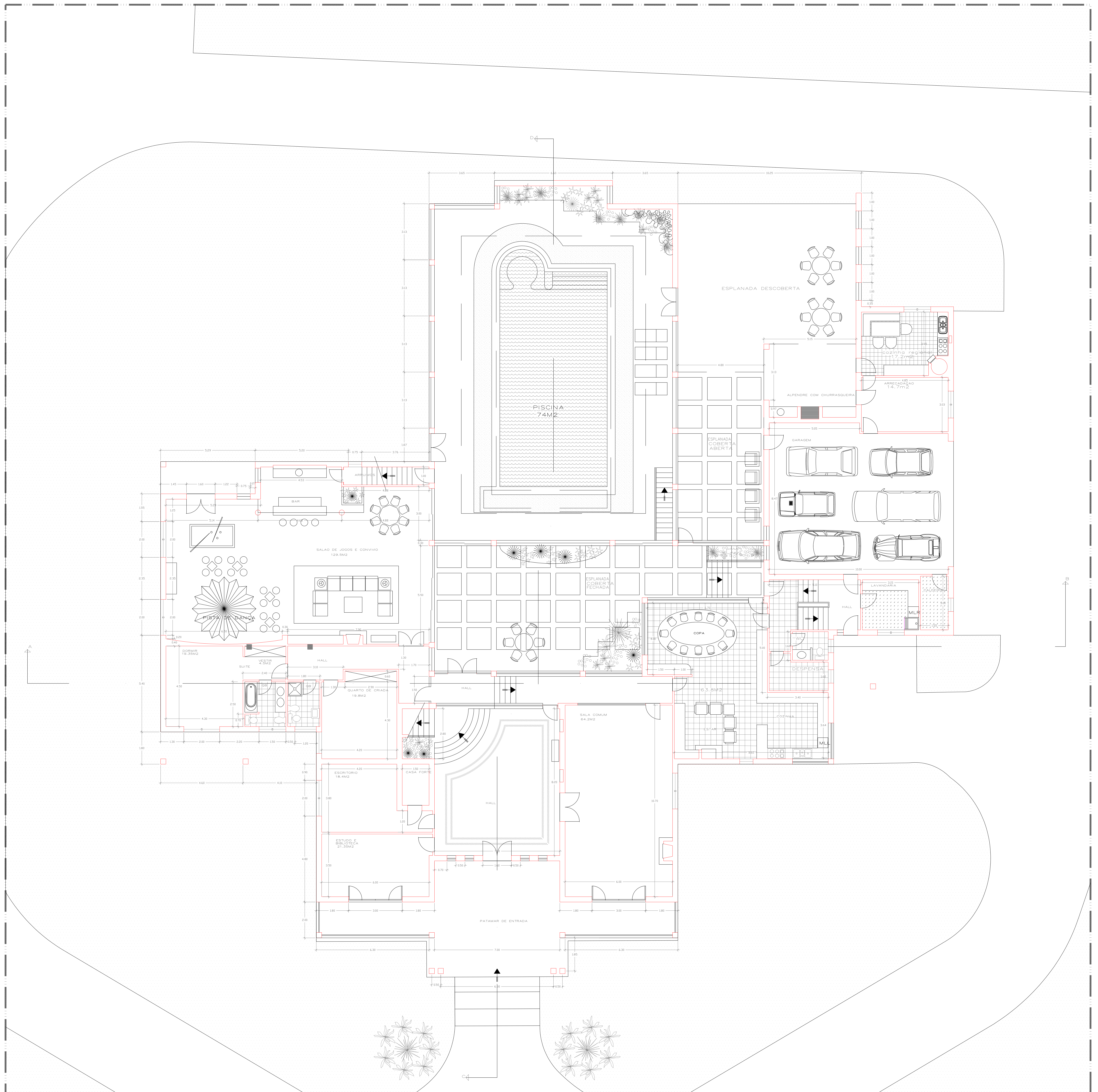
Area bruta (gross area): 118,00 m2 (sqm)
Superfície dos pavimentos (floor surface): 103,50 m2 (sqm)
Area util (useful area): 98,90 m2 (sqm)

BASEMENT PLAN



Area bruta (gross area): 257,00 m2 (sqm)
Superfície dos pavimentos (floor surface): 220,00 m2 (sqm)
Area util (useful area): 213,00 m2 (sqm)

FLOOR PLAN



Area bruta (gross area): 1.064,00 m2 (sqm)

Superfície dos pavimentos (floor surface): 1.025,00 m2 (sqm)

Area util (useful area): 958,90 m2 (sqm)

Habitacao (Housing): 605,50 m2 (sqm) + Esplanada Coberta (Covered Terrace): 100,90 m2 (sqm) + Piscina (Pool): 252,50 m2 (sqm)

GROUND FLOOR PLAN